

TOPHAM STREET, LONDON, EC1R
£650,000 LEASEHOLD

**A BRIGHT AND EXCEPTIONALLY WELL POSITIONED TWO BEDROOM
APARTMENT SITUATED ON THE TOP FLOOR OF A PERIOD CONVERSION
IN THE CENTRE OF CLERKENWELL.**

Clerkenwell | 020 7405 1288 | clerkenwell@winkworth.co.uk

Winkworth

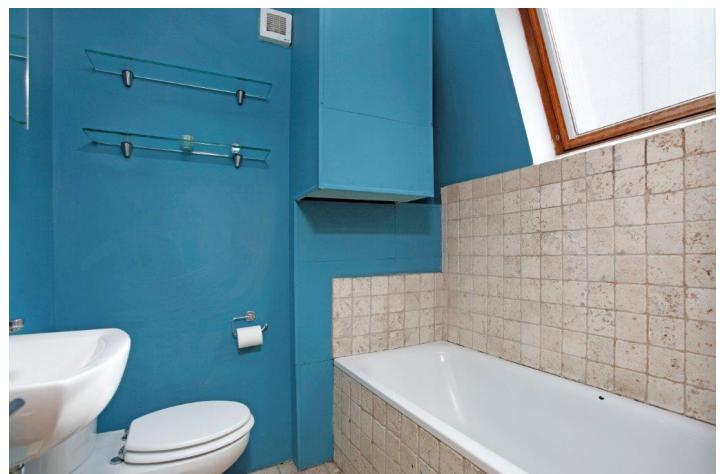
for every step...

winkworth.co.uk



DESCRIPTION:

Topham Street is located on a quiet street in the heart of Clerkenwell, close to Exmouth Market. Due to its strategic location it is within easy reach of the City, Islington, the West End and St Pancras international. Farringdon mainline and underground station is a short walk away.



Winkworth

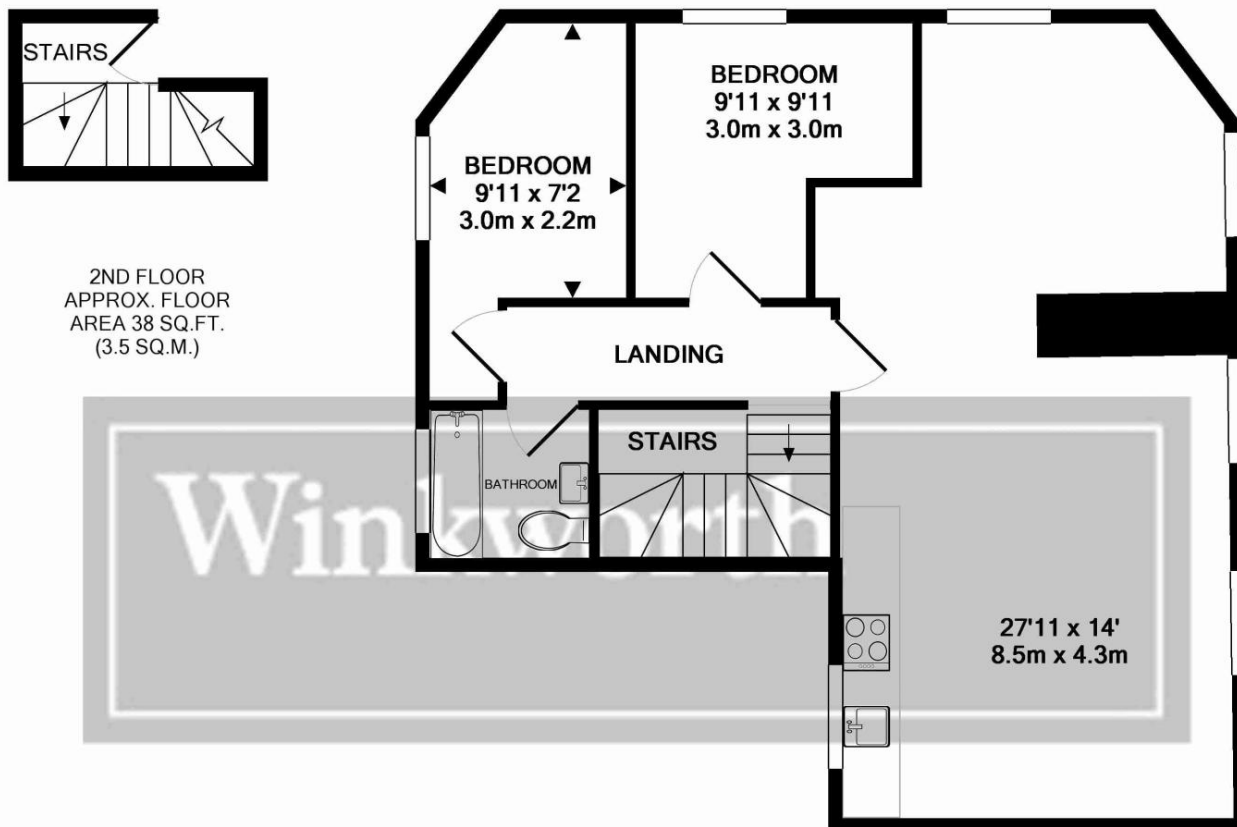
for every step...



Winkworth

for every step...

winkworth.co.uk

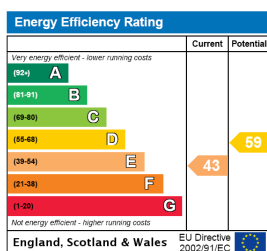


3RD FLOOR
APPROX. FLOOR
AREA 630 SQ.FT.
(58.5 SQ.M.)

TOPHAM STREET, LONDON, EC1R
TOTAL APPROX. FLOOR AREA 667 SQ.FT. (62.0 SQ.M.)

Whilst every attempt has been made to ensure the accuracy of the floor plan contained here, measurements of doors, windows, rooms and any other items are approximate and no responsibility is taken for any error, omission, or mis-statement. This plan is for illustrative purposes only and should be used as such by any prospective purchaser. The services, systems and appliances shown have not been tested and no guarantee as to their operability or efficiency can be given
Made with Metropix ©2014

This floorplan is for illustration purposes only and is not to scale. The position and size of doors, windows, appliances and other features are approximate.



Winkworth

Clerkenwell | 020 7405 1288 | clerkenwell@winkworth.co.uk

for every step...

winkworth.co.uk

Winkworth wishes to inform prospective buyers and tenants that these particulars are a guide and act as information only. All our details are given in good faith and believed to be correct at the time of printing but they don't form part of an offer or contract. No Winkworth employee has authority to make or give any representation or warranty in relation to this property. All fixtures and fittings, whether fitted or not are deemed removable by the vendor unless stated otherwise and room sizes are measured between internal wall surfaces, including furnishings.