



THE CHASE, UK, SW4  
**£650,000 LEASEHOLD**

**STYLISH TOP-FLOOR VICTORIAN CONVERSION  
 WITH ROOF TERRACE AND LONG LEASE.**

Clapham | 0207 871 2777

**Winkworth**

for every step...

*winkworth.co.uk*





## DESCRIPTION:

Set on the top floor of an attractive Victorian building on one of Clapham's most desirable streets, this beautifully refurbished two-bedroom flat offers a stylish and low-maintenance home ready for immediate occupation.

The property has been thoughtfully overhauled throughout to create a turnkey living experience, combining period charm with modern finishes. The open-plan kitchen and living area is filled with natural light and provides a great space for relaxing or entertaining. Both bedrooms are well-proportioned, and the contemporary bathroom is finished to a high standard.

## AT A GLANCE

- Top-floor Victorian conversion
- Two bright bedrooms
- Stylish open-plan living
- Access to roof terrace
- Recently refurbished
- Long lease

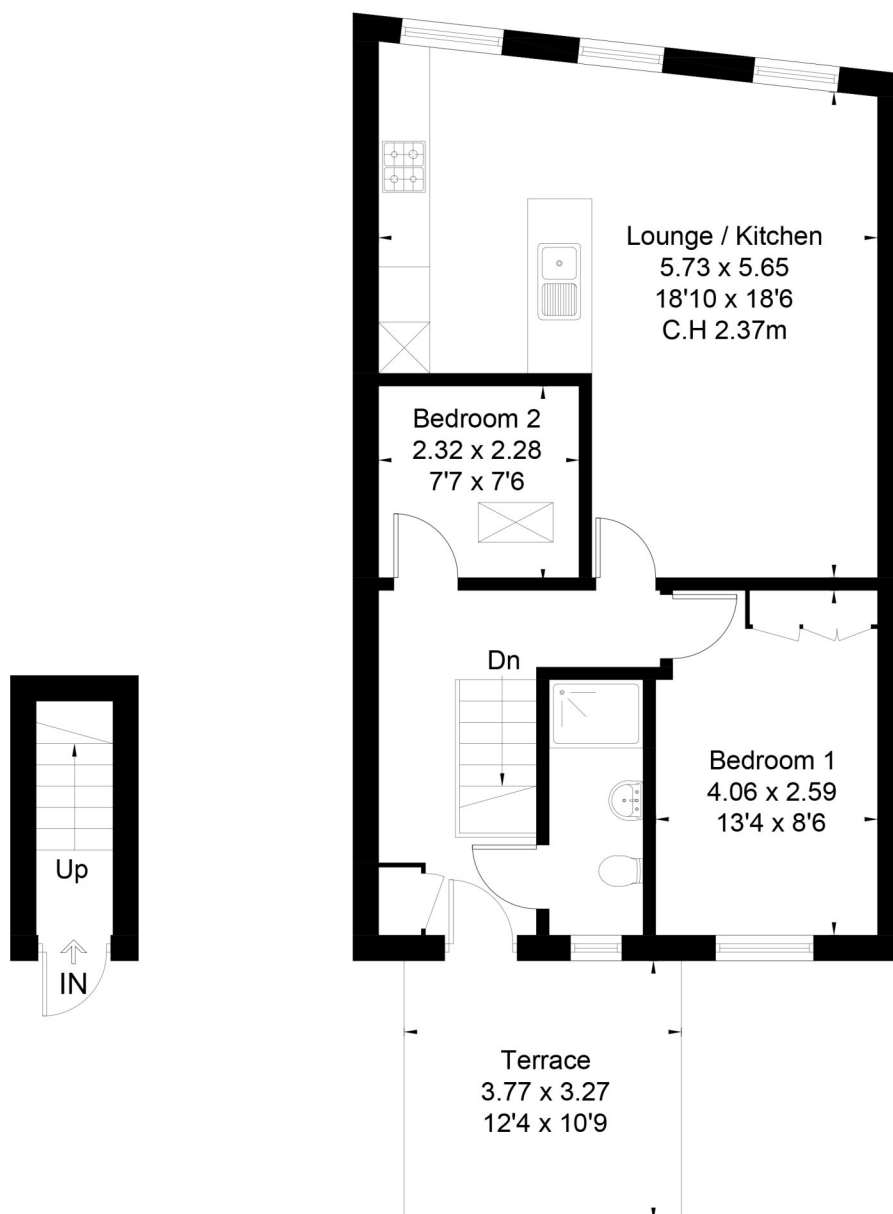






# THE CHASE, SW4

Approximate Floor Area = 62.2 sq m / 669 sq ft



## Ground Floor First Floor



This floor plan has been drawn in accordance with RICS Property Measurement 2nd edition. All measurements, including the floor area, are approximate and for illustrative purposes only @djd.london #90404

This floorplan is for illustration purposes only and is not to scale. The position and size of doors, windows, appliances and other features are approximate.

Score	Energy rating	Current	Potential
92+	A		
81-91	B		
69-80	C		
55-68	D	56 D	68 D
39-54	E		
21-38	F		
1-20	G		

**Tenure:** Leasehold

**Term:** 0 year and 0 months

**Service Charge:** £0 per annum

**Ground Rent:** £ 0 Annually (subject to increase)

**Council Tax Band:**

Where no figures are shown, we have been unable to ascertain the information. All figures that are shown were correct at the time of printing.

Clapham | |

**Winkworth**

for every step...

[winkworth.co.uk](http://winkworth.co.uk)

Winkworth wishes to inform prospective buyers and tenants that these particulars are a guide and act as information only. All our details are given in good faith and believed to be correct at the time of printing but they don't form part of an offer or contract. No Winkworth employee has authority to make or give any representation or warranty in relation to this property. All fixtures and fittings, whether fitted or not are deemed removable by the vendor unless stated otherwise and room sizes are measured between internal wall surfaces, including furnishings.