

**ABERCORN ROAD, NW7**  
**£900,000 FREEHOLD**

## A THREE BEDROOM, SEMI DETACHED, BUNGALOW - WITH SEPARATE SELF CONTAINED 2 BEDROOM FLAT

Finchley | 020 8349 3388 | [finchley@winkworth.co.uk](mailto:finchley@winkworth.co.uk)

**Winkworth**

for every step...

[winkworth.co.uk](http://winkworth.co.uk)





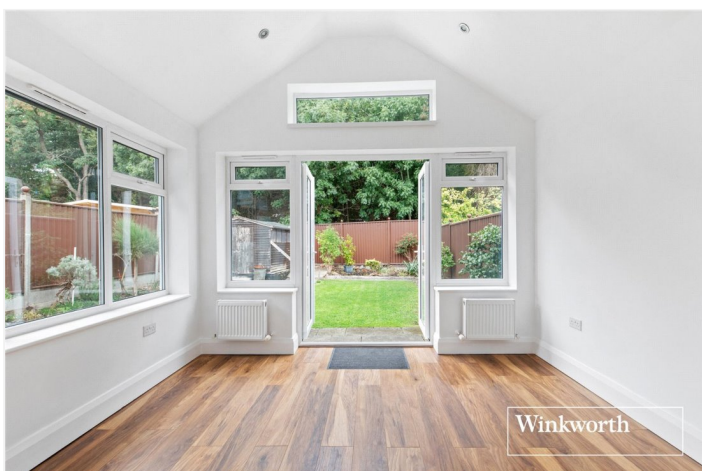
## DESCRIPTION:

Offered for sale is this, chain free, semi-detached bungalow with a separate, two bedroom, self-contained flat - presented in good decorative order, which can also be used as extra living quarters. The property benefits further from having off street parking for several cars, and is situated within 0.3 miles to Mill Hill East tube station and shopping facilities.

A viewing is highly recommended!

## AT A GLANCE

- Bungalow
- Separate two bedroom flat
- Off street parking
- Mill Hill East tube
- Chain free





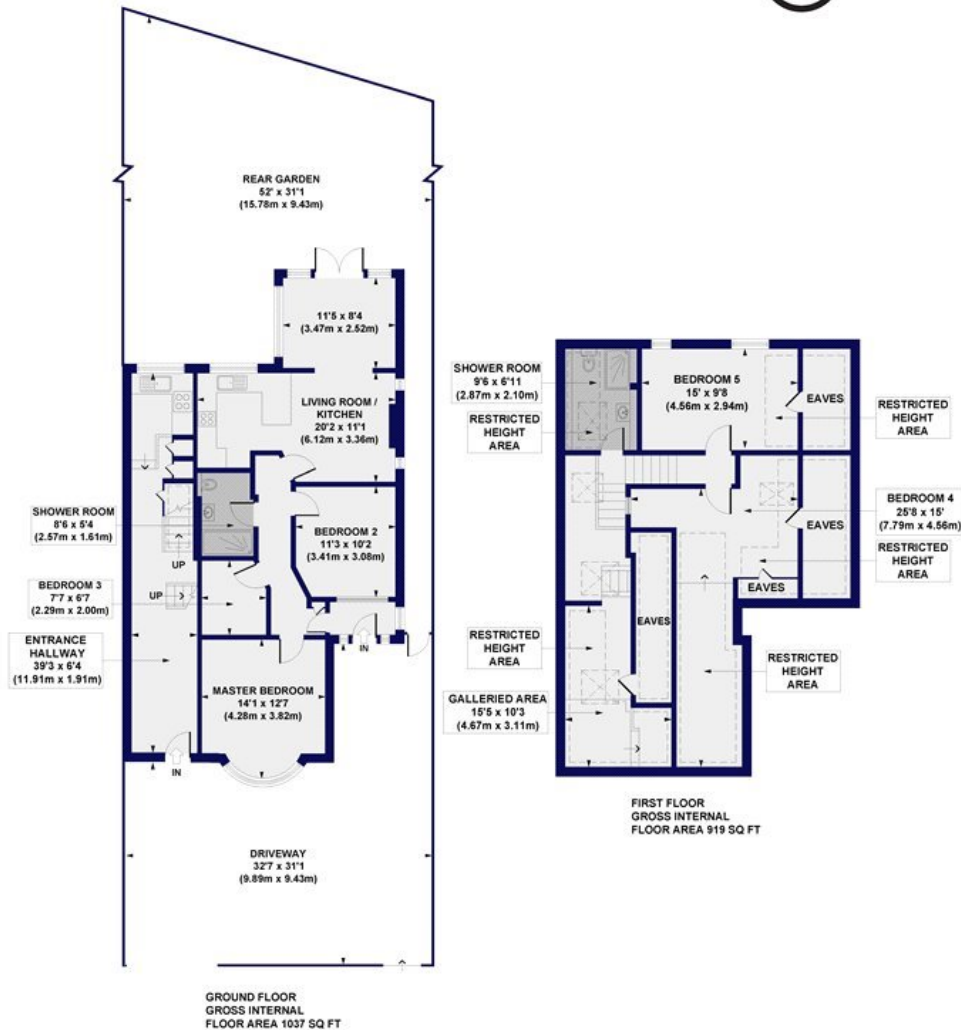




## Abercorn Road, NW7

Approx. Gross Internal Floor Area 1956 sq. ft / 181.69 sq. m (Including Restricted Height Area & Eaves)

Approx. Gross Internal Floor Area 1396 sq. ft / 129.68 sq. m (Excluding Restricted Height Area & Eaves)

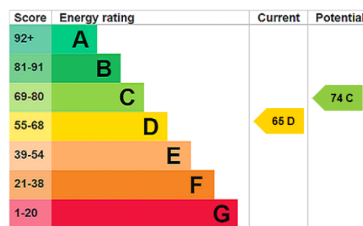


All measurements of walls, doors, windows, fittings and appliances, including their size and location, are shown as standard sizes and do not constitute any warranty or representation by the seller, their agent or CP Creative. Any intending purchaser must satisfy himself by inspection or otherwise as to the correctness of the information contained in these plans. This plan is for illustrative purposes only and should be used as such by any prospective purchasers.

**Winkworth**

This floorplan is for illustration purposes only and is not to scale. The position and size of doors, windows, appliances and other features are approximate.

EPC Graph - FIN240319



**Tenure:** Freehold

**Council Tax Band:** To be confirmed

Where no figures are shown, we have been unable to ascertain the information. All figures that are shown were correct at the time of printing.

Finchley | 020 8349 3388 | finchley@winkworth.co.uk

**Winkworth**

for every step...

[winkworth.co.uk](http://winkworth.co.uk)

Winkworth wishes to inform prospective buyers and tenants that these particulars are a guide and act as information only. All our details are given in good faith and believed to be correct at the time of printing but they don't form part of an offer or contract. No Winkworth employee has authority to make or give any representation or warranty in relation to this property. All fixtures and fittings, whether fitted or not are deemed removable by the vendor unless stated otherwise and room sizes are measured between internal wall surfaces, including furnishings.