



OAKHURST GROVE, EAST DULWICH, SE22
OIEO £425,000 LEASEHOLD

A STUNNING, ONE DOUBLE BEDROOM FLAT IN
A FANTASTIC TREE LINED RESIDENTIAL STREET
IN SE22 ON THE PECKHAM RYE BORDERS.

Dulwich | 020 8299 2722 | dulwich@winkworth.co.uk

Winkworth

winkworth.co.uk

See things differently



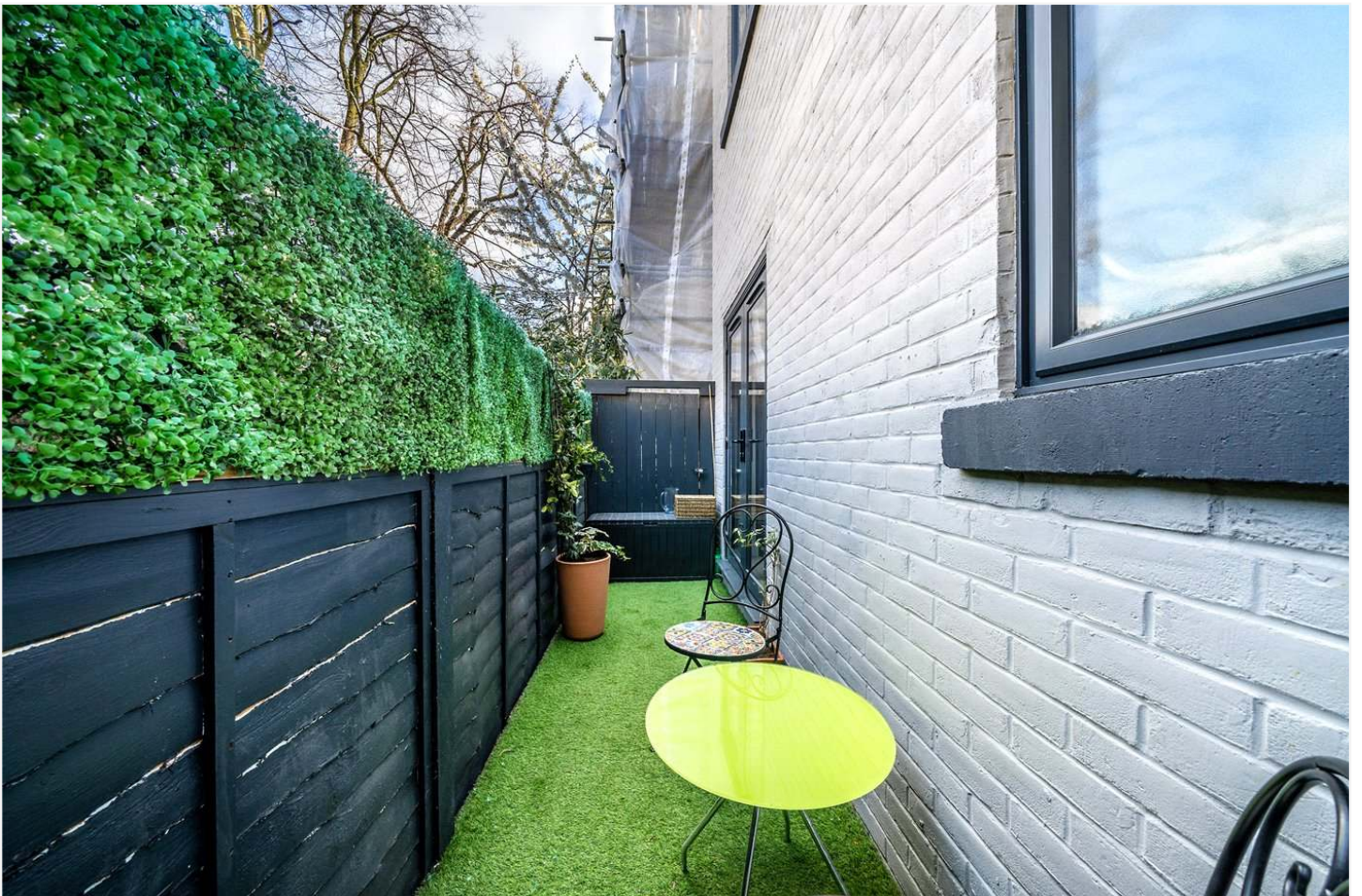
DESCRIPTION:

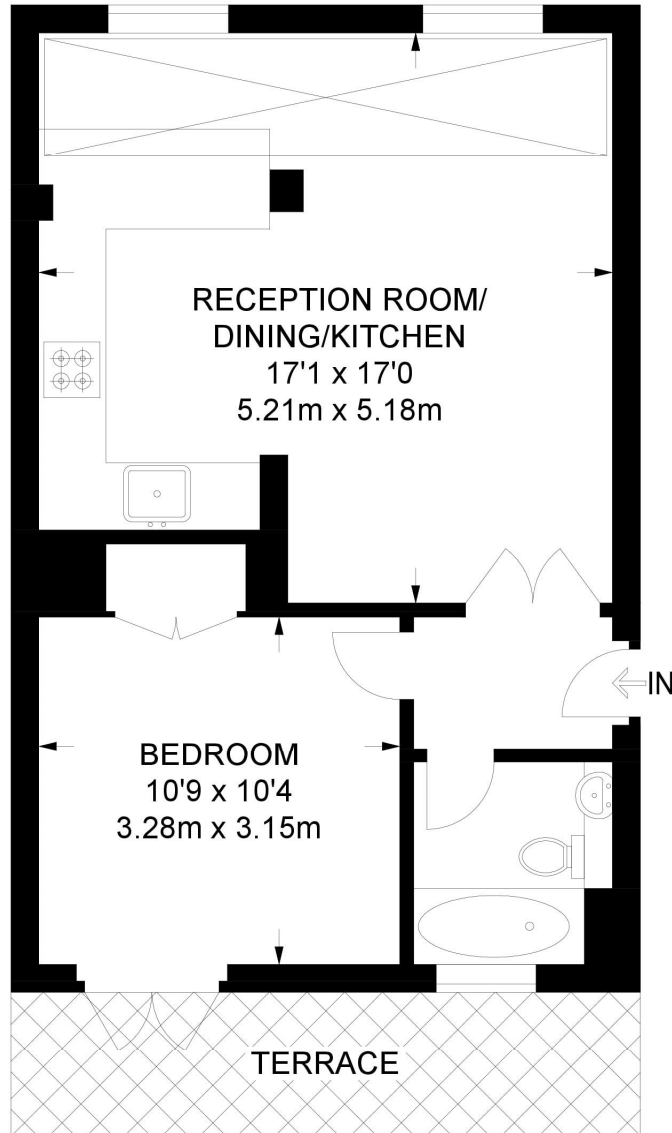
A stunning, one double bedroom flat in a fantastic tree lined residential street in SE22 on the Peckham Rye borders. This beautiful flat is offered to the market in fantastic condition. Comprising a large double bedroom with built in wardrobes, high ceilings and doors leading out to a sunny private patio to rear. There is a stunning, large open plan kitchen reception, complete with large dining area covered by large sky lights, that beam light throughout the living area throughout the day. The kitchen is fully fitted, with wooden work tops, engineered wood flooring and built-in appliances. Further benefits include bike storage and secure intercom entry system. The flat is situated a stone's throw from Peckham Rye park. Transport links are ideally provided via Peckham Rye for the overground and East Dulwich for direct links to London Bridge.

AT A GLANCE

- One Bedroom
- Purpose Built Flat
- Open-Plan Reception-Kitchen
- Modern Bathroom
- Private Patio
- Leasehold



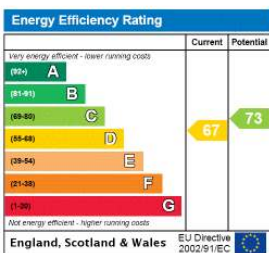




GROUND FLOOR

**APPROXIMATE GROSS INTERNAL AREA
474 SQ FT / 44 SQ M**

This floorplan is for illustration purposes only and is not to scale. The position and size of doors, windows, appliances and other features are approximate.



Dulwich | 020 8299 2722 | dulwich@winkworth.co.uk



winkworth.co.uk

See things differently

Winkworth wishes to inform prospective buyers and tenants that these particulars are a guide and act as information only. All our details are given in good faith and believed to be correct at the time of printing but they don't form part of an offer or contract. No Winkworth employee has authority to make or give any representation or warranty in relation to this property. All fixtures and fittings, whether fitted or not are deemed removable by the vendor unless stated otherwise and room sizes are measured between internal wall surfaces, including furnishings.