



## Fulham Road, West Chelsea, London, SW10

£500 per week\* / £2,166.67 per month – Furnished

A contemporary and stylishly refurbished one bedroom flat, ideally located in this period property on 'The Beach' of the Fulham Road.

1 Bedroom | 1 Reception Room | 1 Bathroom | First Floor Flat | 476 Approx sq ft

APPLICANT FEES MAY BE APPLICABLE  
SECURITY DEPOSIT OF 5 WEEKS' RENT  
HOLDING DEPOSIT OF 1 WEEK'S RENT

**Winkworth**

[winkworth.co.uk](http://winkworth.co.uk)

for every step...



## DESCRIPTION

A contemporary and stylishly refurbished one bedroom flat, ideally located in this period property on 'The Beach' of the Fulham Road. The property features a spacious open-plan kitchen/reception room with modern, fully-fitted kitchen, a separate utility/storage room, contemporary bathroom and well proportioned master bedroom. The flat has been renovated to a very high standard, optimizing space and light with high quality fixtures and fittings. The property is available from mid-March on a furnished basis.

## ACCOMMODATION

1 Bedroom, 1 Reception Room, 1 Bathroom,  
First Floor, Furnished, 476 Approx Sq ft

## COUNCIL TAX BAND

Band E



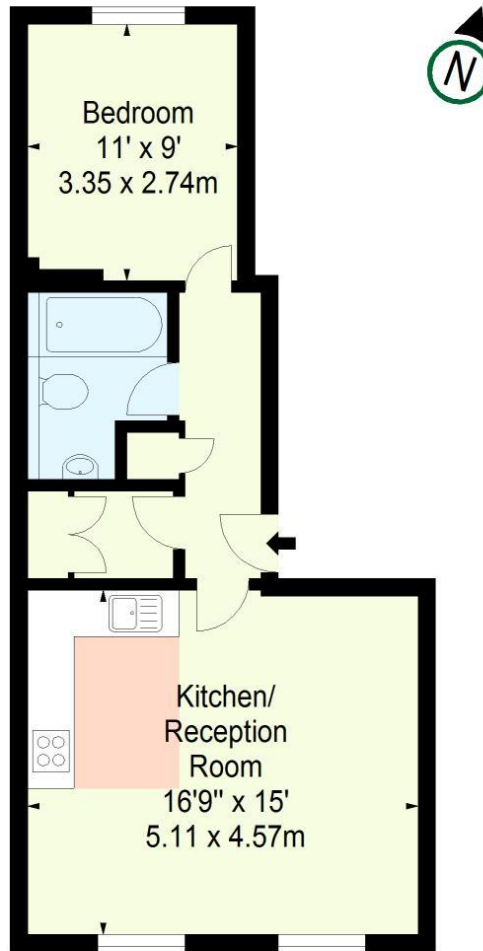
# FULHAM ROAD SW10

Approx. Gross Internal Area \*

476 Ft<sup>2</sup> - 44.22 M<sup>2</sup>

Illustration For Identification Only, Not to Scale  
All Calculations include Any/All Areas Under 1.5m Head Height.

\* As Defined by RICS - Code of Measuring Practice



First Floor



[www.bkrfloorplans.co.uk](http://www.bkrfloorplans.co.uk)

T: 0845 257 2023

© BKR 2013

*This floorplan is for illustration purposes only and is not to scale. The position and size of doors, windows, appliances and other features are approximate.*

*\*Please note, the rent cannot be paid on a weekly basis.*

South Kensington Lettings | 020 7370 6767 | [lettings.southken@winkworth.co.uk](mailto:lettings.southken@winkworth.co.uk)

**Winkworth**

[winkworth.co.uk](http://winkworth.co.uk)

for every step...

Winkworth wishes to inform prospective buyers and tenants that these particulars are a guide and act as information only. All our details are given in good faith and believed to be correct at the time of printing but they don't form part of an offer or contract. No Winkworth employee has authority to make or give any representation or warranty in relation to this property. All fixtures and fittings, whether fitted or not are deemed removable by the vendor unless stated otherwise and room sizes are measured between internal wall surfaces, including furnishings.