



CRYSTAL PALACE ROAD, EAST DULWICH, SE22
GUIDE PRICE £500,000 LEASEHOLD

A FANTASTIC, BEAUTIFULLY PRESENTED
TWO DOUBLE BEDROOM, GROUND FLOOR
MAISONETTE SITUATED IN EAST DULWICH.

Dulwich | 020 8299 2722 | dulwich@winkworth.co.uk

Winkworth

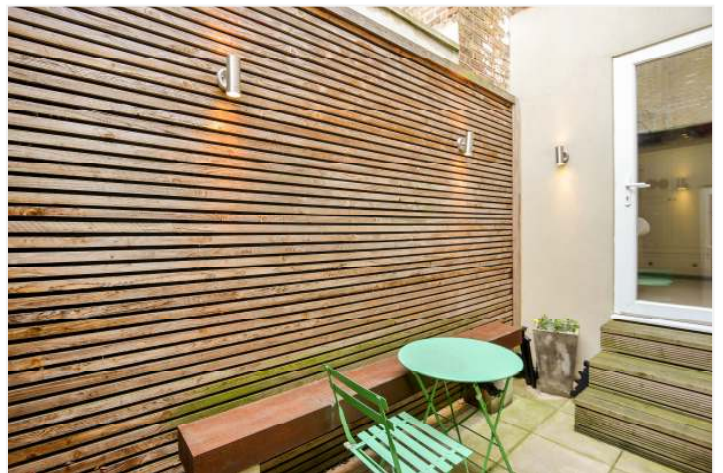


DESCRIPTION:

This fantastic beautifully presented two double bedroom, ground floor maisonette is situated right in the heart of East Dulwich, just off Lordship Lane. The property offers a large wide open plan kitchen-living area with door out onto the patio garden to rear, two very good sized double bedrooms and a modern bathroom. Located within easy reach of the bars, restaurants, shops and cinema on Lordship Lane as well as excellent transport links into Central London via East Dulwich or the bus network. This is a fantastic maisonette and early viewing is recommended.

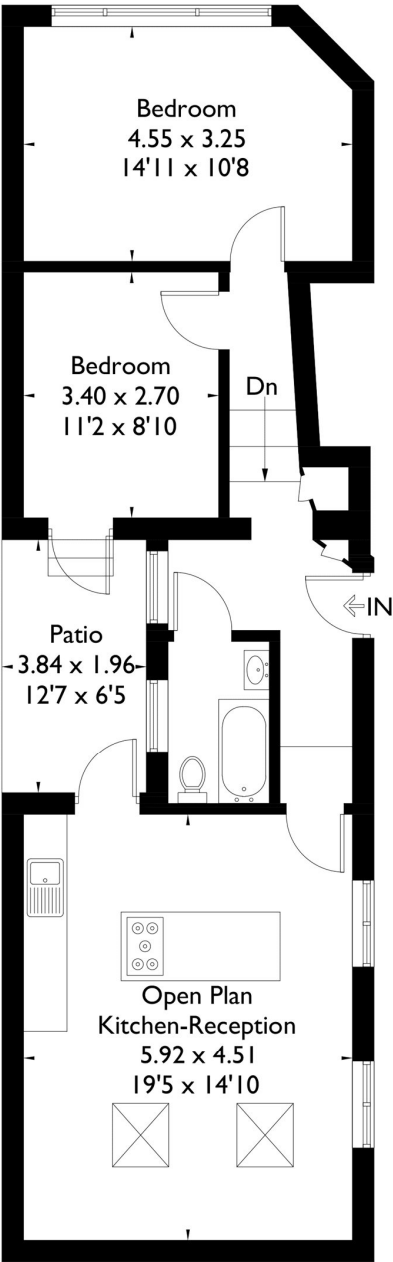
AT A GLANCE

- Two Double Bedrooms
- Ground Floor Maisonette
- Open Plan Kitchen-Reception
- Modern Kitchen
- Modern Bathroom
- Private Patio
- Leasehold
- Central Location



Crystal Palace Road, East Dulwich, SE22

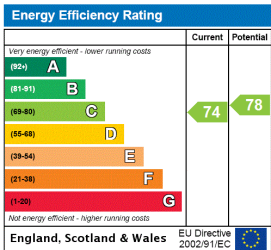
Approximate Gross Internal Area = 66 sq m / 710 sq ft



FLOORPLANZ © 2017 0203 9056099 Ref: 182749

This plan is for layout guidance only. Drawn in accordance with RICS guidelines. Not drawn to scale unless stated. Windows & door openings are approximate. Whilst every care is taken in the preparation of this plan, please check all dimensions, shapes & compass bearings before making any decisions reliant upon them.

This floorplan is for illustration purposes only and is not to scale. The position and size of doors, windows, appliances and other features are approximate.



Dulwich | 020 8299 2722 | dulwich@winkworth.co.uk



winkworth.co.uk

See things differently

Winkworth wishes to inform prospective buyers and tenants that these particulars are a guide and act as information only. All our details are given in good faith and believed to be correct at the time of printing but they don't form part of an offer or contract. No Winkworth employee has authority to make or give any representation or warranty in relation to this property. All fixtures and fittings, whether fitted or not are deemed removable by the vendor unless stated otherwise and room sizes are measured between internal wall surfaces, including furnishings.