



BLOOMFIELD HOUSE, OLD MONTAGUE STREET, LONDON, E1  
**£289,995 LEASEHOLD**

**A SUPERB ONE BEDROOM FLAT SET IN A  
PLEASANT PURPOSE-BUILT BLOCK WITH  
PRIVATE BALCONY.**

Shoreditch | 020 7749 7650 | [shoreditch@winkworth.co.uk](mailto:shoreditch@winkworth.co.uk)

**Winkworth**

*[winkworth.co.uk](http://winkworth.co.uk)*

See things differently





### DESCRIPTION:

Conveniently located for Shoreditch, Whitechapel, Bethnal Green and the numerous amenities of Shoreditch High Street, this bright one-bedroom third floor flat forms part of a well-maintained purpose-built block. Bloomfield House further provides excellent links to Moorgate, Barbican and the City.

Spanning over 500sqft, the living space comprises a large reception room with door leading out to private balcony, separate kitchen with space for white goods, family bathroom with shower over bath, and a generous size bedroom. Additional benefits include good storage, double glazing, residents lift and automated entry system.

**Winkworth**

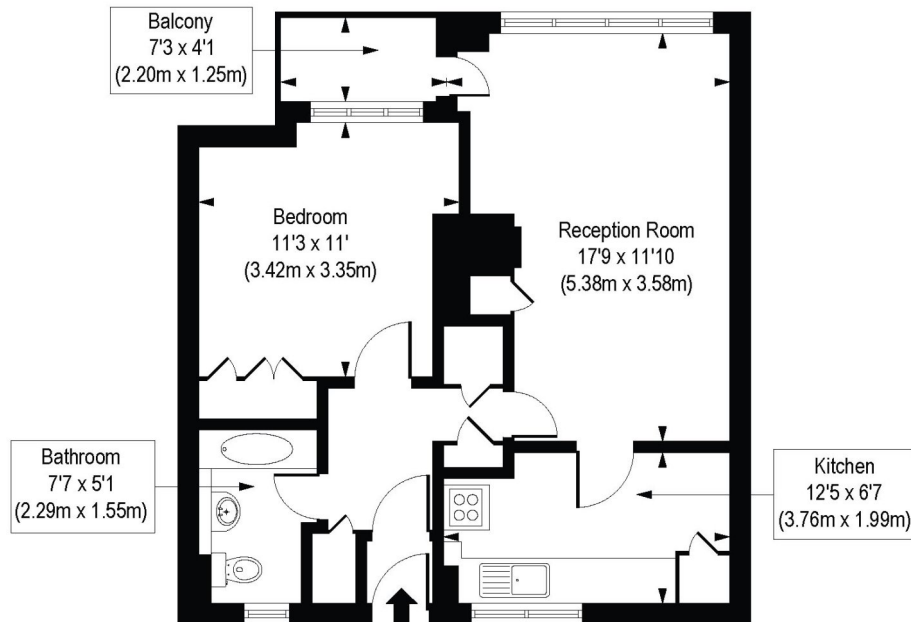
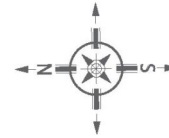




Winkworth

# Bloomfield House, Old Montague Street, E1

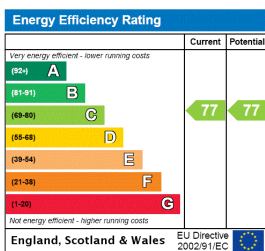
Approx. Gross Internal Floor Area 515 sq. ft / 47.87 sq. m



Third Floor

COMPLIANT WITH RICS CODE OF MEASURING PRACTICE. Floorplan is for illustrative purposes only and is not to scale. Every attempt has been made to ensure the accuracy of the floorplan shown, however all measurements, fixtures, fittings and data shown are an approximate interpretation for illustrative purposes only. Liability for errors, omissions or mis-statement through negligence or otherwise is hereby excluded.

This floorplan is for illustration purposes only and is not to scale. The position and size of doors, windows, appliances and other features are approximate.



Shoreditch | 020 7749 7650 | shoreditch@winkworth.co.uk

**Winkworth**

[winkworth.co.uk](http://winkworth.co.uk)

See things differently

Winkworth wishes to inform prospective buyers and tenants that these particulars are a guide and act as information only. All our details are given in good faith and believed to be correct at the time of printing but they don't form part of an offer or contract. No Winkworth employee has authority to make or give any representation or warranty in relation to this property. All fixtures and fittings, whether fitted or not are deemed removable by the vendor unless stated otherwise and room sizes are measured between internal wall surfaces, including furnishings.