

EAGLE WORKS EAST, 58 QUAKER STREET, LONDON, E1
£550,000 LEASEHOLD

AN ATTRACTIVE TWO BEDROOM APARTMENT SITUATED IN THIS GATED DEVELOPMENT CLOSE TO SPITALFIELDS

Shoreditch | 020 7749 7650 | shoreditch@winkworth.co.uk

Winkworth

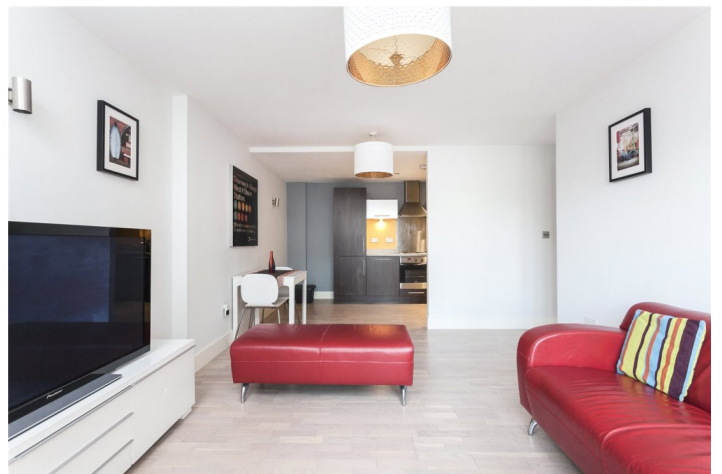


DESCRIPTION:

A superb two-bedroom apartment available in the popular Eagle Works development situated between Brick Lane and Spitalfields Market. Upon entering the property, you are greeted with entrance hallway with spacious storage cupboard, family bathroom, master bedroom, second bedroom and open plan kitchen/living room with Juliette balcony. The property has been tastefully decorated throughout and is being offered chain free.

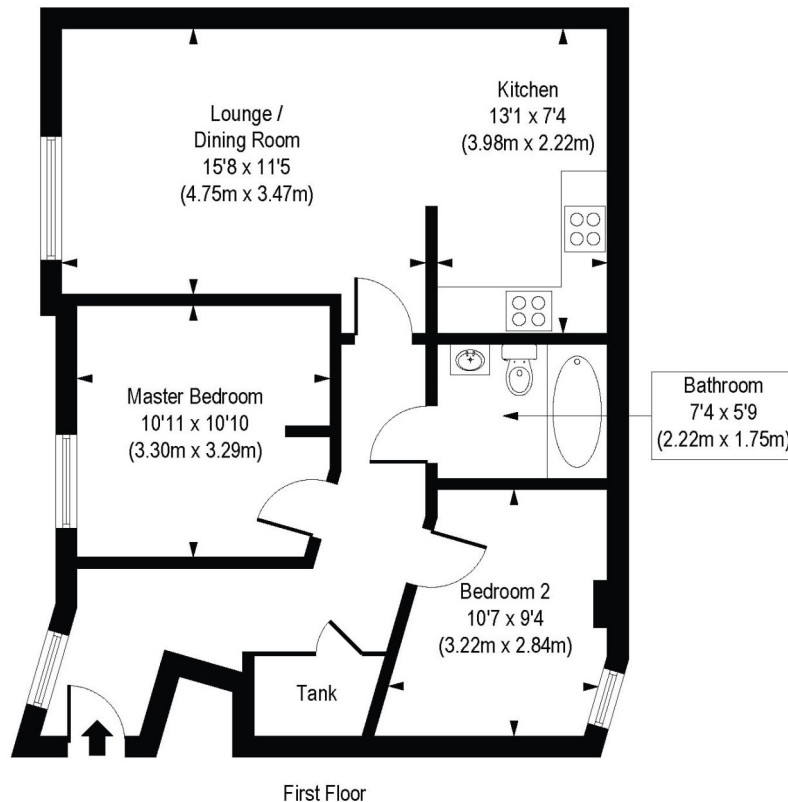
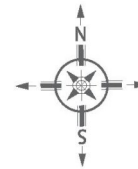
Situated just off Commercial Street you are in the heart of Shoreditch and a stone's throw from the famous Spitalfields market and Brick Lane with their boutique shops, pop ups, cafes, bars and restaurants at your disposal. The property also benefits from an abundance of transport links close at hand with Shoreditch High Street (Overground) at the end of the road, Liverpool Street, Aldgate, Aldgate East and Whitechapel (Crossrail) a short distance away offering fantastic access across London.

Winkworth



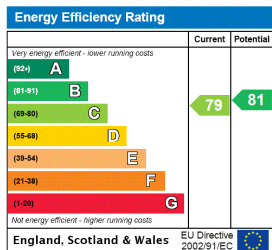
Winkworth

Eagle Works East, Quaker Street, E1
Approx. Gross Internal Floor Area 685 sq. ft / 63.66 sq. m



COMPLIANT WITH RICS CODE OF MEASURING PRACTICE. Floorplan is for illustrative purposes only and is not to scale. Every attempt has been made to ensure the accuracy of the floorplan shown, however all measurements, fixtures, fittings and data shown are an approximate interpretation for illustrative purposes only. Liability for errors, omissions or mis-statement through negligence or otherwise is hereby excluded.

This floorplan is for illustration purposes only and is not to scale. The position and size of doors, windows, appliances and other features are approximate.



Shoreditch | 020 7749 7650 | shoreditch@winkworth.co.uk



winkworth.co.uk

See things differently

Winkworth wishes to inform prospective buyers and tenants that these particulars are a guide and act as information only. All our details are given in good faith and believed to be correct at the time of printing but they don't form part of an offer or contract. No Winkworth employee has authority to make or give any representation or warranty in relation to this property. All fixtures and fittings, whether fitted or not are deemed removable by the vendor unless stated otherwise and room sizes are measured between internal wall surfaces, including furnishings.