



CRANES WAY, UNITED KINGDOM, WD6

£499,950 FREEHOLD

A CHAIN FREE THREE BEDROOM FAMILY HOUSE IN SOUTH BOREHAMWOOD

Borehamwood | 020 8953 8899 | borehamwood@winkworth.co.uk



DESCRIPTION:

After being in the same family occupation since its construction over seventy years ago, this extended three bedroom family house is offered for sale chain free

In need of updating the property currently measures approaching 900 square feet and offers scope for extension and development subject to the usual planning consents.

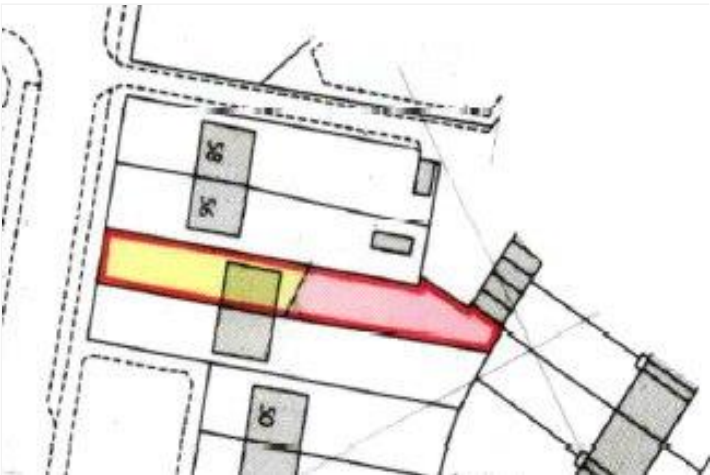
To the rear of the property there is off street parking accessed via a private service road.

Located in a sought after road on the South side of Borehamwood, several Ofsted rated "Good" and "Outstanding" Schools including Monksmead, Kenilworth and Yavneh are located nearby.

AT A GLANCE

- 3 Bedrooms
- Chain Free
- Parking To Rear
- Gas Central Heating
- Double Glazed
- 898 Square Feet
- Southerly Rear Garden
- Scope To Extend (Stpp)





Approximate Gross Internal Area = 83.4 sq m / 898 sq ft

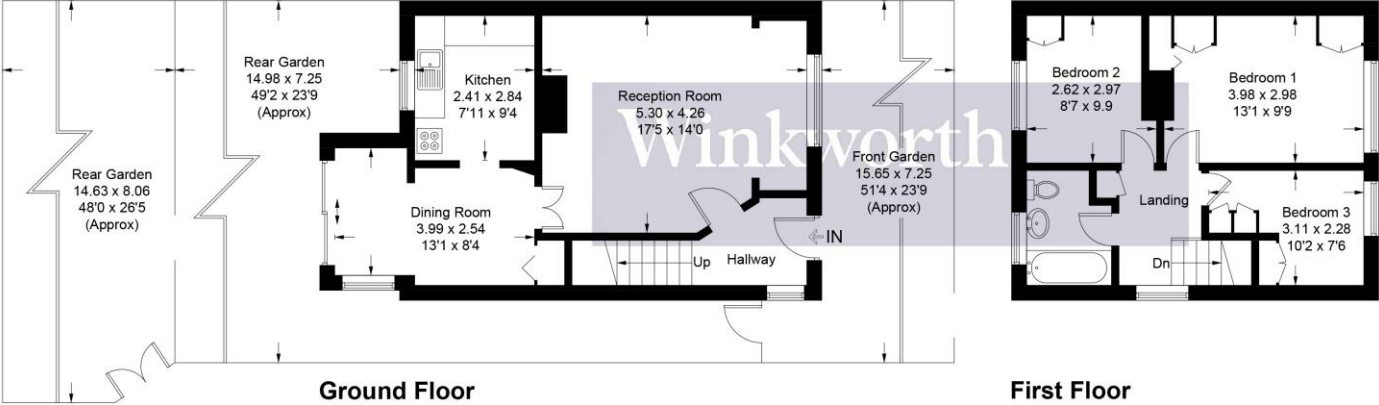


Illustration for identification purposes only, measurements are approximate, not to scale. Winkworth © 2025 (ID1212126)

This floorplan is for illustration purposes only and is not to scale. The position and size of doors, windows, appliances and other features are approximate.

Score	Energy rating	Current	Potential
92+	A		
81-91	B		84 B
69-80	C		
55-68	D		
39-54	E	48 E	
21-38	F		
1-20	G		

Tenure: Freehold

Term: 0 year and 0 months

Service Charge: £0 per annum

Ground Rent: £ 0 Annually (subject to increase)

Council Tax Band: D

Where no figures are shown, we have been unable to ascertain the information. All figures that are shown were correct at the time of printing.