



CRESCENT LANE, LONDON, SW4
£430,000

DESCRIPTION:

A bright and well-presented one-bedroom apartment on the second floor of a modern building in SW4, close to the shops and cafés of Abbeville Village. The flat includes off-street parking, a communal garden and a 101-year lease.

Clapham | 0207 871 2777

Winkworth

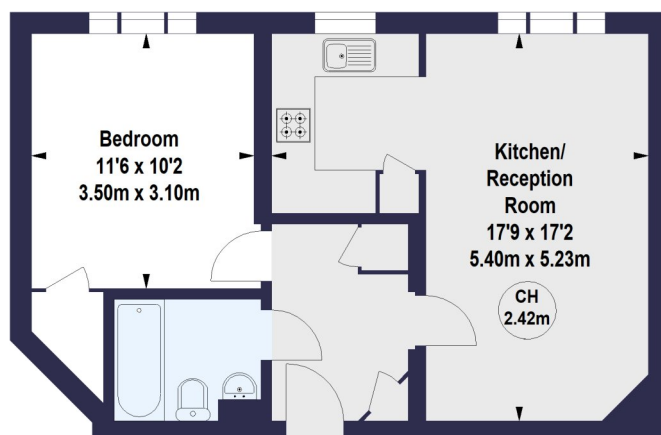
for every step...

winkworth.co.uk

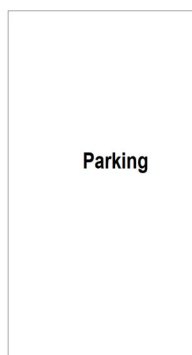
Crescent Lane, SW4

Approx. Gross Internal Area 45.61 sq m / 491 sq ft

Key :
CH - Ceiling Height



Second Floor



Parking

Winkworth

(Not shown in actual
location / orientation)

The floor plan is not to scale and measurements and areas shown are approximate and therefore should be used for illustrative purposes only. The plan has been prepared in accordance with the RICS code of Measuring Practice and whilst we have confidence in the information produced, it must not be relied on. If there is any aspect of particular importance, you should carry out or commission your own inspection of the property.
Copyright of KTV Photography.

This floorplan is for illustration purposes only and is not to scale. The position and size of doors, windows, appliances and other features are approximate.

For more details visit: <https://www.winkworth.co.uk/sale/property/CLP250052>

Tenure: Share of Freehold
Term: Expires - 01/12/2126
Lease length: 101 Year
Service Charge: £3000 per annum

Where no figures are shown, we have been unable to ascertain the information. All figures that are shown were correct at the time of printing.

Clapham | 0207 871 2777

Winkworth

for every step...

[winkworth.co.uk](https://www.winkworth.co.uk)

Winkworth wishes to inform prospective buyers and tenants that these particulars are a guide and act as information only. All our details are given in good faith and believed to be correct at the time of printing but they don't form part of an offer or contract. No Winkworth employee has authority to make or give any representation or warranty in relation to this property. All fixtures and fittings, whether fitted or not are deemed removable by the vendor unless stated otherwise and room sizes are measured between internal wall surfaces, including furnishings.