



Edgewood Mews, London, N3

Offers over £400,000 *Leasehold*



Winkworth is proud to offer this, well presented, one bedroom apartment, set within the award winning Edgewood Mews Development, located in Finchley.

KEY FEATURES

- Modern purpose built block
- Top floor with lift
- Modern kitchen & bathroom
- Allocated Parking & Balcony
- Long Lease



Finchley

020 8349 3388 | finchley@winkworth.co.uk

Winkworth

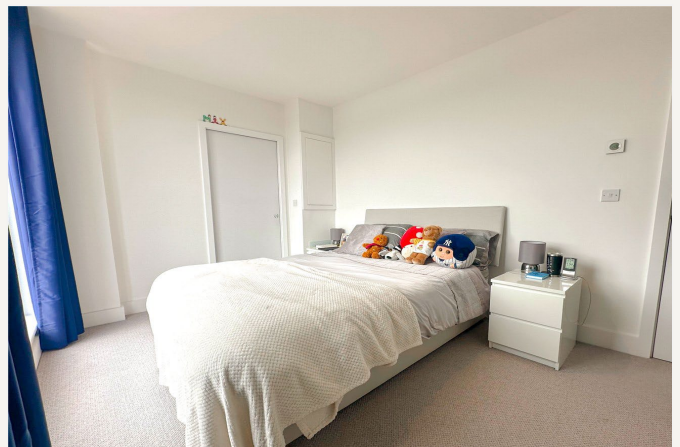
for every step...



The property offers great transport links and access to Temple Fortune shopping facilities.

This property is set on the top floor with lift access, and benefits from having off street parking and private balcony. Building warranty for 6 more years.

An internal viewing is highly recommended.





MATERIAL INFO

Tenure: Leasehold

Term: 246 year and 5 months

Service Charge: £2000 per annum

Ground Rent: £0 Annually (subject to increase)

Council Tax Band: D

INTERNAL 53 SQM & 570 SQFT
EXTERNAL 10 SQM & 107 SQFT



Score	Energy rating	Current	Potential
92+	A		
81-91	B		
69-80	C	79 C	79 C
55-68	D		
39-54	E		
21-38	F		
1-20	G		

For more information, scan the QR code or visit the link below



<https://www.winkworth.co.uk/sale/property/FIN250464>

Where no figures are shown, we have been unable to ascertain the information. All figures that are shown were correct at the time of printing.

Finchley

020 8349 3388 | finchley@winkworth.co.uk

Winkworth

for every step...

Winkworth wishes to inform prospective buyers and tenants that these particulars are a guide and act as information only. All our details are given in good faith and believed to be correct at the time of printing but they don't form part of an offer or contract. No Winkworth employee has authority to make or give any representation or warranty in relation to this property. All fixtures and fittings, whether fitted or not are deemed removable by the vendor unless stated otherwise and room sizes are measured between internal wall surfaces, including furnishings.