



ST JAMES'S DRIVE, SW12  
£435,000 LEASEHOLD

## AN EXCELLENT, WELL-PRESENTED ONE-BEDROOM FLAT FOR SALE

Tooting | 020 8767 5221 | tooting@winkworth.co.uk

**Winkworth**

for every step...

*winkworth.co.uk*

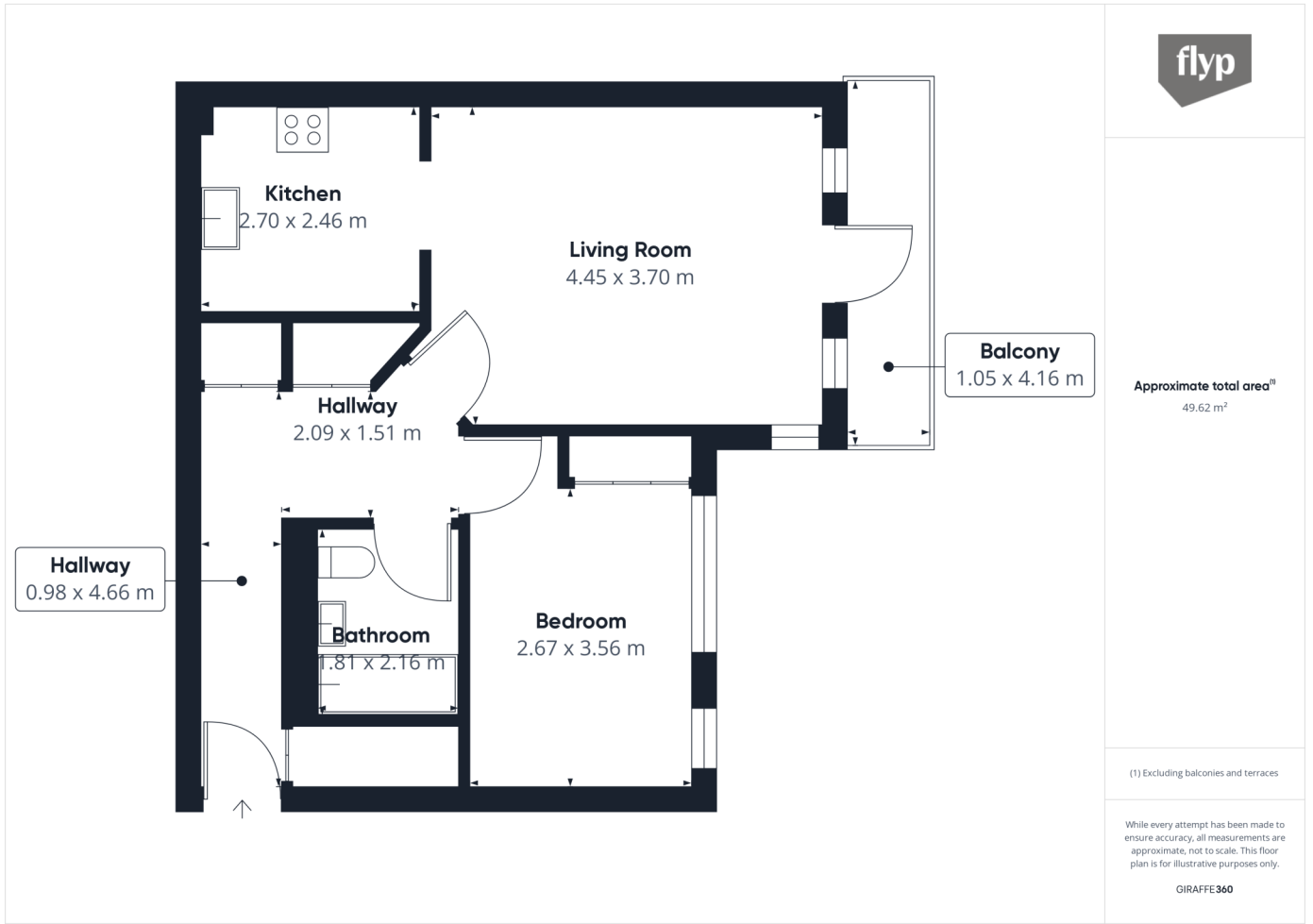


## **DESCRIPTION:**

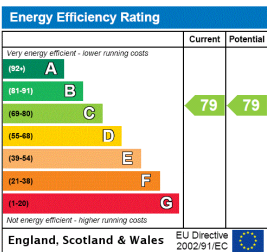
The property is an excellent, well-presented one-bedroom flat on the first floor of Naples Court in a modern residential block. In addition to great storage and designated off-street parking, the flat also benefits from a recently installed new combi boiler, dishwasher and shower.

Great transport links from Wandsworth Common, Balham, and Tooting Bec, and within 5 minutes walking distance of a superb selection of independent shops, restaurants, bars and cafés on Trinity and Bellvue roads, including a Michelin star restaurant. Local amenities also include a brewery tap room; hairdressers; convenience stores and much more.





This floorplan is for illustration purposes only and is not to scale. The position and size of doors, windows, appliances and other features are approximate.



Tooting | 020 8767 5221 | tooting@winkworth.co.uk

for every step...

winkworth.co.uk

Winkworth wishes to inform prospective buyers and tenants that these particulars are a guide and act as information only. All our details are given in good faith and believed to be correct at the time of printing but they don't form part of an offer or contract. No Winkworth employee has authority to make or give any representation or warranty in relation to this property. All fixtures and fittings, whether fitted or not are deemed removable by the vendor unless stated otherwise and room sizes are measured between internal wall surfaces, including furnishings.