



**99 Ashton Gardens, Eastleigh, Hampshire, SO50 4DG**

**Winkworth**



## MODERN THREE BEDROOM FAMILY HOME

Ashton Gardens is in a great location, just a short walk from Eastleigh's vibrant town centre. Eastleigh has an excellent range of shops, supermarkets and banks within the Swan centre and on the High Street. The Swan Centre also incorporates a multi-screen cinema and a variety of restaurants to suit all tastes, perfect for family outings. Nearby is the Places Leisure facility which offers plenty of recreational facilities for all ages. Eastleigh is ideally located to provide easy motorway access to Winchester and Southampton. From the nearby railway station London Waterloo is accessible in around one hour 20 minutes.

This extremely well presented three-bedroom town house is located close to Eastleigh Town Centre. The light and airy accommodation on offer comprises entrance hallway leading to a well-appointed kitchen with a designated dining area. The sitting room features double doors onto the rear garden and a contemporary media wall. The ground floor also comprises a downstairs cloakroom. To the first floor are bedrooms two and three, bedroom three currently set up as an office, along with the family bathroom with shower over bath. On the second floor is the principal bedroom with en suite shower room and a useful array of built in wardrobes.

Outside the property benefits from allocated parking for one car, visitors parking is also available. To the rear, the fully enclosed garden has a patio area ideal for 'al fresco' dining the remainder being laid to lawn, easy to maintain and ideal for families.

- All Mains Utilities
- Superfast Broadband Available
- Council Tax Band – D



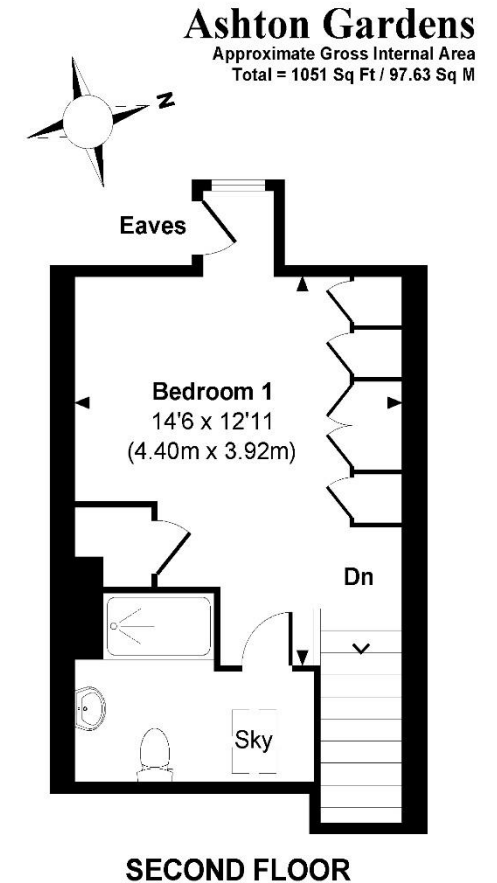
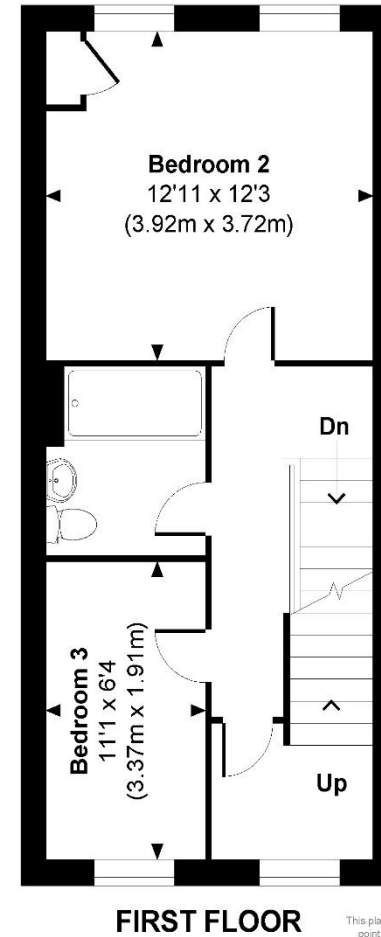
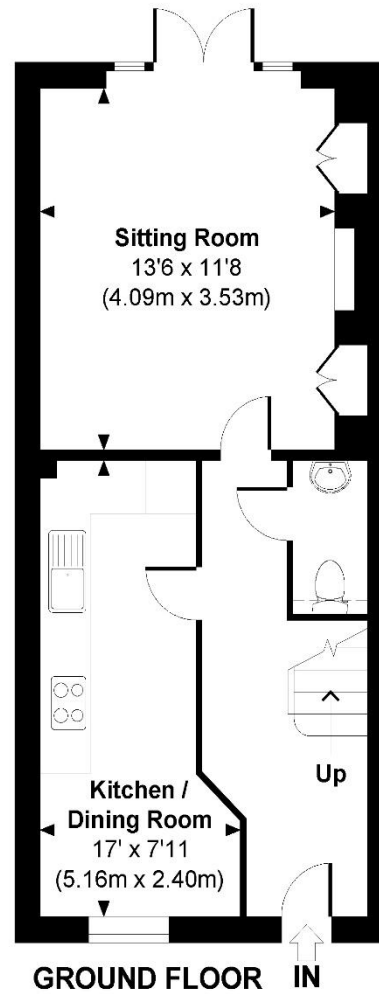
# Winkworth

**Address: 99 Ashton Gardens,  
Eastleigh, Hampshire SO50 4DG**

**Council Tax Band: D**

**EPC: B**

**Tenure: Freehold**



© www.propertyfocus.co.uk | Professional Property Photography & Floorplans  
This plan is for illustrative purposes only and is not to scale. If specified, the Gross Internal Area (GIA), dimensions, North point orientation and the size and placement of features are approximate and should not be relied on as a statement of fact. No guarantee is given for the GIA and no responsibility is taken for any error, omission or misrepresentation.

[winkworth.co.uk/romsey](http://winkworth.co.uk/romsey)

## Winkworth Romsey

18 Market Place, Romsey, Hampshire, SO51 8NA  
01794 511911 | [romsey@winkworth.co.uk](mailto:romsey@winkworth.co.uk)

[winkworth.co.uk/romsey](http://winkworth.co.uk/romsey)

## Winkworth Winchester

2 Black Swan Buildings, Southgate Street,  
Winchester, Hampshire, SO23 9DT  
01962 866777 | [winchester@winkworth.co.uk](mailto:winchester@winkworth.co.uk)

## Winkworth Mayfair & Country House Department

11 Berkeley Street, Mayfair, London, W1J 8DS  
020 7871 0589 | [countryhouse@winkworth.co.uk](mailto:countryhouse@winkworth.co.uk)

# Winkworth

See things differently