



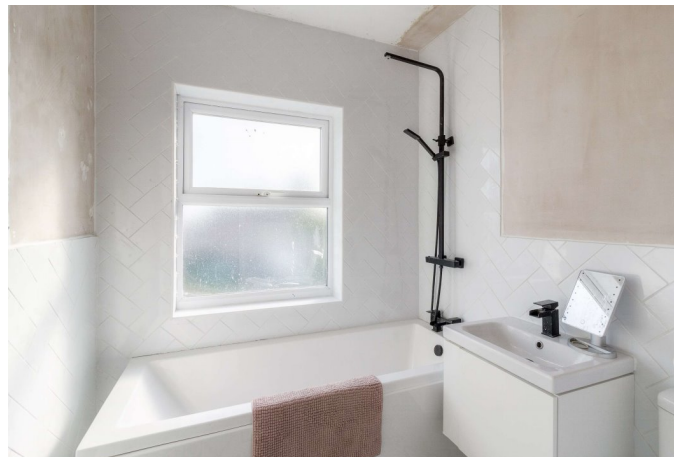
MAIN ROAD, NORTHAMPTON, NORTHAMPTONSHIRE, NN5
£350,000 FREEHOLD





MAIN ROAD, NORTHAMPTON,
NORTHAMPTONSHIRE, NN5

Fine example of a mature, much improved semi-detached home in a popular setting with good size gardens to the rear and off road parking. In brief, the accommodation includes hall, sitting room, stunning open plan kitchen/dining room with bi-folding doors leading to the large rear garden and cloakroom. On the first floor is a master bedroom, two further bedrooms and a family bathroom. The landscaped gardens to the rear are a particular feature being of a good size family garden. To the front there is off road parking for several vehicles.



- EXTENDED
- THREE BEDROOMS
- STUNNING KITCHEN/DINING ROOM
- CLOAKROOM
- UTILITY ROOM
- LARGE REAR GARDEN
- OFF ROAD PARKING
- REFITTED BATHROOM
- NO UPPER CHAIN



GROUND FLOOR
572 sq.ft. (53.1 sq.m.) approx.

1ST FLOOR
373 sq.ft. (34.7 sq.m.) approx.



Whilst every attempt has been made to ensure the accuracy of the floorplan contained here, measurements of doors, windows, rooms and any other items are approximate and no responsibility is taken for any error, omission or mis-statement. This plan is for illustrative purposes only and should be used as such by any prospective purchaser. The services, systems and appliances shown have not been tested and no guarantee as to their operability or efficiency can be given.
Made with Metropix ©2022

Northampton | 01604 204455 | northampton@winkworth.co.uk

winkworth.co.uk

Winkworth wishes to inform prospective buyers and tenants that these particulars are a guide and act as information only. All our details are given in good faith and believed to be correct at the time of printing but they don't form part of an offer or contract. No Winkworth employee has authority to make or give any representation or warranty in relation to this property. All fixtures and fittings, whether fitted or not are deemed removable by the vendor unless stated otherwise and room sizes are measured between internal wall surfaces, including furnishings.

