



WILDMOOR, HOOK, RG27 0HE
£3,250 PER MONTH UNFURNISHED

**A STUNNING AND SPACIOUS THREE
BEDROOM CONVERTED BARN SET WITHIN
BEAUTIFUL OPEN FARMLAND.**

Reading | 0118 4022 300 | reading@winkworth.co.uk

Winkworth

for every step...

winkworth.co.uk



DESCRIPTION:

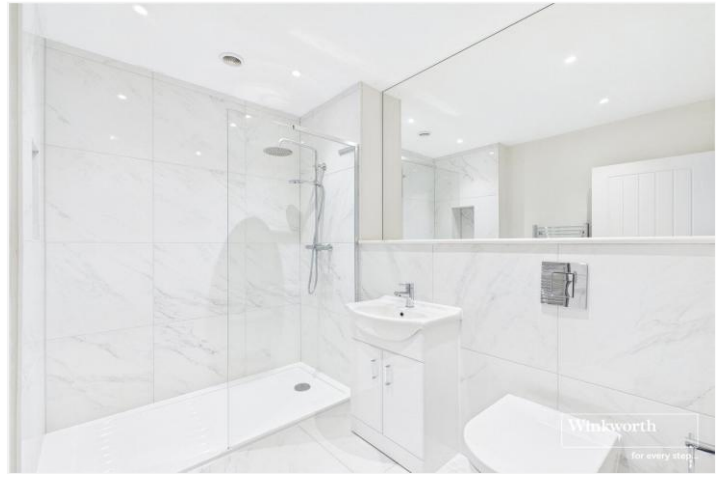
A converted barn situated within Water Bailiffs Farm which is a beautiful open farmland used for grazing horses and Belted Galloway Cows. The flexible accommodation comprises; large open plan kitchen/dining/family room with two double doors opening to private enclosed garden, downstairs bedroom/reception room with shower room, utility/boot room; first floor comprises master bedroom/ living room with delightful countryside views, 2 further double bedrooms both with en-suites, 4 piece family bathroom. The property is accessed via a gravelled drive and sits near water meadows and is about 200 meters from the River Loddon and Lyde. Unfurnished and Available now.

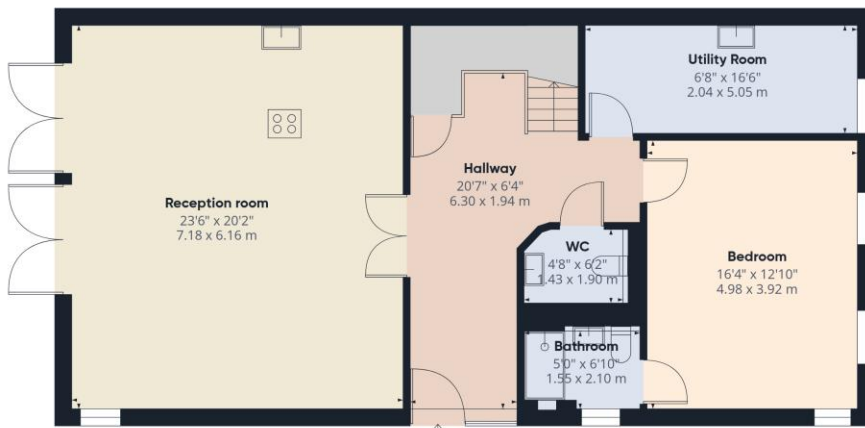
AT A GLANCE

- Three bedroom converted barn
- Spacious and flexible accommodation
- Set within beautiful open farmland
- Three en suites and family bathroom
- Finished to high specification throughout
- Private garden
- Unfurnished

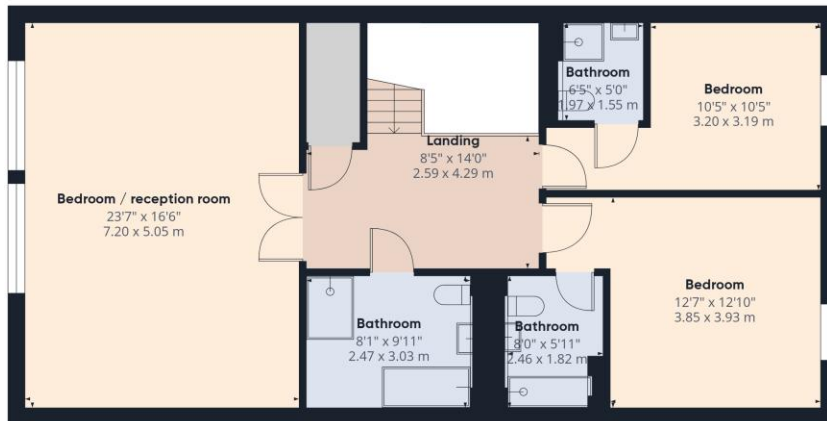








Ground Floor



Floor 1

Winkworth

Approximate total area⁽¹⁾
2118 ft²
196.7 m²

(1) Excluding balconies and terraces

Calculations reference the RICS IPMS 3C standard. Measurements are approximate and not to scale. This floor plan is intended for illustration only.

GIRAFFE 360

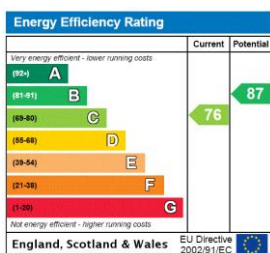
This floorplan is for illustration purposes only and is not to scale. The position and size of doors, windows, appliances and other features are approximate.

Deposit: £3,750.00

Holding Deposit: £750.00

Council Tax Band: E

Where no figures are shown, we have been unable to ascertain the information. All figures that are shown were correct at the time of printing.



Reading | 0118 4022 300 | reading@winkworth.co.uk

Winkworth

for every step...

winkworth.co.uk

Winkworth wishes to inform prospective buyers and tenants that these particulars are a guide and act as information only. All our details are given in good faith and believed to be correct at the time of printing but they don't form part of an offer or contract. No Winkworth employee has authority to make or give any representation or warranty in relation to this property. All fixtures and fittings, whether fitted or not are deemed removable by the vendor unless stated otherwise and room sizes are measured between internal wall surfaces, including furnishings.