



8 Longcroft Road RG20 5TP

A smart first-floor flat that offers well-planned living space in a convenient location.

Inside, the property features a bright open-plan kitchen/dining/sitting room, perfect for modern living. It comes with a really good sized double bedroom, while the additional office makes an ideal home-working space or useful storage area. The bathroom is fitted with a shower.

The property has been beautifully updated throughout.

The property comes with residents parking and is connected to all mains utilities. It's powered by electric heating.

There is ultrafast broadband available and no known mobile connectivity issues.

EPC: E

Basingstoke and Deane Council Tax Band: B



Winkworth

AT A GLANCE

Living Room
Kitchen
Double Bedroom
Shower Room
Office Space
Residents Parking

LEASEHOLD DETAILS:

83 Years remaining on the lease
Ground rent - £10 per annum
Service Charge - £396 per annum
Managing agent - Vivid Housing

Utilities

Mains water
Mains Drainage
Mains Electric

DIRECTIONS

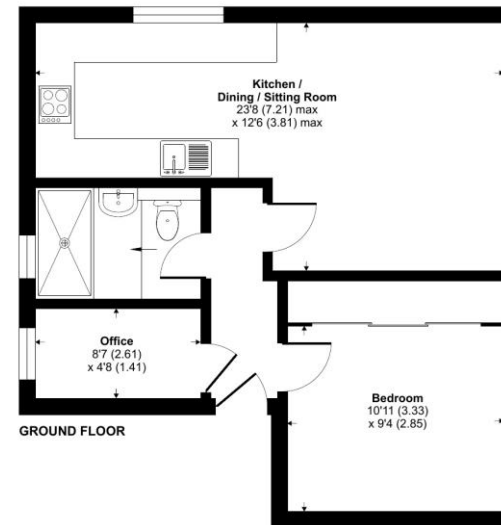
What3words://messaging.snug.shall

Longcroft Road, Newbury, RG20

Approximate Area = 510 sq ft / 47.4 sq m



For identification only - Not to scale



Floor plan produced in accordance with RICS Property Measurement 2nd Edition, incorporating International Property Measurement Standards (IPMS2 Residential). © richcom 2024. Produced for Winkworth. REF: 1347739

Winkworth



Newbury Office

43 Northbrook Street, Newbury, Berkshire RG14 1DT
01635 552552 | newbury@winkworth.co.uk

[winkworth.co.uk/newbury](https://www.winkworth.co.uk/newbury)

Winkworth

See things differently.