



18 LUKER COURT

NEWBURY RG14 6EG

A superb ground floor apartment in this converted former school.

The flat has high ceilings and plenty of character.

There are two double bedrooms, the master having an ensuite and the other served by a family bathroom.

The open plan kitchen/ living and dining space has plenty of room for a table and sofa and the kitchen is fully fitted with appliances.

There is one parking space.

No onward chain.



Winkworth

AT A GLANCE

848 Square feet / 78 Square metres
Two double bedrooms
Two bath/shower rooms
Open plan living area
Kitchen
One parking space
Communal grounds
No onward chain

UTILITIES

Mains water, electricity, drainage.
West Berkshire Council Band C
EPC D

LEASEHOLD DETAILS

125 year lease from 2012.
Ground rent; Believed to be approx £330 pa.
Service charge; £927 for the six months April to
Sept 23.
Block managers; First Port
A copy of the lease is available on request.

SITUATION

The flat is on the ground floor of this beautiful converted, former school. It is within walking distance of the town centre and railway station.

DIRECTIONS

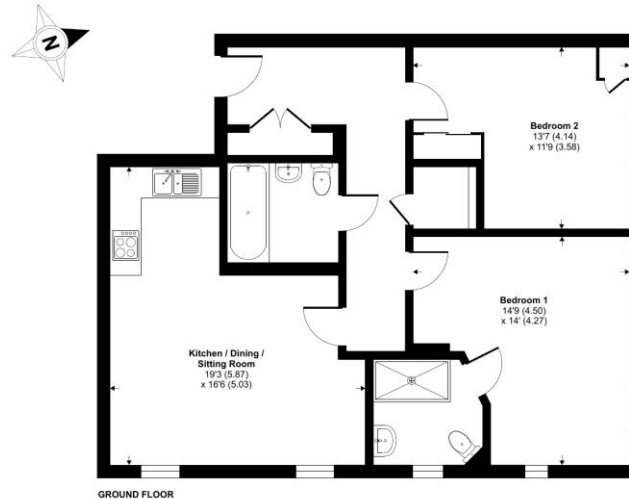
For sat nav RG14 6EG. There is a board to identify the building.

What Three Words/// scales.busy.salon

Ireland Drive, Newbury, RG14

Approximate Area = 848 sq ft / 78.7 sq m

For identification only - Not to scale



GROUND FLOOR

 RICS Certified Property Measurer
Floor plan produced in accordance with RICS Property Measurement Standards incorporating International Property Measurement Standards (IPMS2 Residential). © nichecom 2023.
Produced for Winkworth REF: 953897 



Newbury Office

43 Northbrook Street, Newbury, Berkshire RG14 1DT
01635 552552 | newbury@winkworth.co.uk

winkworth.co.uk/newbury

Winkworth

See things differently.