



CHEVENING ROAD, NW6
£2,950 PER MONTH UNFURNISHED

**ONE OF A KIND, SLIT LEVEL APARTMENT
LOCATED MOMENTS FROM QUEENS PARK.**

Kensal Rise & Queens Park | 0208 960 4947 | kensalrise@winkworth.co.uk

Winkworth

for every step...

[winkworth.co.uk](https://www.winkworth.co.uk)



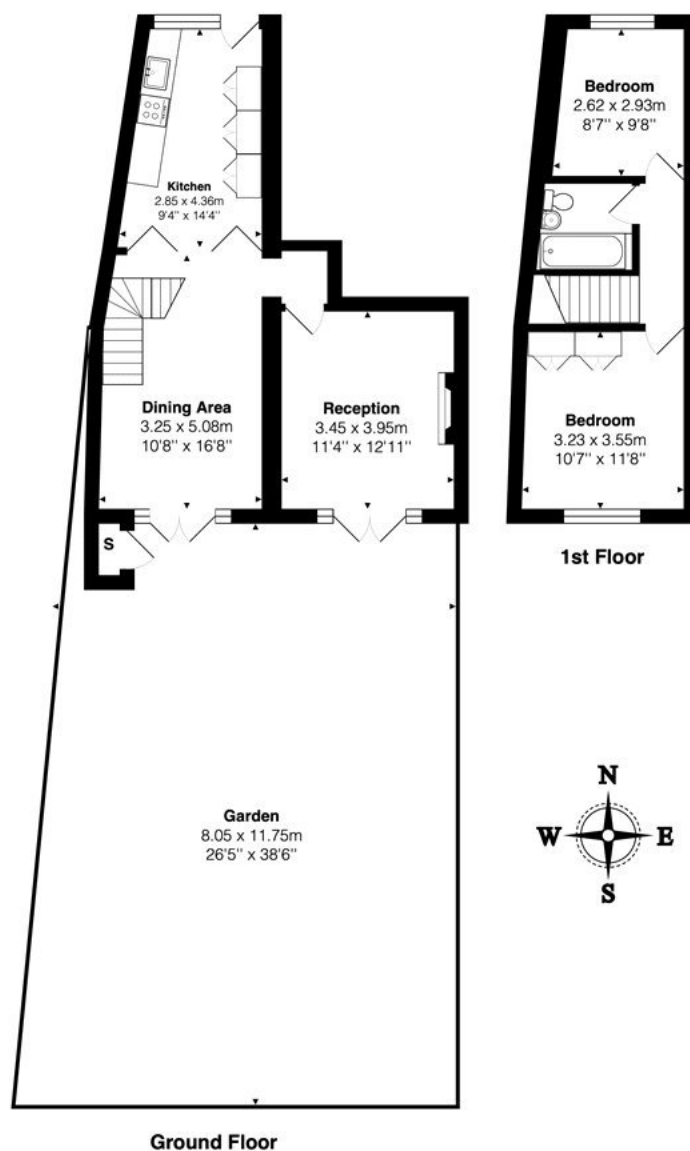
DESCRIPTION:

Winkworth are delighted to offer this spacious and light, split level apartment which is arranged over two floors, (lower ground and first floor) with its own private entrance and secluded private garden split with both a large decking and grass area.

The property comprises: a large living room with bi-folding doors to the garden, fully equipped kitchen with ample storage, washing machine and dishwasher, full height dividing doors onto the spacious dining area which also opens onto the private garden.

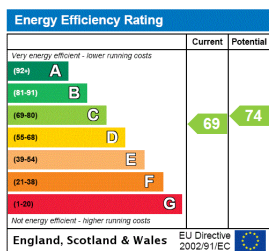
Upstairs there are two good size bedrooms, one with ceiling height wardrobes as well as a family bathroom between the rooms with skylight allowing natural light to flood into the room.





Total Area: 72.7 m² ... 783 ft² (excluding garden)
All measurements are approximate and for display purposes only

This floorplan is for illustration purposes only and is not to scale. The position and size of doors, windows, appliances and other features are approximate.



Deposit: 5 weeks rent

Holding Deposit: 1 weeks rent

Council Tax Band: D

Where no figures are shown, we have been unable to ascertain the information. All figures that are shown were correct at the time of printing.

Winkworth

Kensal Rise & Queens Park | 0208 960 4947 | kensalrise@winkworth.co.uk

for every step...

winkworth.co.uk

Winkworth wishes to inform prospective buyers and tenants that these particulars are a guide and act as information only. All our details are given in good faith and believed to be correct at the time of printing but they don't form part of an offer or contract. No Winkworth employee has authority to make or give any representation or warranty in relation to this property. All fixtures and fittings, whether fitted or not are deemed removable by the vendor unless stated otherwise and room sizes are measured between internal wall surfaces, including furnishings.