



Joseph Huntley Walk, Reading, Berkshire, RG1 3NP

£1,695 per month *Unfurnished*

2  1  1 

Modern two bedroom apartment located on the third floor within the popular Huntley Wharf development by Berkeley Homes. The property comprises spacious living room which is open plan to the kitchen with integrated Bosch appliances, balcony overlooking the Kennet & Avon Canal, two double bedrooms (one with built in wardrobes) and a stunning four piece bathroom. Further benefits include on site concierge (seven days a week) and use of the communal gardens. Available now. Unfurnished.

KEY FEATURES

- Two bedroom apartment
- Third floor with lift access
- Balcony with river views
- Town centre location
- Council tax band D
- No parking
- Available now



Reading

0118 4022 300 | reading@winkworth.co.uk

Winkworth

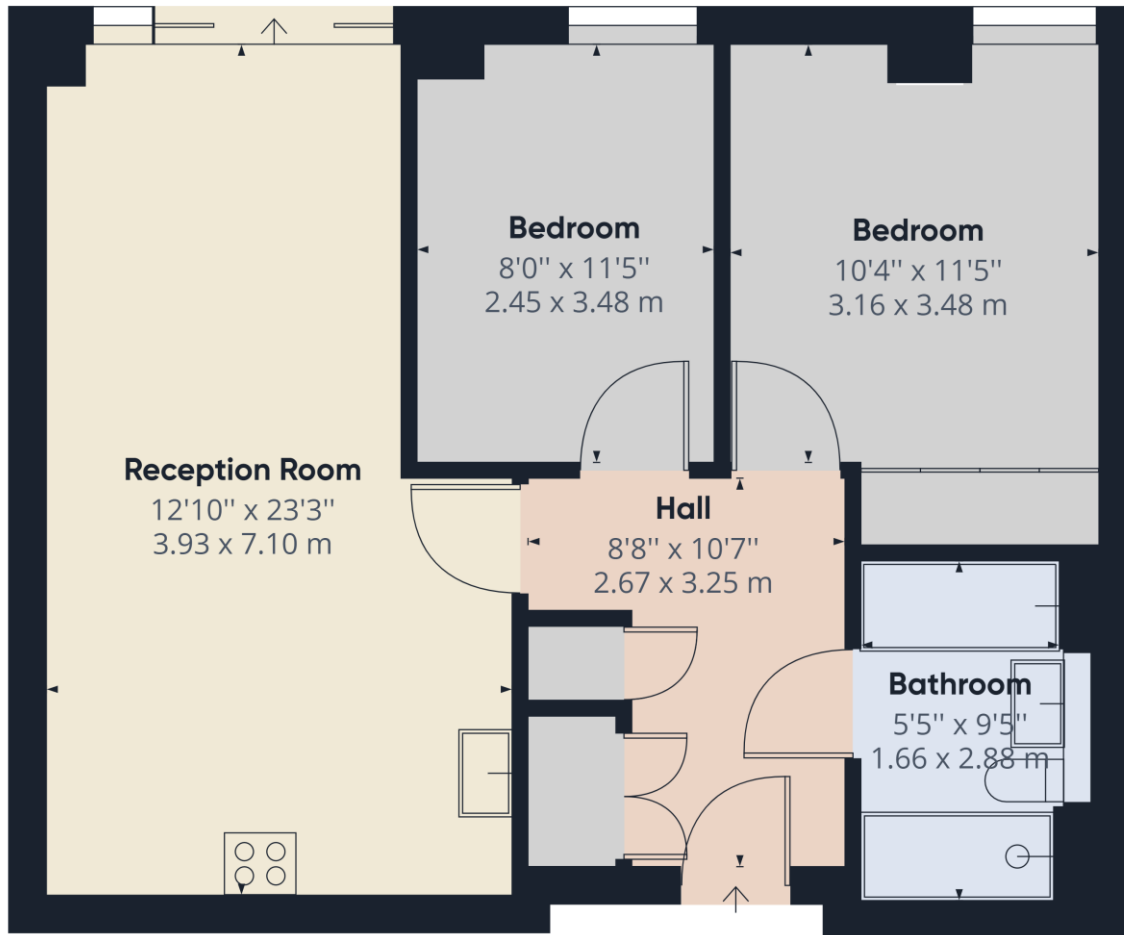
for every step...





MATERIAL INFO

Deposit: £1,955.77
Holding Deposit: £391.15
Council Tax Band: D
EPC rating: B

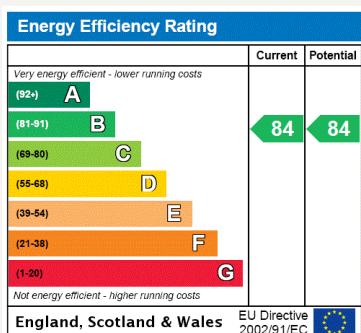


Approximate total area⁽¹⁾
644.98 ft²
59.92 m²

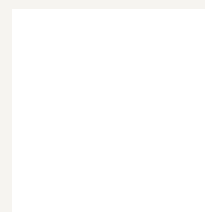
(1) Excluding balconies and terraces

While every attempt has been made to ensure accuracy, all measurements are approximate, not to scale. This floor plan is for illustrative purposes only.

GIRAFFE360



For more information, scan the QR code or visit the link below



<https://www.winkworth.co.uk/rent/property/REA220336>

Where no figures are shown, we have been unable to ascertain the information. All figures that are shown were correct at the time of printing.

Reading

0118 4022 300 | reading@winkworth.co.uk

Winkworth

for every step...

Winkworth wishes to inform prospective buyers and tenants that these particulars are a guide and act as information only. All our details are given in good faith and believed to be correct at the time of printing but they don't form part of an offer or contract. No Winkworth employee has authority to make or give any representation or warranty in relation to this property. All fixtures and fittings, whether fitted or not are deemed removable by the vendor unless stated otherwise and room sizes are measured between internal wall surfaces, including furnishings.