

TOWNSHEND ROAD, NW8 £2,495,000 FREEHOLD

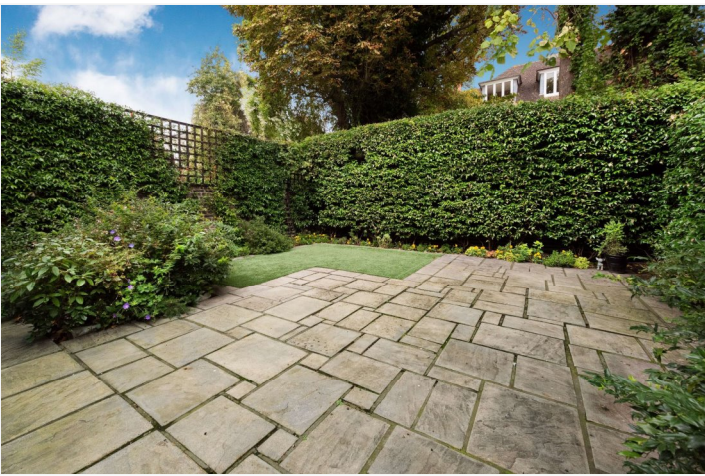
Situated behind a gated entrance lies this deceptively spacious two bedroom house adjacent to Regent's Park. The house comprises 1,510 sqft/145 sqm and benefits from a 21ft reception room that overlooks the rear garden. Other benefits include an integral garage and a galley kitchen leading into a conservatory. The house also benefits from a first floor pull down ladder to reveal a 220 sqft/20 sqm loft room with windows and re-enforced flooring that is currently used as a gym. With the addition of a permanent staircase, the overall size of the house increases to 1,730 sqft. Townshend Road is located within 0.2 miles of the shopping and transport facilities of St John's Wood High Street.

Principal Bedroom With En Suite Bathroom | En Suite Has Jacuzzi Bath & Steam Shower |
Second Bedroom With En Suite Shower Room | Guest WC | Reception Room | Kitchen Leading
To Conservatory | Loft Room Currently Used As A Gym | Rear Garden | Garage | Freehold

Winkworth

for every step...

winkworth.co.uk/st-johns-wood

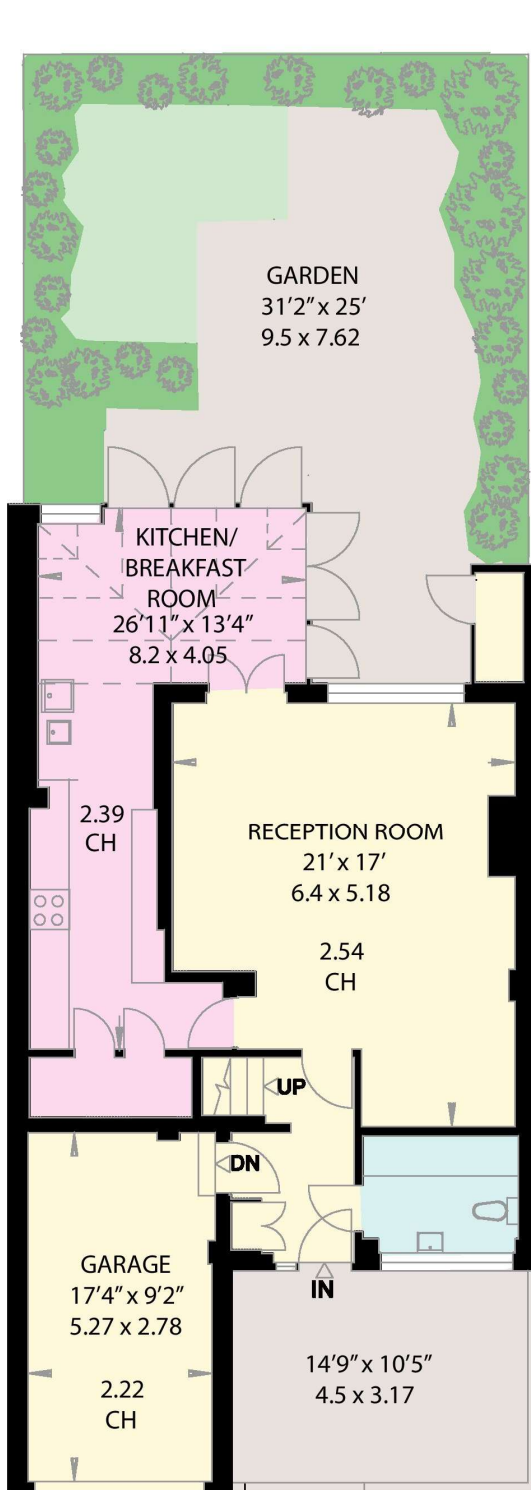




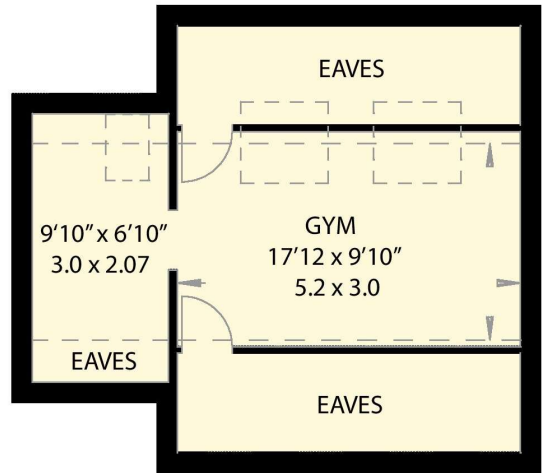
TOWNSHEND ROAD
LONDON NW8

Gross Internal Area = 1510 sq feet/ 140.2 sq metres
(Excluding Second Floor)

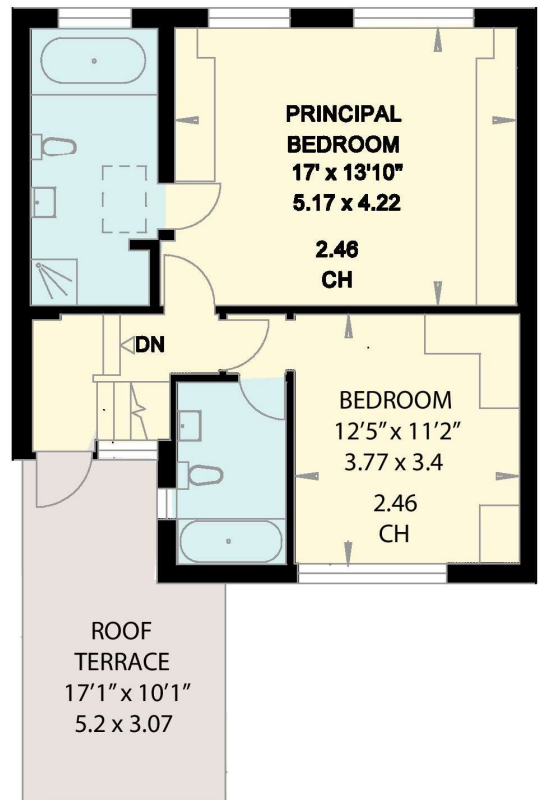
Second Floor = 220 sq feet/ 20.4 sq metres
(Excluding Eaves)



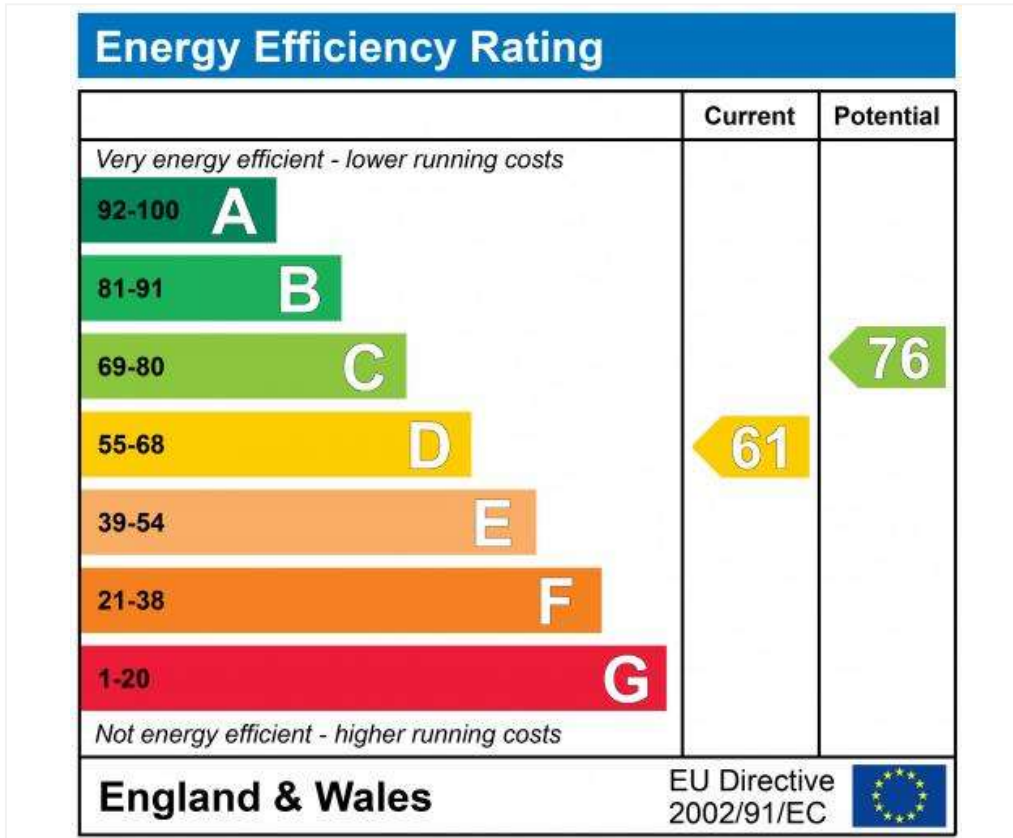
GROUND FLOOR



SECOND FLOOR



FIRST FLOOR



Tenure: Freehold

Council Tax Band: G

Where no figures are shown, we have been unable to ascertain the information. All figures that are shown were correct at the time of printing.

Where no figures are shown, we have been unable to ascertain the information. All figures that are shown were correct at the time of printing. These particulars are not an offer or contract, nor part of one. You should not rely on statements by Winkworth in the particulars or by word of mouth or in writing "information" as being factually accurate about the property, its condition or its value. Winkworth does not have any authority to make any representations about the property, and accordingly any information given is entirely without responsibility on the part of the agents, seller(s) or lessor(s). These particulars are prepared on the basis of the information supplied by our client and are a rough guide for information only. The photographs show only certain parts of the property. We are not able to check all of the information and therefore are unable to guarantee accuracy. All interested parties are therefore advised to undertake all necessary inspections and checks that they deem appropriate. Where displayed, the square footage is taken from the floor plans, which are created by an independent supplier. These measurements are approximate and included for illustrative purposes only. The measurements may vary. Winkworth does not make any representation as to the accuracy of these measurements and you should seek to verify them for yourself. Winkworth accept no liability for any loss you may suffer if you rely on these measurements. All fixtures and fittings, whether fitted or not are deemed removable by the vendor unless stated. Any reference to alterations to, or use of, any part of the property does not mean that any necessary planning, building regulations or other consent has been obtained. Amenities and appliances have not been tested

St John's Wood | 103-104 St. Johns Wood Terrace, London, NW8 6PL
020 7586 7001 |



for every step...

winkworth.co.uk/st-johns-wood

Winkworth wishes to inform prospective buyers and tenants that these particulars are a guide and act as information only. All our details are given in good faith and believed to be correct at the time of printing but they don't form part of an offer or contract. No Winkworth employee has authority to make or give any representation or warranty in relation to this property. All fixtures and fittings, whether fitted or not are deemed removable by the vendor unless stated otherwise and room sizes are measured between internal wall surfaces, including furnishings.