



BAILEY LANE, SALISBURY, WILTSHIRE, SP2 0ER
£340,000 FREEHOLD

Winkworth



BAILEY LANE, SALISBURY, WILTSHIRE, SP2 0FR

Immaculately presented, end terrace three-bedroom home in Bailey Lane with enclosed rear garden and driveway parking. EPC: awaited.

A most attractive, modern, end terrace three-bedroom house within the highly sought-after Redrow development, on the outskirts of the historic market town of Wilton. The delightfully maintained accommodation over two floors, with double glazing and gas fired central heating, includes an entrance lobby leading to the sitting room with cloakroom off and thence to a well fitted kitchen/dining room. Double doors then lead out to the landscaped garden. Upstairs, off a landing, there is a principal bedroom with en-suite shower room, two further bedrooms and the family bathroom. Outside and being end terrace there is a private side drive with parking for two cars and a gated access to the lovely garden.

AT A GLANCE

Sitting room
Kitchen/breakfast room
W.C

Three double bedrooms
Family Bathroom
Ensuite shower room

Garden
Driveway parking



LOCATION

The development lies about half a mile from the centre of Wilton. Rich in history, including being the ancient capital of Wessex, the town features Wilton House, a jewel in the historic houses in this country, and the seat of the Earls of Pembroke. There is a bustling, weekly market in the central Square and an eclectic mix of shops and local facilities which include primary and nursery schools, churches including the wonderful Italianate C of E Parish church, a selection of eateries and pubs and both doctors' and dental practices. There are play parks, tennis courts and a riding stable along with a variety of opportunities for outdoor pursuits and for dog walkers in various directions including the beautiful Grovely Woods. A regular bus service from the Square is also available into Salisbury. The cathedral city offers a wide range of shops and supermarkets, restaurants and pubs, various sports clubs and two golf courses as well as the Five Rivers leisure centre. There are two theatres and two multi-screen cinemas and the city also has a mainline rail station with services to London (Waterloo) and the West Country.

DIRECTIONS

What3Words - [donation.bonfires.anchorman](https://www.what3words.com/donation.bonfires.anchorman)

Leave Salisbury along the A36 Wilton Road passing the South Wilts cricket ground and hockey club, the nine hole golf club with driving range and, beyond the traffic lights, the Wilton House Garden Centre. At the roundabout take the third exit onto The Avenue then take the second right turn into Bailey Lane. Continue for about 100 yards and the property will be found on the left as indicated by the Winkworth For Sale sign.

Council Tax Band D

EPC Band awaited

Gas central heating and double glazing

Mains drainage

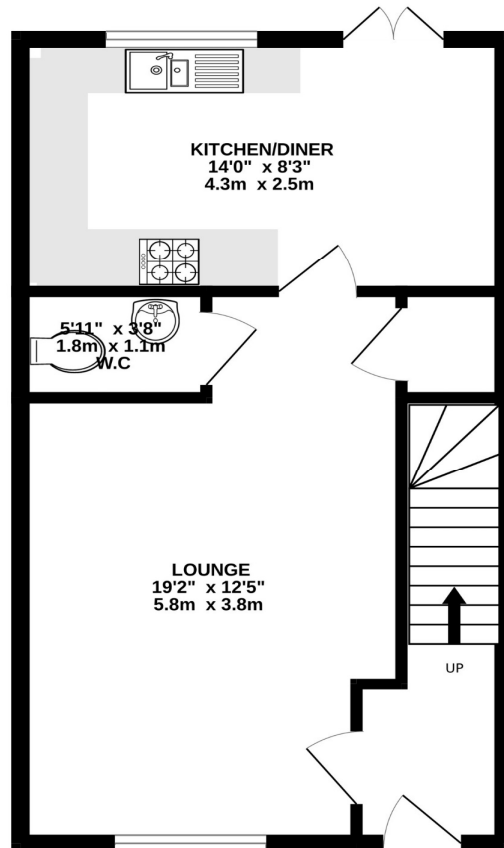
Ultrafast Broadband available.

Mobile coverage inside likely with EE, O2 and Vodafone.

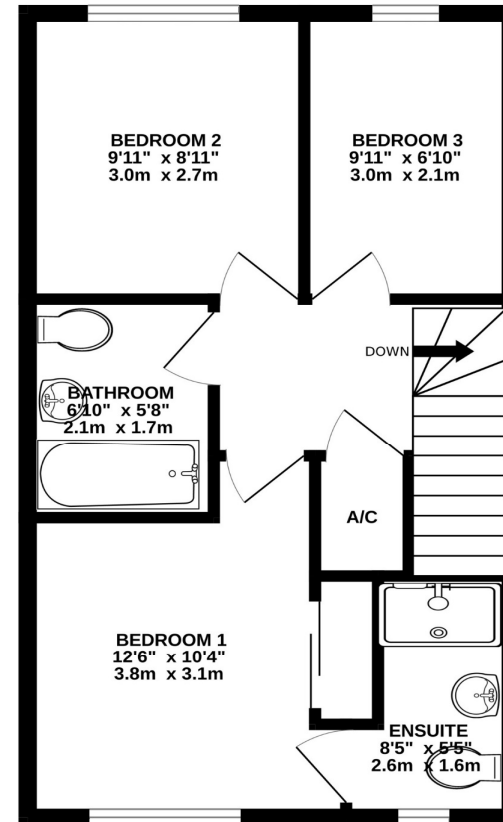
Mobile coverage outside likely with EE, Three, O2 and Vodafone.



GROUND FLOOR



1ST FLOOR



Whilst every attempt has been made to ensure the accuracy of the floorplan contained here, measurements of doors, windows, rooms and any other items are approximate and no responsibility is taken for any error, omission or mis-statement. This plan is for illustrative purposes only and should be used as such by any prospective purchaser. The services, systems and appliances shown have not been tested and no guarantee as to their operability or efficiency can be given.
Made with Metropix ©2025

Salisbury | 01722 443 000 | salisbury@winkworth.co.uk

winkworth.co.uk

Winkworth wishes to inform prospective buyers and tenants that these particulars are a guide and act as information only. All our details are given in good faith and believed to be correct at the time of printing but they don't form part of an offer or contract. No Winkworth employee has authority to make or give any representation or warranty in relation to this property. All fixtures and fittings, whether fitted or not are deemed removable by the vendor unless stated otherwise and room sizes are measured between internal wall surfaces, including furnishings.

Winkworth