



Beautiful Two Bedroom Apartment in the Centre of Pewsey

Guide Price £195,000

Winkworth



MARKET PLACE, PEWSEY, SN9 5AA

This exceptionally large two bedroom apartment in the centre of Pewsey, is for sale with no onward chain.

Winkworth are delighted to offer this newly converted, spacious, two double bedroom apartment right in the centre of Pewsey.

This delightful Georgian Grade II listed building has been converted into three apartments. Occupying the first floor, Flat 1 offers a large kitchen/diner with modern fitted kitchen, feature fireplace and large floor to ceiling bay window. The large lounge has one exposed brick wall and a large bay window. There are two double bedrooms at the rear and a shower room.

The apartment has been designed to a high specification and also includes, modern high pressure electric boiler and modern glass panel heating.

Externally there is Bike Storage area for the three apartments.

Being right in the heart of Pewsey you are within walking distance of all the amenities and the train station providing access into London Paddington and Waterloo.

Please note there will be some variances to the pictures as these are from Apartment two.

AT A GLANCE

- . Converted Georgian Grade II Listed Apartment
- . Two Double Bedrooms
- . Large Kitchen/Diner with Feature Fireplace
- . Large Lounge with Bay Window
- . Bathroom
- . Communal Garden Area/Bike Store
- . 999 Year Lease (from 2021)

SERVICES: Mains Water, drainage and electric

SERVICE CHARGE:

To be confirmed

No ground Rent



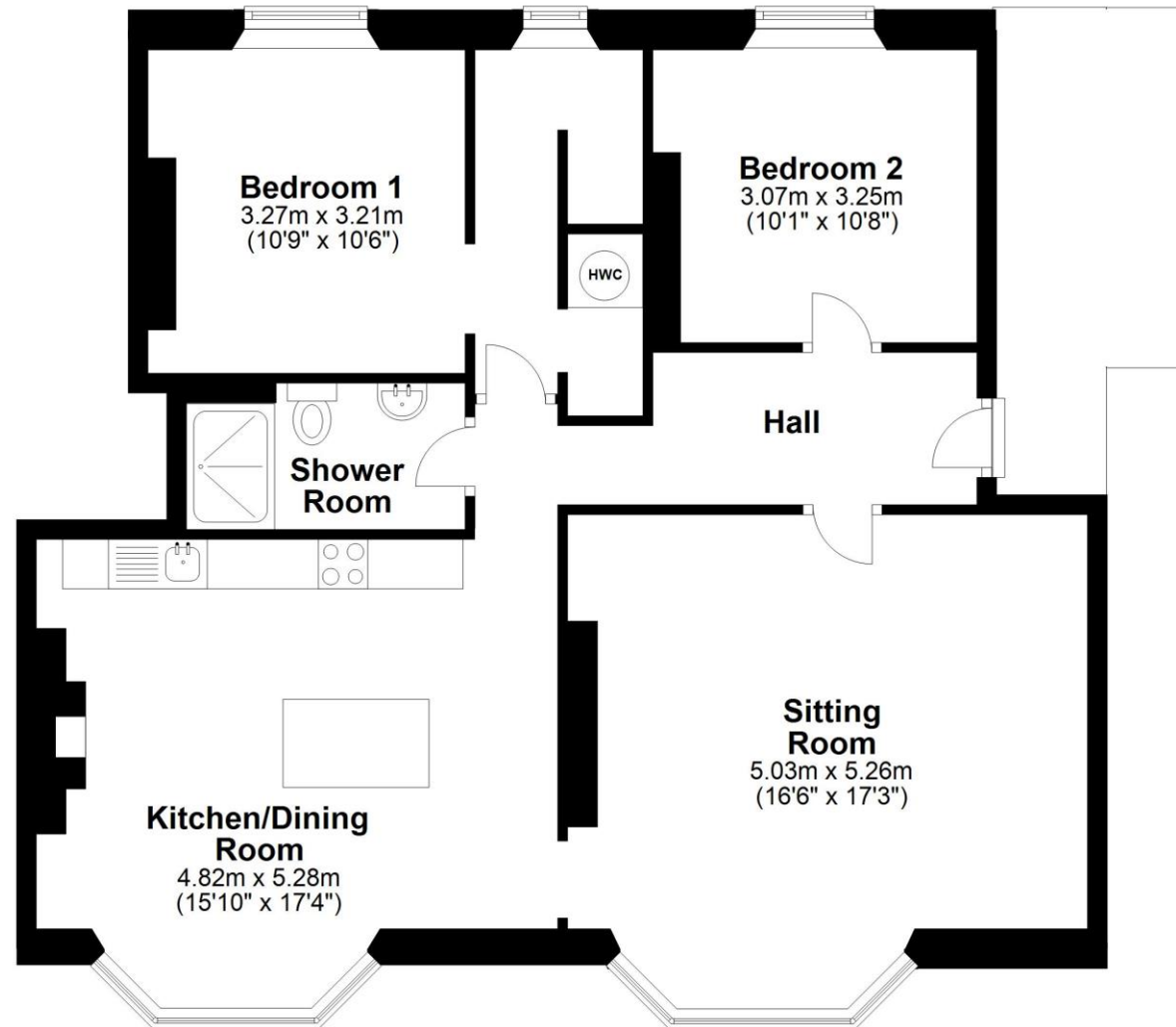
LOCATION

Pewsey is a vibrant community in the Wiltshire Downs, it is designated as being of 'Outstanding Natural Beauty' and comprises a rich agricultural valley surrounded by rolling downland. It offers a wide range of independent shops and amenities with secondary and primary schools, village hall, fire station, GPs, bank, electrical stores, Co-op supermarket, florists, cafes and butcher to name only a few. On the edge of this popular town is a railway station with services to London (Paddington 65mins approx.) and the West. Nearby Marlborough (7 miles) and Devizes (12 miles) offer a wide range of other amenities.



First Floor

Approx. 85.9 sq. metres (925.1 sq. feet)



Total area: approx. 85.9 sq. metres (925.1 sq. feet)

Marlborough | 01672 552777 | marlborough@winkworth.co.uk

winkworth.co.uk

Winkworth wishes to inform prospective buyers and tenants that these particulars are a guide and act as information only. All our details are given in good faith and believed to be correct at the time of printing but they don't form part of an offer or contract. No Winkworth employee has authority to make or give any representation or warranty in relation to this property. All fixtures and fittings, whether fitted or not are deemed removable by the vendor unless stated otherwise and room sizes are measured between internal wall surfaces, including furnishings.

Winkworth