



Weatherbury, London, W2

£695 per week (£3,011.66 PCM) *Unfurnished*



An immaculate and beautifully presented two double bedroom maisonette with a private garden in this purpose-built block just off Talbot Road. The property offers a lovely reception room with open plan kitchen, two spacious double bedrooms, immaculate bathroom, and separate loo. The property is offered unfurnished and heating and hot water included within the rent.



Notting Hill Lettings

0207 727 3227 | nottinghill@winkworth.co.uk

Winkworth

for every step...



Talbot Road runs east west through Notting Hill, parallel and to the north of Westbourne Grove. The property is located on the stretch between Ledbury Road and Chepstow Road with some of Notting Hill's most popular boutiques, bars and restaurants just moments away.

Utilities:

Electricity – Mains

Water – Mains

Sewerage – Mains

Heating – Gas

Broadband <https://checker.ofcom.org.uk/en-gb/broadband-coverage>

Mobile Coverage <https://checker.ofcom.org.uk/en-gb/mobile-coverage>

MATERIAL INFO

Deposit: £3,475

Holding Deposit: £695

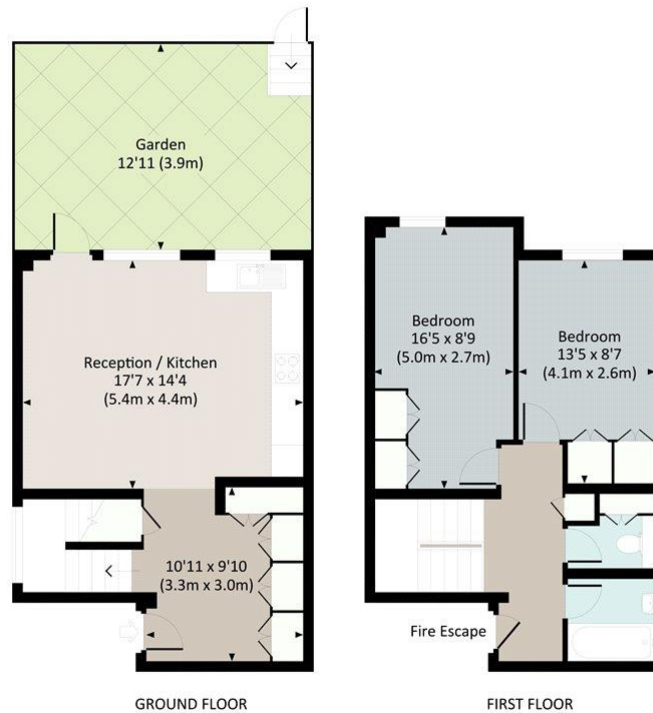
Council Tax Band: D (Westminster)



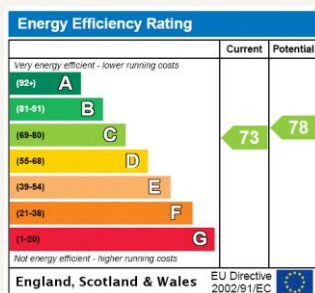


TALBOT ROAD, W2

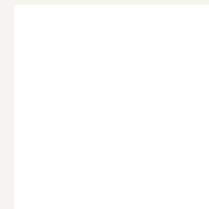
Approx. gross internal area
836 Sq Ft. / 77.7 Sq M.



All measurements have been made in accordance with RICS Code of Measuring Practice which are approximate only and only for illustrative purposes. For the avoidance of doubt, Dowling Jones Design shall not be liable for any reliance on these measurements. © 2016 www.dowlingjones.com 020 7632 9933



For more information, scan the QR code or visit the link below



<https://www.winkworth.co.uk/rent/property/NHL160034>

Where no figures are shown, we have been unable to ascertain the information. All figures that are shown were correct at the time of printing.

Notting Hill Lettings

0207 727 3227 | nottinghill@winkworth.co.uk

Winkworth

for every step...

Winkworth wishes to inform prospective buyers and tenants that these particulars are a guide and act as information only. All our details are given in good faith and believed to be correct at the time of printing but they don't form part of an offer or contract. No Winkworth employee has authority to make or give any representation or warranty in relation to this property. All fixtures and fittings, whether fitted or not are deemed removable by the vendor unless stated otherwise and room sizes are measured between internal wall surfaces, including furnishings.