



- VICTORIAN PERIOD PROPERTY
- LONG LEASE
- PRIVATE GARDEN
- PERIOD FEATURES
- BRIGHT & AIRY
- EXCELLENT LOCATION & INVESTMENT POTENTIAL

SECOND AVENUE, HENDON, LONDON, NW4
OFFERS IN EXCESS OF £340,000 LEASEHOLD

A RARE OPPORTUNITY: STUNNING TWO-BED MAISONETTE WITH PERIOD FEATURES AND A SECLUDED GARDEN

Hendon | 020 8202 1031 | hendon@winkworth.co.uk

Winkworth

for every step...

winkworth.co.uk



This charming two-bedroom Victorian period raised ground floor maisonette offers a blend of classic character and modern convenience. The property boasts a long lease and its own private entrance, providing a sense of exclusivity. Upon entering, you are greeted by a spacious entrance hallway. The well-proportioned Kitchen/Living Area features a striking fireplace and a beautiful bay window, creating a bright and inviting space for both relaxing and dining. The kitchen is integrated into this room, offering a sociable open-plan layout. The property has two double bedrooms. The main bedroom is generously sized and includes an original fireplace and direct access to a private garden, providing a tranquil escape. The second bedroom is a comfortable space that can be used as a guest room, study, or children's room. The family bathroom is equipped with both a full-size bath and a separate walk-in shower.



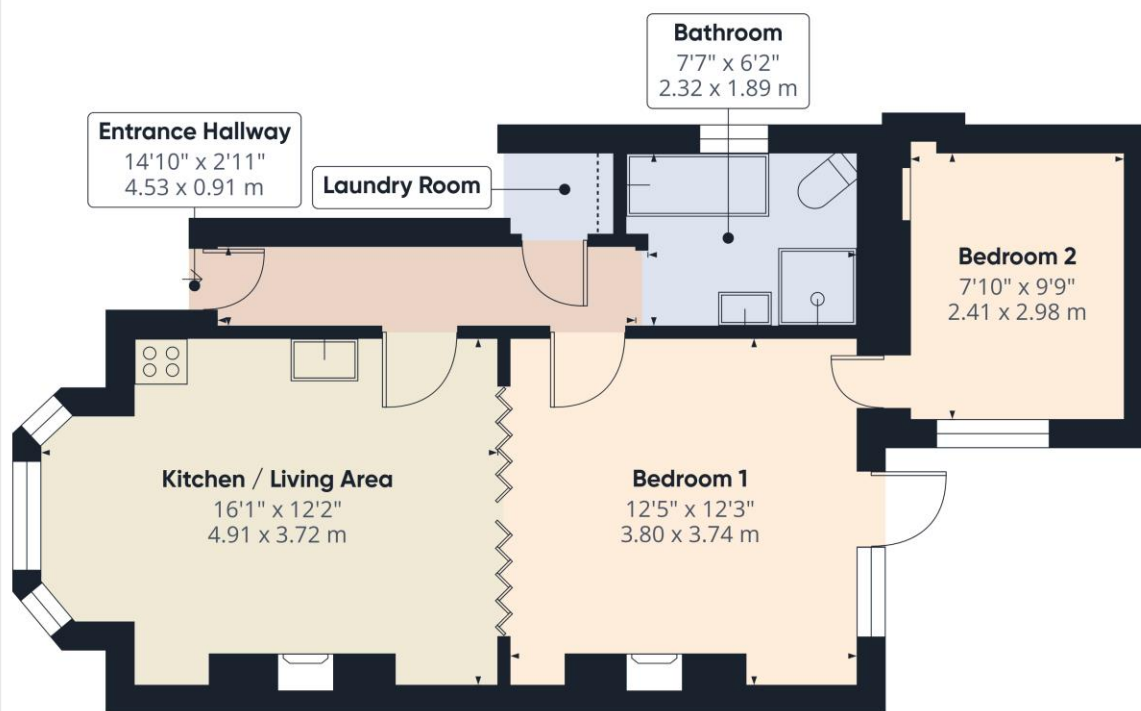
Winkworth

for every step...



Winkworth

for every step...



Ground Floor Building 1

Approximate total area⁽¹⁾496 ft²
46 m²

(1) Excluding balconies and terraces

Reduced headroom
..... Below 5 ft/1.5 m

Calculations reference the RICS IPMS 3C standard. Measurements are approximate and not to scale. This floor plan is intended for illustration only.

GIRAFFE 360

This floorplan is for illustration purposes only and is not to scale. The position and size of doors, windows, appliances and other features are approximate.



Hendon | 020 8202 1031 | hendon@winkworth.co.uk

Tenure: Leasehold**Term:** 109 year and 0 months**Service Charge:** Approx £1200 per annum**Ground Rent:** Approx £ 50 Annually (subject to increase)**Council Tax Band:** C

Where no figures are shown, we have been unable to ascertain the information. All figures that are shown were correct at the time of printing.

Winkworth

for every step...

winkworth.co.uk

Winkworth wishes to inform prospective buyers and tenants that these particulars are a guide and act as information only. All our details are given in good faith and believed to be correct at the time of printing but they don't form part of an offer or contract. No Winkworth employee has authority to make or give any representation or warranty in relation to this property. All fixtures and fittings, whether fitted or not are deemed removable by the vendor unless stated otherwise and room sizes are measured between internal wall surfaces, including furnishings.