



DRAYTON ROAD, BERKSHIRE, RG30 2PH
£2,550 PER MONTH UNFURNISHED

NEWLY REFURBISHED FOUR BEDROOM SEMI-DETACHED HOUSE. AVAILABLE NOW.

Reading | 0118 4022 300 | reading@winkworth.co.uk

Winkworth

for every step...

winkworth.co.uk



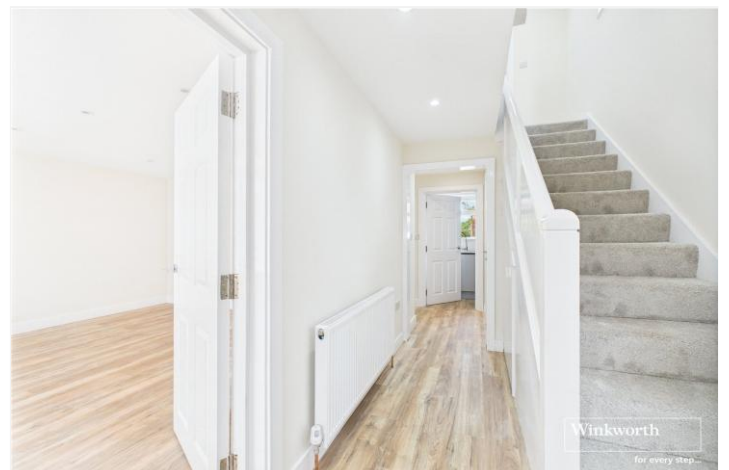
DESCRIPTION:

Newly refurbished four bedroom semi-detached house located to the West of Reading town centre close to local amenities and within walking distance of Prospect Park. Accommodation is split over three floors and comprises modern kitchen/diner with bi-folding doors opening out onto the private rear garden, utility room, cloakroom and reception room on the ground floor. Two double bedrooms, en suite shower room to one bedroom and a further three piece bathroom occupy the first floor. Two further bedrooms with one benefitting from an en suite shower room are located on the top floor. Driveway parking and a garage are included. Available now. Unfurnished.

*This property is suitable for x4 sharers.

AT A GLANCE

- Four bedroom semi-detached house
- Excellent condition throughout
- Three bathrooms
- Off road parking & garage
- Suitable for x4 sharers
- Available now
- Unfurnished









Winkworth wishes to inform prospective buyers and tenants that these particulars are a guide and act as information only. All our details are given in good faith and believed to be correct at the time of printing but they don't form part of an offer or contract. No Winkworth employee has authority to make or give any representation or warranty in relation to this property. All fixtures and fittings, whether fitted or not are deemed removable by the vendor unless stated otherwise and room sizes are measured between internal wall surfaces, including furnishings.