

AYLESTONE AVENUE, NW6  
**£3,000 PER MONTH UNFURNISHED**

## FULLY REFURBISHED TWO DOUBLE BEDROOM GROUND FLOOR GARDEN APARTMENT WITH ALLOCATED OFF-STREET PARKING.

Kensal Rise & Queens Park | 0208 960 4947 | [kensalrise@winkworth.co.uk](mailto:kensalrise@winkworth.co.uk)

**Winkworth**

for every step...

[winkworth.co.uk](http://winkworth.co.uk)



## DESCRIPTION:

Winkworth are delighted to offer this newly refurbished apartment, with its own private gated entrance and secluded patio garden, to the lettings market.

Upon entering the apartment there is a spectacular open plan kitchen reception room with feature fireplace and crittall style patio doors. The kitchen is fully fitted with brand new appliances and a breakfast bar perfect for entertaining.

Beyond the living space there are two spacious double bedrooms with high ceilings and plenty of storage in the larger of the bedrooms. Between the two bedrooms sits a brand new shower room with vanity unit and stainless steel finishing.

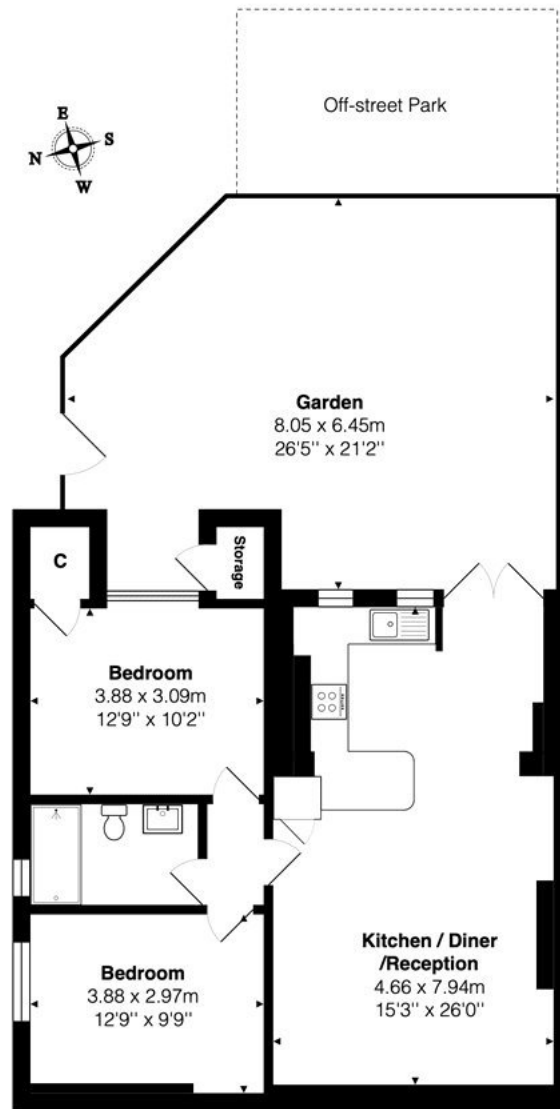
Additional features include hardwood flooring in the kitchen / reception room, newly laid carpets in the bedrooms, a utility cupboard with separate washing machine and dryer as well as bespoke blinds having been fitted in the bedrooms.

The apartment also comes with allocated off-street parking for one car.

Offered unfurnished and available early October 2025



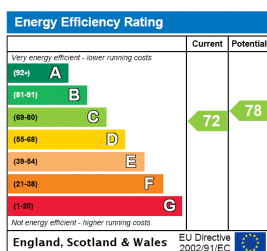




**Ground Floor**

Total Area: 71.7 m<sup>2</sup> ... 771 ft<sup>2</sup> (excluding garden)  
All measurements are approximate and for display purposes only

This floorplan is for illustration purposes only and is not to scale. The position and size of doors, windows, appliances and other features are approximate.



**Deposit:** 5 weeks rent

**Holding Deposit:** 1 weeks rent

**Council Tax Band:** E

Where no figures are shown, we have been unable to ascertain the information. All figures that are shown were correct at the time of printing.

**Winkworth**

Kensal Rise & Queens Park | 0208 960 4947 | kensalrise@winkworth.co.uk

for every step...

[winkworth.co.uk](http://winkworth.co.uk)

Winkworth wishes to inform prospective buyers and tenants that these particulars are a guide and act as information only. All our details are given in good faith and believed to be correct at the time of printing but they don't form part of an offer or contract. No Winkworth employee has authority to make or give any representation or warranty in relation to this property. All fixtures and fittings, whether fitted or not are deemed removable by the vendor unless stated otherwise and room sizes are measured between internal wall surfaces, including furnishings.