



The Dolls House, Toothill Road, Romsey SO51 9LN
Offers in Excess of £1,100,000

Winkworth



BEAUTIFUL HOME IN IDYLIC SETTING

The Dolls House enjoys a charming semi-rural setting on a quiet country lane, while remaining conveniently close to the historic market town of Romsey. Romsey offers a wide range of amenities, including two supermarkets, boutique shops, restaurants, cafés, and traditional pubs. The town also provides excellent facilities such as both state and independent schools, leisure centres, medical and dental practices, and reliable public transport via bus and rail. The larger towns of Southampton, Winchester, and Salisbury are all within easy commuting distance, and the beautiful New Forest is also easily accessible.

The Dolls House is an exceptional family residence that seamlessly combines space, style, and quality. With the appearance of a country cottage, the property surprises with its light-filled interiors and a sense of openness enhanced by vaulted ceilings. Thoughtfully designed and extended and finished to a high specification, this home offers well-balanced accommodation throughout. On the ground floor, you will find a spacious sitting room (with exposed oak beams, and a characterful log burner) an inviting space to welcome you into this lovely home. This leads through to a further snug, perfect for entertaining. The kitchen/breakfast room is a generous space, both stylish and practical, fitted with a comprehensive range of eye- and base-level units, complemented by generous countertop space. Its design thoughtfully echoes the cottage's character while providing modern convenience. A useful utility and separate cloakroom are easily accessed from the kitchen. On the first floor are four beautifully presented bedrooms, the master benefitting from an en-suite bathroom and a dressing room. The remaining bedrooms share use of a well-appointed family bathroom. Every room in The Dolls House has been beautifully decorated and styled creating a warm, elegant home.

The south-west facing rear garden is approaching 1.25 acres and is a true delight, surrounded by mature trees and hedges, exceptionally private and beautifully landscaped, featuring a spacious patio ideal for outdoor entertaining. To the front, a picturesque garden provides a charming introduction to the property. The front driveway offers off-road parking for two vehicles, whilst the rear driveway has multiple parking spaces. A useful workshop, accessed externally, is conveniently attached to the rear of the home. The garden includes a shed with power. There is also a summer house with light and power, whilst also a further greenhouse.

- Private septic tank
- Oil fired central heating
- Mains electricity & water
- Standard broadband available
- Council tax band 'G' - Test Valley Borough Council
- Vendors are suited









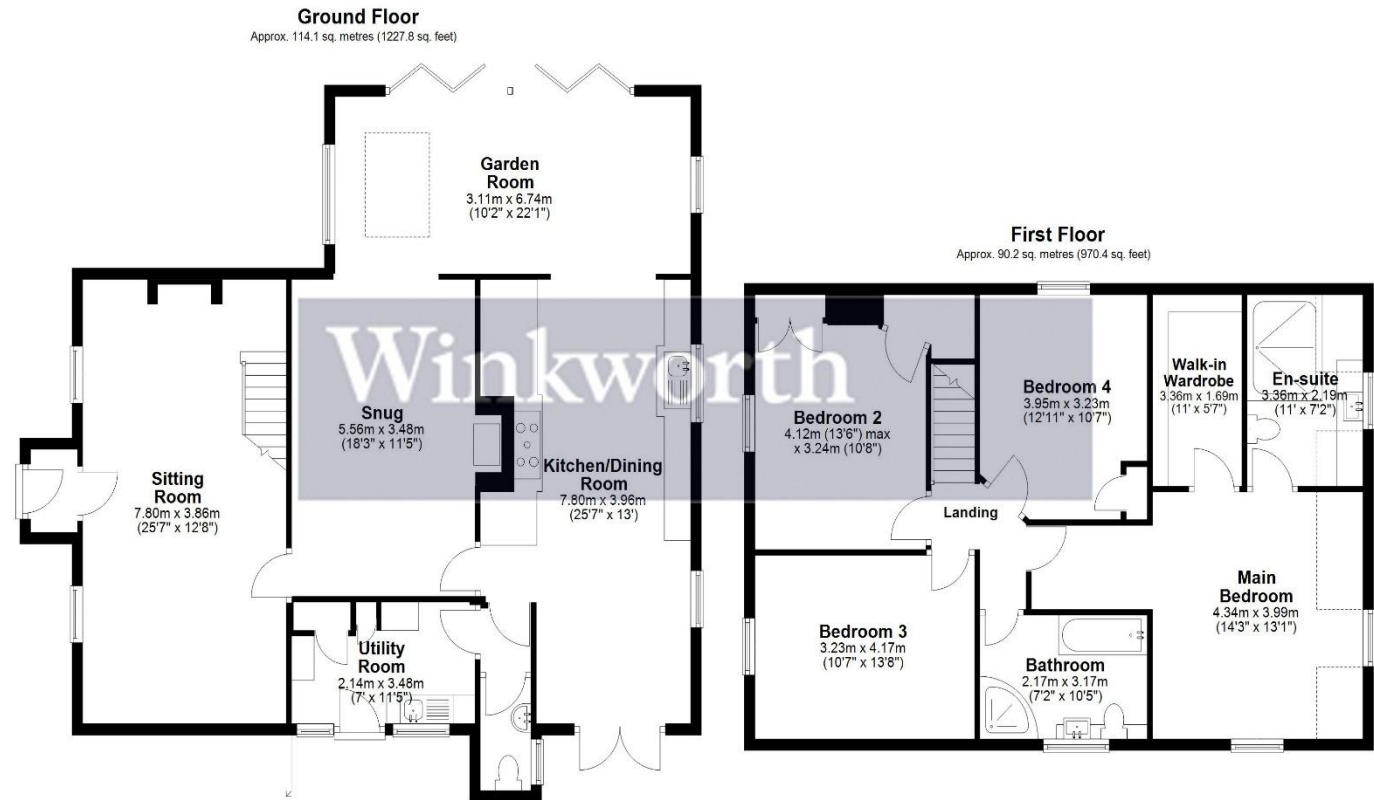
Winkworth

Address: The Dolls House, Toothill Road, Romsey, Hampshire SO51 9LN

Council Tax Band: 'G' Test Valley BC

EPC: 'E'

Tenure: Freehold



winkworth.co.uk/romsey

Winkworth Romsey

18 Market Place, Romsey, Hampshire, SO51 8NA
01794 511911 | romsey@winkworth.co.uk

winkworth.co.uk/romsey

Winkworth Winchester

2 Black Swan Buildings, Southgate Street,
Winchester, Hampshire, SO23 9DT
01962 866777 | winchester@winkworth.co.uk

Winkworth Mayfair & Country House Department

11 Berkeley Street, Mayfair, London, W1J 8DS
020 7871 0589 | countryhouse@winkworth.co.uk

Winkworth

See things differently