



WOLLATON HOUSE, BATCHELOR STREET, LONDON, N1
£400,000 SHARE OF FREEHOLD

**A BRIGHT, ONE BEDROOM APARTMENT SET
 ON THE GROUND FLOOR IN PRIME ANGEL,
 N1.**

Islington | 0207 354 2480 | islington@winkworth.co.uk

Winkworth

winkworth.co.uk

See things differently



DESCRIPTION:

A stunning, one double bedroom apartment positioned across the ground floor of this historic former school conversion. Benefitting from double height ceiling, the property offers a wonderful amount of natural light to pour through from large, west facing windows and double doors leading out to the communal gardens. The spacious open plan living room/kitchen creates the perfect entertaining space, while the good-sized bedroom is cleverly designed as a mezzanine level upstairs. The property is completed with a modern shower room and is offered to the market on a chain free basis.

Batchelor Street is perfectly located in the heart of Angel and is just moments from the restaurants, bars and shops on Upper Street as well as being within easy reach of the fashionable Granary Square at Kings Cross. A selection of fantastic transport options are at hand with Angel station on the Northern line a short distance away, whilst an array of bus routes provide effortless access across London. Further underground links can be easily accessed from Kings Cross whilst international links are facilitated from St Pancras.

Winkworth

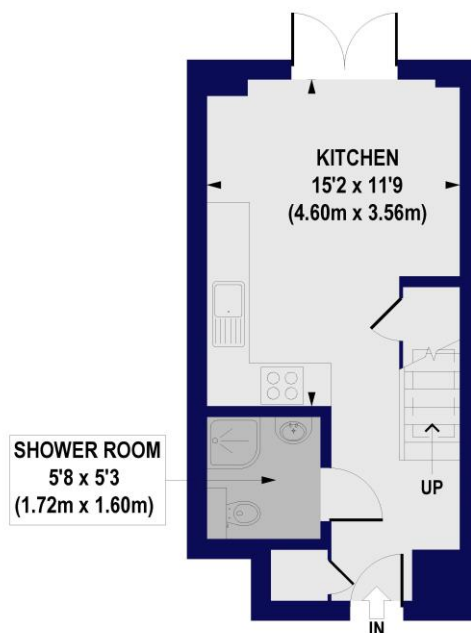


Winkworth

Wollaton House, Batchelor Street, N1
Approx. Gross Internal Floor Area 416 sq. ft / 38.67 sq. m



MEZZANINE
GROSS INTERNAL
FLOOR AREA 150 SQ FT

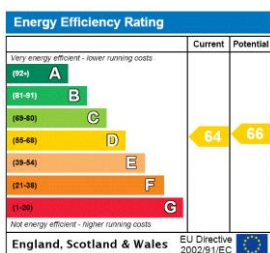


GROUND FLOOR
GROSS INTERNAL
FLOOR AREA 266 SQ FT

All measurements of walls, doors, windows, fittings and appliances, including their size and location, are shown as standard sizes and do not constitute any warranty or representation by the seller, their agent or CP Creative. Any intending purchaser must satisfy himself by inspection or otherwise as to the correctness of the information contained in these plans. This plan is for illustrative purposes only and should be used as such by any prospective purchasers.

Winkworth

This floorplan is for illustration purposes only and is not to scale. The position and size of doors, windows, appliances and other features are approximate.



Islington | 0207 354 2480 | islington@winkworth.co.uk

Winkworth

winkworth.co.uk

See things differently

Winkworth wishes to inform prospective buyers and tenants that these particulars are a guide and act as information only. All our details are given in good faith and believed to be correct at the time of printing but they don't form part of an offer or contract. No Winkworth employee has authority to make or give any representation or warranty in relation to this property. All fixtures and fittings, whether fitted or not are deemed removable by the vendor unless stated otherwise and room sizes are measured between internal wall surfaces, including furnishings.