



# Ashley Lodge

Frescade Crescent, Basingstoke RG21 3NE

## Description

A split level two bedroom top floor apartment is conveniently positioned within walking distance to the town centre and local amenities is available in June, subject to references.

The accommodation is laid out over two floors, downstairs you have a galley kitchen with a breakfast bar plus a good size living room. There is also a handy storage area under the stairs.

Upstairs there are two double bedrooms with built in wardrobes in both. Out on the landing there are two further storage cupboards so you are not short of options.

Externally, there are non allocated parking spaces.

Viewings are by appointment only.



**Winkworth**

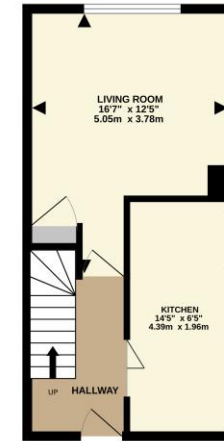
## Accommodation

Top floor split level apartment  
Two double bedrooms  
Living room  
Kitchen  
Non allocated parking spaces  
Unfurnished

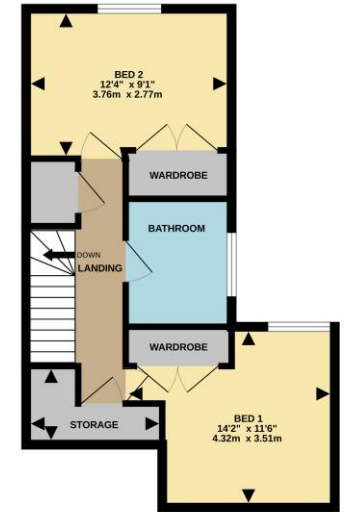
All details are given in good faith and are believed to be correct at time of printing. Winkworth give no representation as to their accuracy and potential purchasers or tenants must satisfy themselves by inspection or otherwise as to their correctness. No employee of Winkworth has authority to make or give any representation or warranty in relation to this property.

Energy Efficiency Rating		Current	Potential
Very energy efficient - lower running costs			
(92-100)	A		
(81-91)	B		
(69-80)	C		79
(55-68)	D		
(39-54)	E	54	
(21-38)	F		
(1-20)	G		
Not energy efficient - higher running costs			
England, Scotland & Wales		EU Directive 2002/91/EC	

GROUND FLOOR  
320 sq.ft. (29.6 sq.m.) approx.



1ST FLOOR  
414 sq.ft. (38.4 sq.m.) approx.



TOTAL FLOOR AREA: 734 sq.ft. (68.2 sq.m.) approx.  
While every attempt has been made to ensure the accuracy of the floorplan contained here, measurements of doors, windows, rooms and any other items are approximate and no responsibility is taken for any errors, omission or mis-statement. This plan is for illustrative purposes only and should be used as such by any prospective purchaser. The services, systems and appliances shown have not been tested and no guarantee as to their operability or efficiency can be given.  
Made with Measure (2021)



## Basingstoke Office

10B Church Street, Basingstoke, Hampshire, RG21 7QE  
01256 811730 | basingstoke@winkworth.co.uk

[winkworth.co.uk/Basingstoke](http://winkworth.co.uk/Basingstoke)

# Winkworth

See things differently.