



## Plaza Gardens, SW15

£2,750 per month *Part Furnished*



A stylish two bedroom, two bathroom apartment with a balcony and views of the London skyline in East Putney

### KEY FEATURES

- Two Double Bedrooms
- Two Bathrooms
- Balcony
- Resident's Gym
- Porter/Concierge
- Communal Roof Terrace



### Putney

020 8877 1000 | [putney@winkworth.co.uk](mailto:putney@winkworth.co.uk)

**Winkworth**

for every step...



This beautifully presented two bedroom, two bathroom apartment is finished to an extremely high standard throughout.

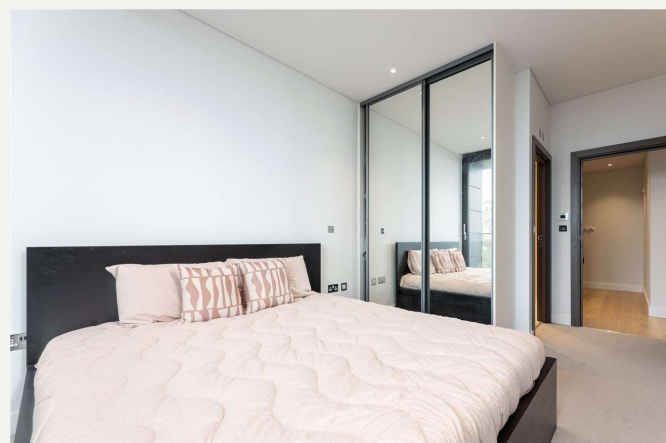
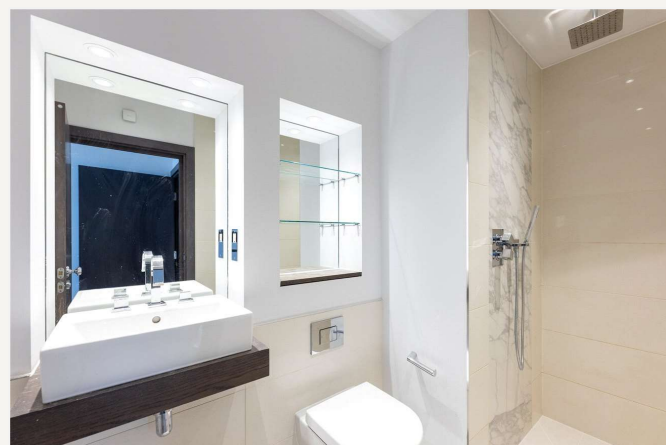
Situated on the third floor of a sought-after development in East Putney the master bedroom features built-in wardrobes, luxurious ensuite shower room and floor to ceiling windows with access to a balcony.

The second bedroom is also a good double; features floor to ceiling windows and is serviced by a spacious bathroom with bath and shower over.

The high-specification, open-plan kitchen/reception room includes integrated appliances, breakfast bar, wood flooring and an abundance of natural light throughout. The balcony can also be accessed from the living area with stunning views of the London skyline.

Plaza Gardens benefits from an onsite porter/concierge, landscaped communal gardens, communal roof terrace and resident's gym.

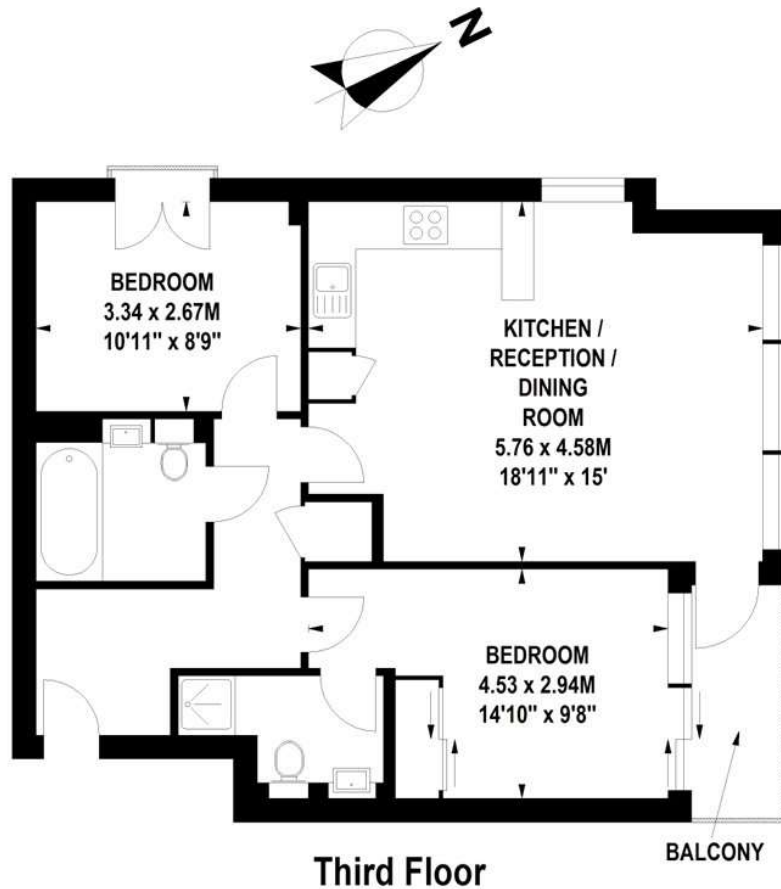
Capital House is conveniently located moments from East Putney station (District Line) and a short walk from Putney Mainline (South Western Rail). The amenities of Upper Richmond Road and Putney High Street are within easy reach. The River Thames and the green open spaces of Wandsworth Park are also nearby.





# Capital House, Plaza Gardens, SW15

Approximate Gross Internal Area 63 sq.m / 678 sq. ft



Floor Plan produced for WINKWORTH by Mays Floorplans © . Tel 020 3397 4594  
Illustration for identification purposes only, not to scale  
All measurements are maximum, and include wardrobes and window bays where applicable

For more information, scan the QR code or visit the link below



<https://www.winkworth.co.uk/rent/property/SOU250196>

Where no figures are shown, we have been unable to ascertain the information. All figures that are shown were correct at the time of printing.

**Putney**

020 8877 1000 | [putney@winkworth.co.uk](mailto:putney@winkworth.co.uk)

**Winkworth**

for every step...

Winkworth wishes to inform prospective buyers and tenants that these particulars are a guide and act as information only. All our details are given in good faith and believed to be correct at the time of printing but they don't form part of an offer or contract. No Winkworth employee has authority to make or give any representation or warranty in relation to this property. All fixtures and fittings, whether fitted or not are deemed removable by the vendor unless stated otherwise and room sizes are measured between internal wall surfaces, including furnishings.