



**GLOUCESTER ROAD, LONDON, N17**

**£390,000 SHARE OF FREEHOLD**

**A ONE BEDROOM FIRST FLOOR APARTMENT**





## AT A GLANCE

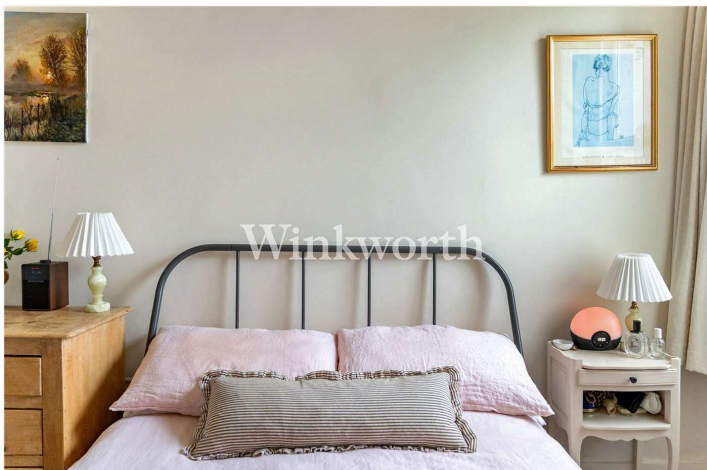
- 655 sq ft first floor Victorian apartment
- Bright reception with bay window and feature fireplace
- Large kitchen diner 17'10 x 10'3
- Quiet double bedroom to the rear
- Modern bathroom with full size bath
- Period details and natural light throughout
- Close to parks, cafés and excellent transport links
- Share Of Freehold

## DESCRIPTION

Set on the first floor of an attractive Victorian house, this charming one bedroom apartment offers 655 sq ft of bright, well balanced living space in a popular pocket of N17.

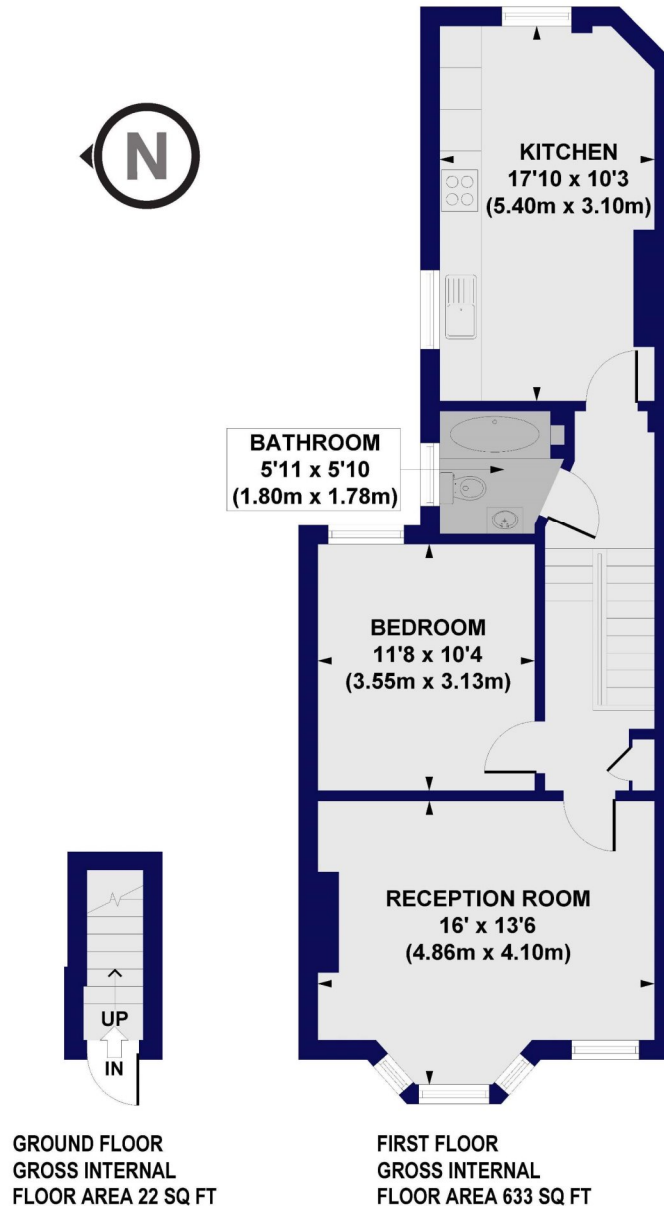


## ACCOMMODATION





**Gloucester Road, N17**  
**Approx. Gross Internal Floor Area 655 sq. ft / 60.89 sq. m**



All measurements of walls, doors, windows, fittings and appliances, including their size and location, are shown as standard sizes and do not constitute any warranty or representation by the seller, their agent or CP Creative. Any intending purchaser must satisfy himself by inspection or otherwise as to the correctness of the information contained in these plans. This plan is for illustrative purposes only and should be used as such by any prospective purchasers.

**Winkworth**

This floorplan is for illustration purposes only and is not to scale. The position and size of doors, windows, appliances and other features are approximate.