



BARTON WAY, WD6
£450,000 FREEHOLD

A CHAIN FREE THREE BEDROOM TUNNEL LINKED HOUSE.

Borehamwood | 020 8953 8899 | borehamwood@winkworth.co.uk



DESCRIPTION:

Offered for sale on a chain free basis is this three bedroom tunnel linked family house.

Positioned in a quiet and sought after cul de sac, within walking distance of local shops and places of worship, the property provides circa 1157 square feet of well proportioned, bright and spacious accommodation that is complimented by a secluded Southerly facing rear garden and off street parking for two cars to the front.

AT A GLANCE

- 3 Bedrooms
- Quiet Sought After Location
- Chain Free
- Southerly Rear Garden
- Off Street Parking
- 1157 Square Feet
- Conservatory
- Guest Cloakroom
- Gas Central Heating





Winkworth



Winkworth



Winkworth

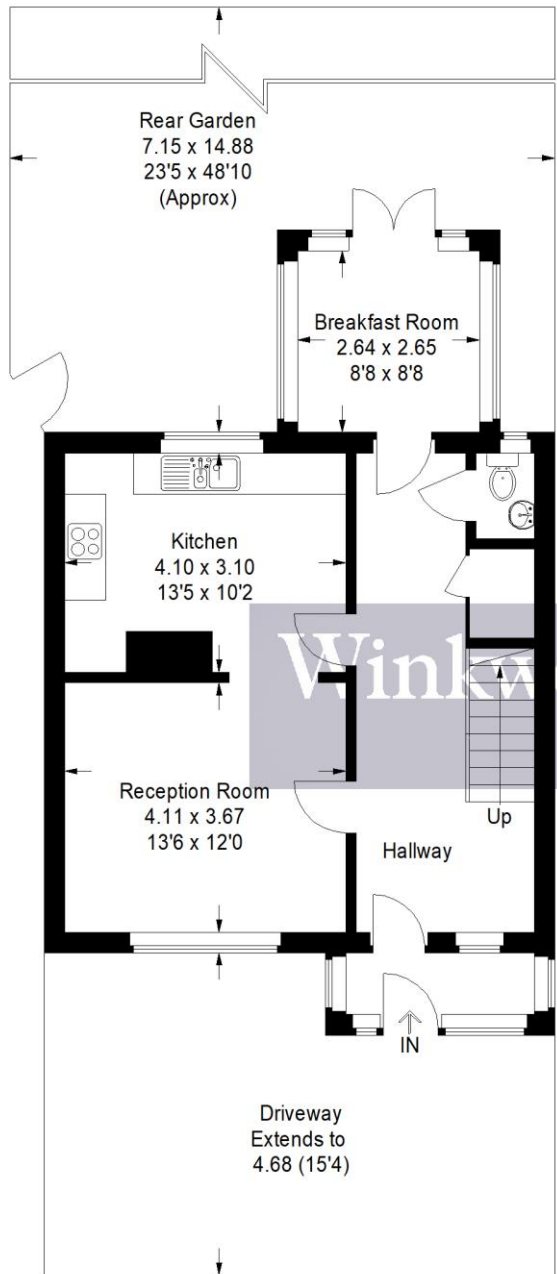


Winkworth

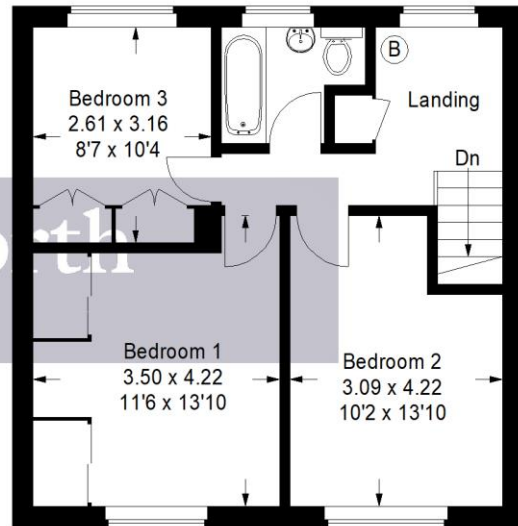


Winkworth

Approximate Gross Internal Area
107.5 sq m / 1157 sq ft



Ground Floor



First Floor

Illustration for identification purposes only, measurements are approximate, not to scale. Winkworth © 2021 (ID 781517)

This floorplan is for illustration purposes only and is not to scale. The position and size of doors, windows, appliances and other features are approximate.

