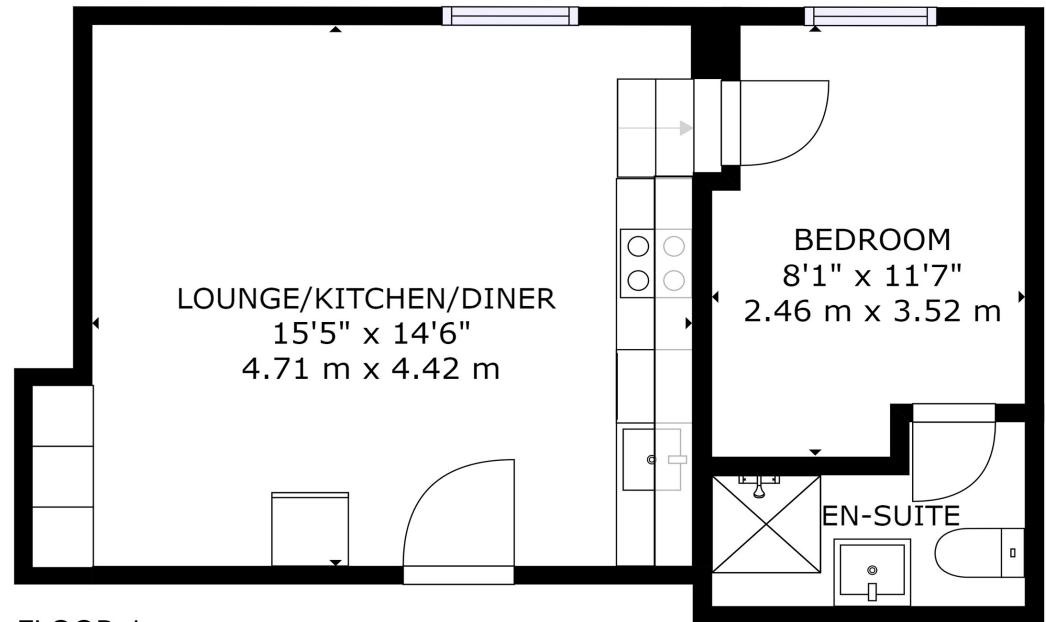




12 Owls Road
Boscombe, BH5 1AF
ASKING PRICE £117,500

Winkworth



FLOOR 1

GROSS INTERNAL AREA
FLOOR 1: 365 sq. ft, 34 m²
TOTAL: 365 sq. ft, 34 m²
SIZES AND DIMENSIONS ARE APPROXIMATE, ACTUAL MAY VARY.





GUIDE PRICE - £117,500

01202 434365 | southbourne@winkworth.co.uk

A brilliant investment opportunity to purchase a one bedroom flat with a long lease and allocated parking.

- Double Bedroom
- Shower Room
- Open Plan lounge/ kitchen
- Built Storage
- Allocated Parking
- Short Walk To The Beach



Boscombe is the suburb of Bournemouth and is located to the south east and neighbours both Bournemouth and Southbourne. Boscombe High Street offers a varied shopping experience with a number of well known high street stores. The area benefits from a number of local attractions including the award-winning blue flag sandy beaches with a level walk promenade extending from Hengistbury Head through to Sandbanks.

A local bus service provides links to Bournemouth and Poole with a different shopping experience together with a number of restaurants and bars providing a vibrant nightlife. A local train station provides direct links to Southampton, Southampton Airport and London which is approximately 100 miles away. Bournemouth International airport (6 miles) offers a varied schedule of flights to a number of European destinations.

Winkworth Southbourne
29 Southbourne Grove, Bournemouth, Dorset, BH6 3QT
01202 434365 | southbourne@winkworth.co.uk
winkworth.co.uk/southbourne

Winkworth