



Princes Way, SW19

£1,800 per month *Unfurnished*



MATERIAL INFO

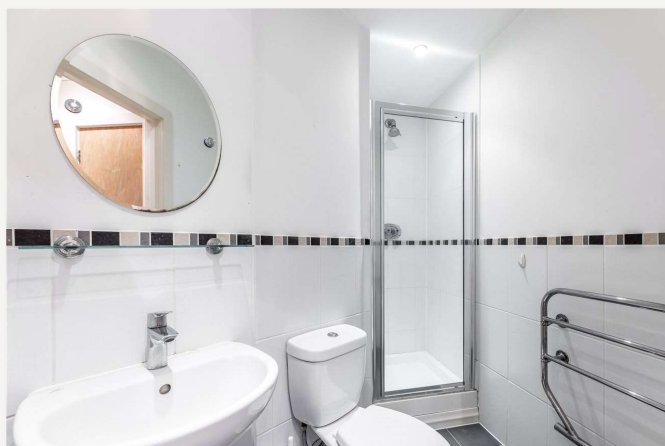
Deposit: £2,076.92

Holding Deposit: £415.38

Council Tax Band: Wandsworth

KEY FEATURES

- 2 bedrooms
- 2 bathrooms
- Private patio
- Direct access to communal gardens
- Allocated off street parking
- 0.4 miles from Southfields station



Southfields

020 8877 1000 | southfields@winkworth.co.uk

Winkworth

for every step...

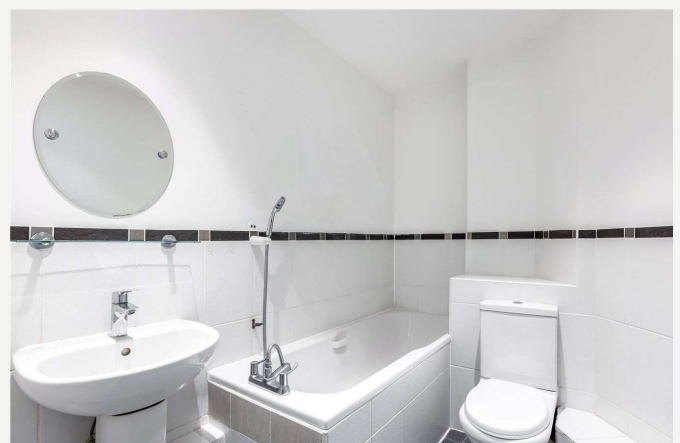


A well-presented two double bedroom, two bathroom ground floor apartment in Hansler Court, Princes Way (SW19), offering direct access to the communal gardens and an excellent sense of space and privacy for a modern block.

The accommodation extends to approximately 624 sq. ft / 58 sq. m and features a bright open-plan kitchen/reception with doors opening onto a private patio, ideal for dining outside or simply enjoying the outlook.

Both bedrooms are well-proportioned, complemented by two bathrooms (including an en-suite to the principal bedroom), making it a great option for sharers, a couple needing a home office, or a young family.

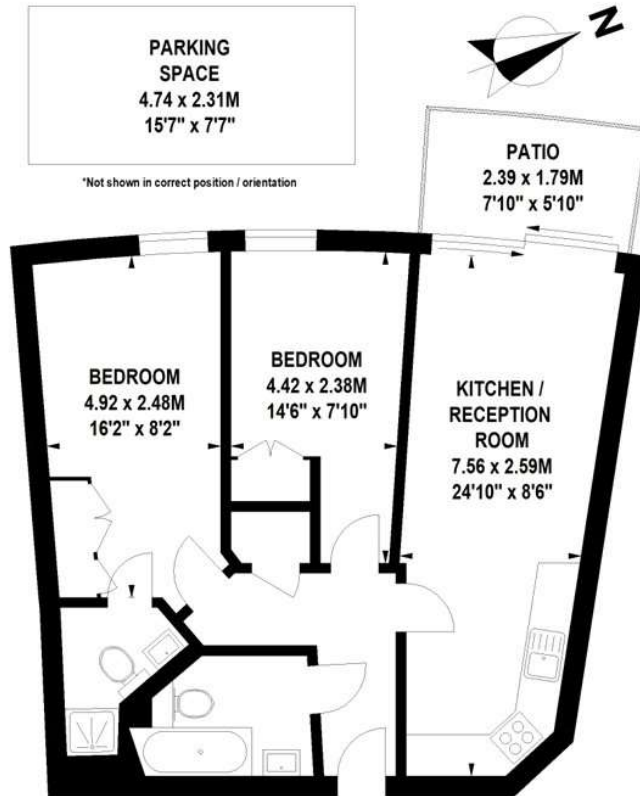
Further benefits include allocated off-street parking and a fantastic location just 0.4 miles from Southfields Station (District Line).





Hansler Court, Princes Way, SW19

Approximate Gross Internal Area 58 sq.m / 624 sq. ft



Ground Floor

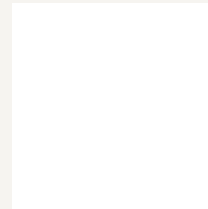
Floor Plan produced for WINKWORTH by Mays Property Marketing © . Tel 020 3397 4594

Illustration for identification purposes only. Not to scale.

Orientation, measurements, and other details are approximate and for guidance only, purchasers should verify details independently.

Where a room has a sloping ceiling the dotted line marks 1.50M height, and all measurements shown are at floor level.

For more information, scan the QR code or visit the link below



<https://www.winkworth.co.uk/rent/property/SOU260013>

Where no figures are shown, we have been unable to ascertain the information. All figures that are shown were correct at the time of printing.

Southfields

020 8877 1000 | southfields@winkworth.co.uk

Winkworth

for every step...

Winkworth wishes to inform prospective buyers and tenants that these particulars are a guide and act as information only. All our details are given in good faith and believed to be correct at the time of printing but they don't form part of an offer or contract. No Winkworth employee has authority to make or give any representation or warranty in relation to this property. All fixtures and fittings, whether fitted or not are deemed removable by the vendor unless stated otherwise and room sizes are measured between internal wall surfaces, including furnishings.