



**BREEZERS COURT, LONDON, E1W**  
**£500 PER WEEK FURNISHED**

## FANTASTIC TWO BEDROOM, TWO BATHROOM WAREHOUSE APARTMENT.

**Shoreditch** | 020 7749 7650 | [shoreditch@winkworth.co.uk](mailto:shoreditch@winkworth.co.uk)

Tenant Fees Apply: Details of fees for tenant referencing, tenancy agreement admin fees and renewal fees are available on the Winkworth website and the link can be found with the displayed rent for the property. Tenants should ensure they are fully conversant with these upfront fees and other costs that are involved at the outset of the tenancy before making an offer to rent and your local Winkworth office will provide written details upon request.

[winkworth.co.uk](http://winkworth.co.uk)

**Winkworth**

See things differently



### DESCRIPTION:

Fashionably located near St Katharine Docks, this two bedroom flat enjoys a generous interior with open-plan entertaining space with new fitted kitchen and large island/breakfast bar. Ideally placed for swift access to both Canary Wharf and the City. Breezers Court is moments from the River Thames and enjoys close proximity to the many attractions that can be found in and around Tower Hill. Local transport links include Tower Hill Station, Wapping Station on the East London line (two stops to Shoreditch High Street). Liverpool Station and Spitalfields Market is a comfortable walk away (1.5km).

This gorgeous two bedroom warehouse apartment benefitting from wooden floors, is well located at the rear of the building close to the cobbled back street. Clean, bright and quiet, Breezers Court is unusual in that it has very high ceilings and large windows. This apartment is very spacious, with two very large bedrooms, two bathrooms, kitchen area and large living space.

Wapping is home to some fantastic bars with a wealth of history, such as the Captain Kidd, named after the Scottish privateer William Kidd and Prospect of Whitby, the oldest riverside tavern in London.

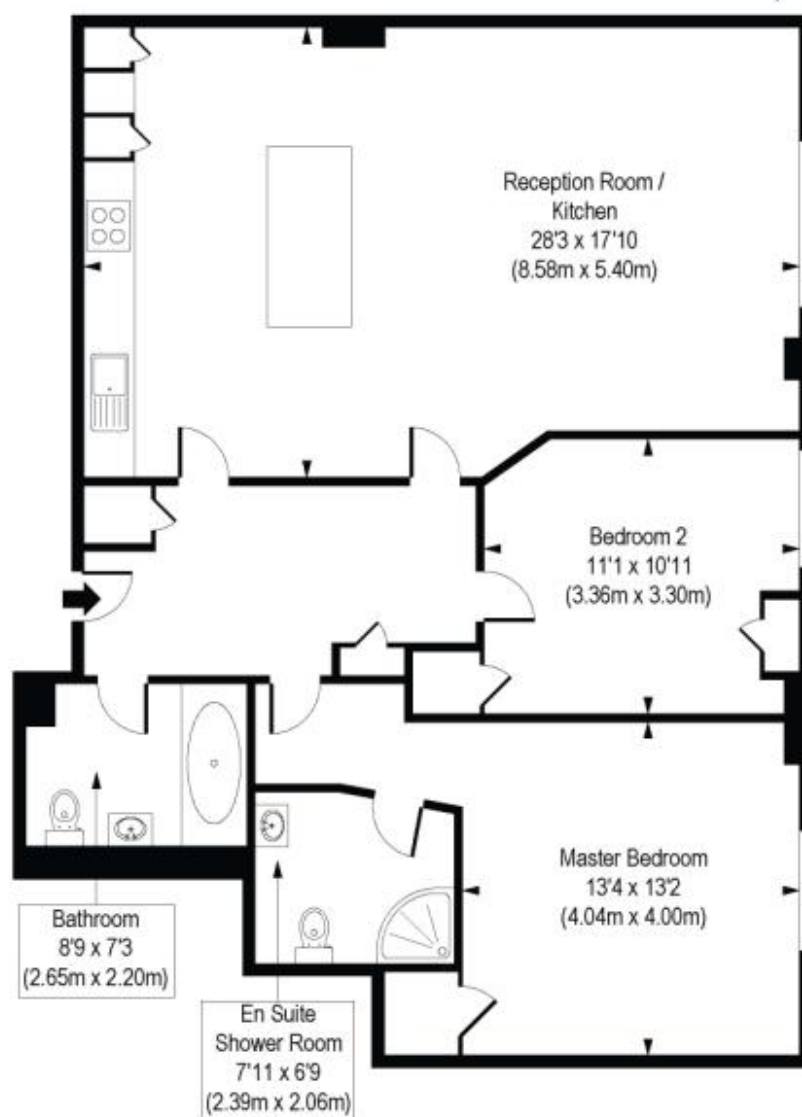
Offered furnished.





## Breezers Court, E1W

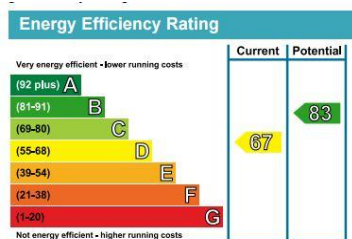
Approx. Gross Internal Floor Area 1081 sq. ft / 100.39 sq. m



Second Floor

COMPLIANT WITHRICS CODE OF MEASURING PRACTICE. Floorplans for illustrative purposes only and is not to scale. Every attempt has been made to ensure the accuracy of the floorplan shown, however all measurements, fixtures, fittings and data shown are an approximate interpretation for illustrative purposes only. Liability for errors, omissions or mis-statement through negligence or otherwise is hereby excluded.

This floorplan is for illustration purposes only and is not to scale. The position and size of doors, windows, appliances and other features are approximate.



Shoreditch | 020 7749 7650 | shoreditch@winkworth.co.uk

**Winkworth**

[winkworth.co.uk](http://winkworth.co.uk)

See things differently

Winkworth wishes to inform prospective buyers and tenants that these particulars are a guide and act as information only. All our details are given in good faith and believed to be correct at the time of printing but they don't form part of an offer or contract. No Winkworth employee has authority to make or give any representation or warranty in relation to this property. All fixtures and fittings, whether fitted or not are deemed removable by the vendor unless stated otherwise and room sizes are measured between internal wall surfaces, including furnishings.