



Smith Square, UK, SW1P

£2,900 PER MONTH

PART FURNISHED

AT A GLANCE

- Double Bedroom
- Large Reception
- Fitted Kitchen
- Bathroom
- Second Floor
- Communal Gardens

Winkworth

for every step...



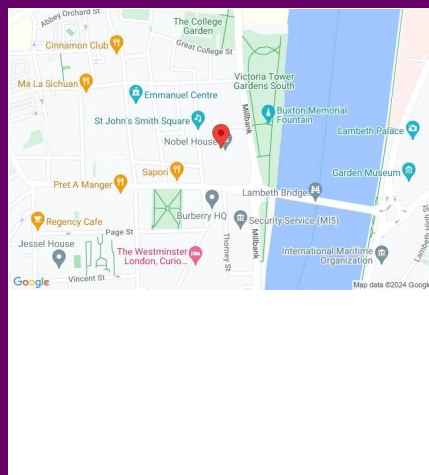
| Energy Efficiency Rating | | |
|---------------------------------------------|-------------------------|-----------|
| | Current | Potential |
| Very energy efficient - lower running costs | | |
| A (92+) | | |
| B (81-91) | | |
| C (69-80) | | |
| D (55-68) | | |
| E (39-54) | | |
| F (21-38) | | |
| G (1-20) | | |
| Not energy efficient - higher running costs | | |
| England, Scotland & Wales | EU Directive 2002/91/EC | |

SMITH SQUARE, UK, SW1P

£2,900 PER MONTH
PART FURNISHED

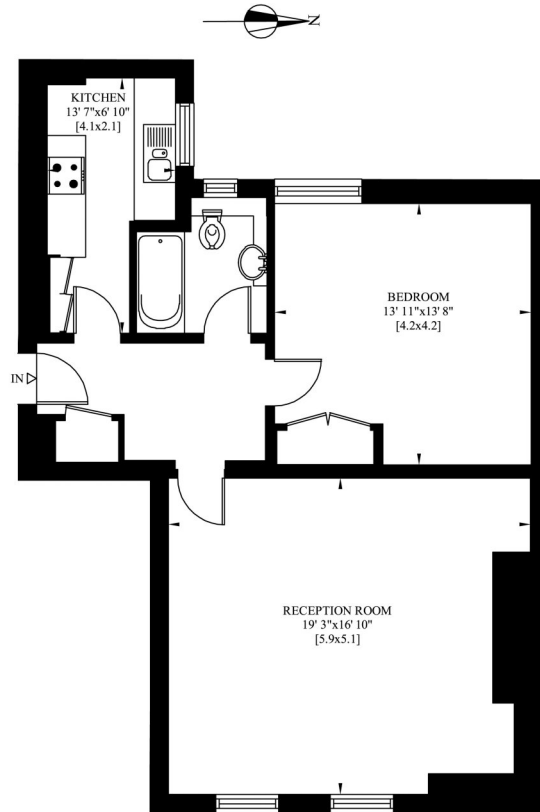
A beautifully presented and incredibly spacious, one double bedroom apartment situated in this desirable backwater in the heart of Westminster. Extending in excess of 700 sq. ft, the property boasts wonderful views over St John's Church. The well-appointed accommodation comprises a magnificent reception room with ample space to dine and entertain, separate fitted kitchen, generous double bedroom with storage and a luxurious bathroom. Further benefits include secure entry system and attractive communal garden to the rear.

Smith Square is one of Westminster's most sought after locations and is ideally positioned moments from the Houses of Parliament and River Thames. Amenities can be found nearby on Horseferry Road and Victoria Street with its plethora of retail outlets, restaurants and theatres. Smith Square is also highly convenient for transport links across London and further afield, with both Westminster and St James's underground stations and Victoria and Waterloo mainline stations within easy reach.



Winkworth wishes to inform prospective buyers and tenants that these particulars are a guide and act as information only. All our details are given in good faith and believed to be correct at the time of printing but they don't form part of an offer or contract. No Winkworth employee has authority to make or give any representation or warranty in relation to this property. All fixtures and fittings, whether fitted or not are deemed removable by the vendor unless stated otherwise and room sizes are measured between internal wall surfaces, including furnishings.

Gross Internal Area: 67 Sq. metres
725 Sq. feet



SECOND FLOOR

Pimlico & Westminster | 020 7828 1786 |
pimlico@winkworth.co.uk

winkworth.co.uk/pimlico

Winkworth

for every step...