



19 Great Crescent, Newbury, RG14 7TB

****CLOSED CHAIN**** A beautifully presented three double bedroom detached house with a driveway and garage a views over the surrounding green.

As you enter the property, the dual aspect living room is to your left. The extremely modern kitchen is on the other side of the hall and features glossy white cabinets with a grey worktop. There is access to the rear garden via french doors. The utility is accessible via the kitchen and offers access to the driveway. Downstairs also benefits from a cloakroom.

Upstairs are three double bedrooms. The master suite offers built in storage as well as a modern ensuite with walk in shower. Bedroom two is of a similarly good size and also offers built in storage. The family bathroom consists of a shower over the bath and dark tiling across the majority of the room.

To the front is a low maintenance garden which is mainly laid to lawn. To the side of the property is a driveway with space for two cars, as well as a single garage. To the rear is a fantastic sized garden with a patio area, great for alfresco dining. To the bottom of the garden is a small seating area and a boarder with mature plants.



Winkworth

AT A GLANCE

1101ft²

Living Room
Kitchen Diner
Utility Room
Cloak Room
Three Double Bedrooms
Ensuite in Master
Family Bathroom
Garage
Driveway
Rear Garden

UTILITIES

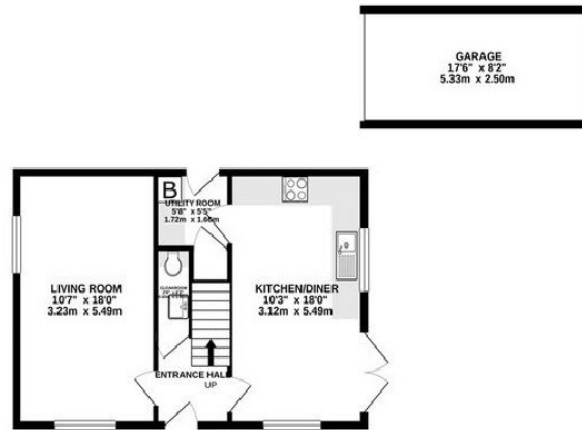
The property is connected to all mains and operates on gas central heating. There is Ultrafast broadband available in the area and there are no known mobile coverage issues.

EPC -B
West Berkshire Council Tax Band - E

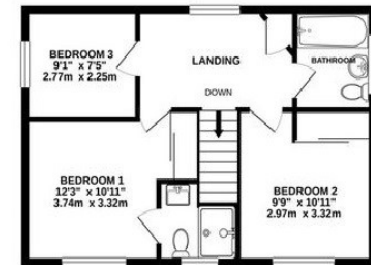
DIRECTIONS

What3Words///busy.power.tolls

GROUND FLOOR
622 sq.ft. (57.8 sq.m.) approx.



1ST FLOOR
479 sq.ft. (44.5 sq.m.) approx.



TOTAL FLOOR AREA: 1101 sq.ft. (102.2 sq.m.) approx.



Newbury Office

43 Northbrook Street, Newbury, Berkshire RG14 1DT
01635 552552 | newbury@winkworth.co.uk

winkworth.co.uk/newbury

Winkworth

See things differently.