



CHIDDINGSTONE STREET, SW6
£525,000 LEASEHOLD

An unusually spacious, split level, studio flat in a fantastic location in Parsons Green spanning 484 sq. ft with a large south facing garden.

Fulham & Parsons Green | 020 7731 3388 | fulham@winkworth.co.uk

Winkworth

for every step...

winkworth.co.uk



DESCRIPTION:

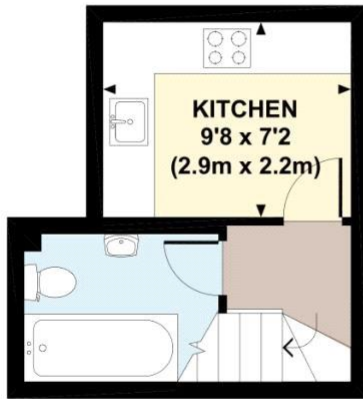
The property has a generous reception room with wood flooring, doors open out onto the large south facing walled patio garden, with it being so private it is ideal for entertaining. There is a small double bedroom and a good size wardrobe/storage room. The modern kitchen and tiled bathroom are located on the lower ground floor. The flat also benefits from a secure gated entrance and outside storage for bicycles. It is being sold with a long lease of 965 years and offers versatile possibilities, perfect for personal residence or a lucrative rental investment opportunity.

Chiddingstone Street is located within the highly regarded Peterborough Estate, it is a short walk to Parsons Green and Eel Brook Common and enjoys immediate access to an array of local amenities and restaurants across the New Kings Road and the Green.

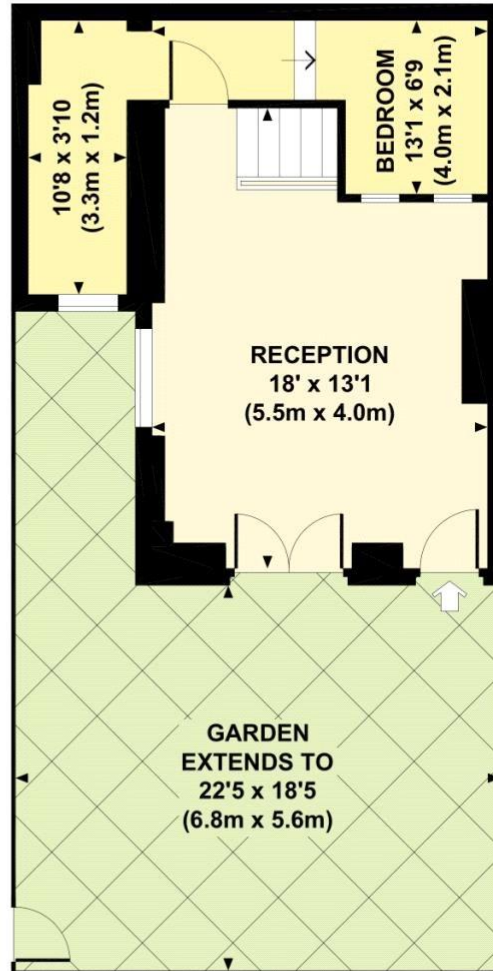


CHIDDINGSTONE STUDIO, CHIDDINGSTONE, SW6

Approx. gross internal area
484 Sq Ft. / 45 Sq M.



LOWER GROUND FLOOR



GROUND FLOOR



All measurements are approximate and for illustration purposes only as defined by the RICS Code of Measuring Practice © 2012
Dowling Jones Design www.dowlingjones.com 020 7610 9933

This floorplan is for illustration purposes only and is not to scale. The position and size of doors, windows, appliances and other features are approximate.

Tenure: Leasehold
Term: Expires - 28/09/2988
Service Charge: Ask agent
Ground Rent: Ask agent
Council Tax Band: E **EPC:** D

Where no figures are shown, we have been unable to ascertain the information. All figures that are shown were correct at the time of printing.

Fulham & Parsons Green | 020 7731 3388 | fulham@winkworth.co.uk

Winkworth

for every step...

winkworth.co.uk

Winkworth wishes to inform prospective buyers and tenants that these particulars are a guide and act as information only. All our details are given in good faith and believed to be correct at the time of printing but they don't form part of an offer or contract. No Winkworth employee has authority to make or give any representation or warranty in relation to this property. All fixtures and fittings, whether fitted or not are deemed removable by the vendor unless stated otherwise and room sizes are measured between internal wall surfaces, including furnishings.