



**4 Dormy Crescent**  
Ferndown BH22 8FB  
**Guide Price £975,000**

**Winkworth**





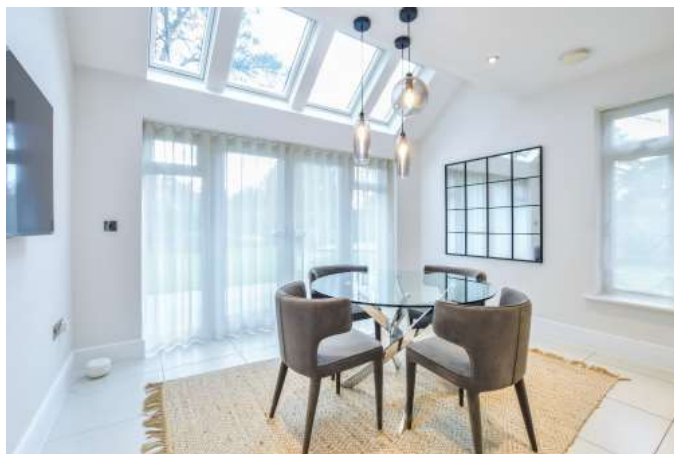
## Guide Price £975,000 FREEHOLD

This stunning, four double bedroom, three bathroom detached house is situated within a particularly sought after development on a west facing plot of approx 0.2 of an acre just 15 minutes walking distance of Ferndown town centre . Further benefiting from a professionally landscaped 75ft garden, driveway and a double garage. NO ONWARD CHAIN. A beautiful family home that has to be seen to be truly appreciated, the property has been finished to an exceptionally high standard throughout with a number of upgraded features installed, including underfloor heating, LED lighting, a contemporary media wall and air condition to name just a few.

Four Double Bedrooms  
En-suite With Dressing Room  
Professionally Landscaped West Facing Garden  
Three Reception Rooms  
Double Garage  
Living Room With Media Wall  
Driveway  
Utility Room  
Close To Schools & Amenities

EPC B | Council Tax Band G

01202 434365  
ferndown@winkworth.co.uk





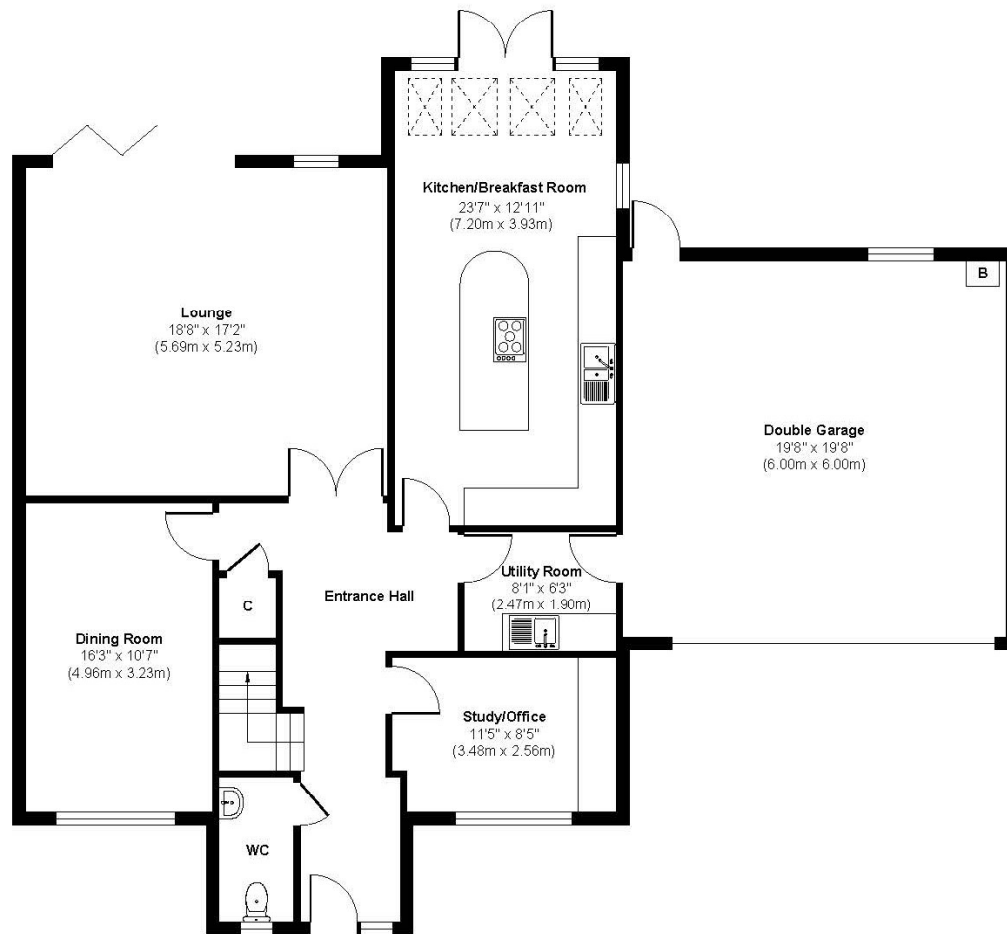
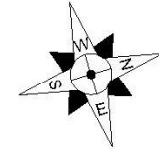




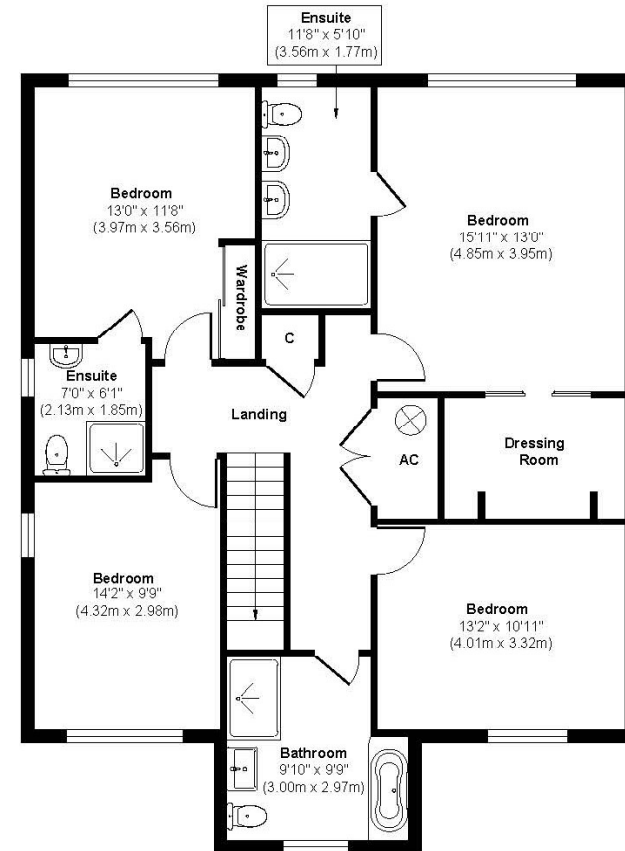




# Dormy Crescent



**Ground Floor**  
Approximate Floor Area  
1510 sq. ft  
(140.30 sq. m)



**First Floor**  
Approximate Floor Area  
1065 sq. ft  
(98.90 sq. m)

**Approx. Gross Internal Floor Area 2575 sq. ft / 239.20 sq. m.**

Illustration for identification purposes only, measurements are approximate and not to scale, unauthorised reproduction is prohibited.





## LOCATION

Dormy Crescent is a very sought after residential area, conveniently positioned approximately a 15 minute walk from Ferndown town centre, which features a range of shops, cafes and amenities including an M&S Foodhall. There is a championship Golf Course on nearby Golf Links Road and there are bus stops just a stone's throw away with buses to Poole, Wimborne and Bournemouth all of which have a wide range of amenities. Award winning beaches are just twenty minutes away and the A31 provides quick access to Southampton, London and beyond for the commuter by car.

## Winkworth Ferndown

406 Ringwood Road, Ferndown, Dorset, BH22 9AU

01202 434365 | [ferndown@winkworth.co.uk](mailto:ferndown@winkworth.co.uk)

[winkworth.co.uk/ferndown](http://winkworth.co.uk/ferndown)

# Winkworth