



4 Dormy Crescent
Ferndown BH22 8FB
Offers Over £1,000,000

Winkworth



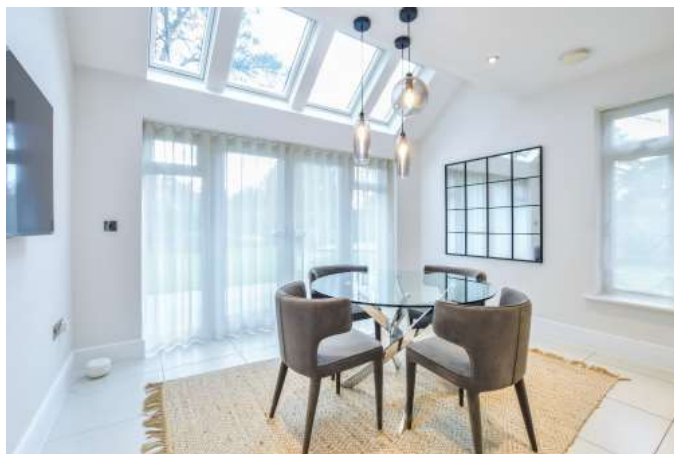
OFFERS OVER £1,000,000 FREEHOLD

This stunning, four double bedroom, three bathroom detached house is situated within a particularly sought after development on a west facing plot of approx 0.2 of an acre just 15 minutes walking distance of Ferndown town centre . Further benefiting from a professionally landscaped 75ft garden, driveway and a double garage. NO ONWARD CHAIN. A beautiful family home that has to be seen to be truly appreciated, the property has been finished to an exceptionally high standard throughout with a number of upgraded features installed, including underfloor heating, LED lighting, a contemporary media wall and air condition to name just a few.

Four Double Bedrooms
En-suite With Dressing Room
Professionally Landscaped West Facing Garden
Three Reception Rooms
Double Garage
Living Room With Media Wall
Driveway
Utility Room
Close To Schools & Amenities

EPC B | Council Tax Band G

01202 434365
ferndown@winkworth.co.uk

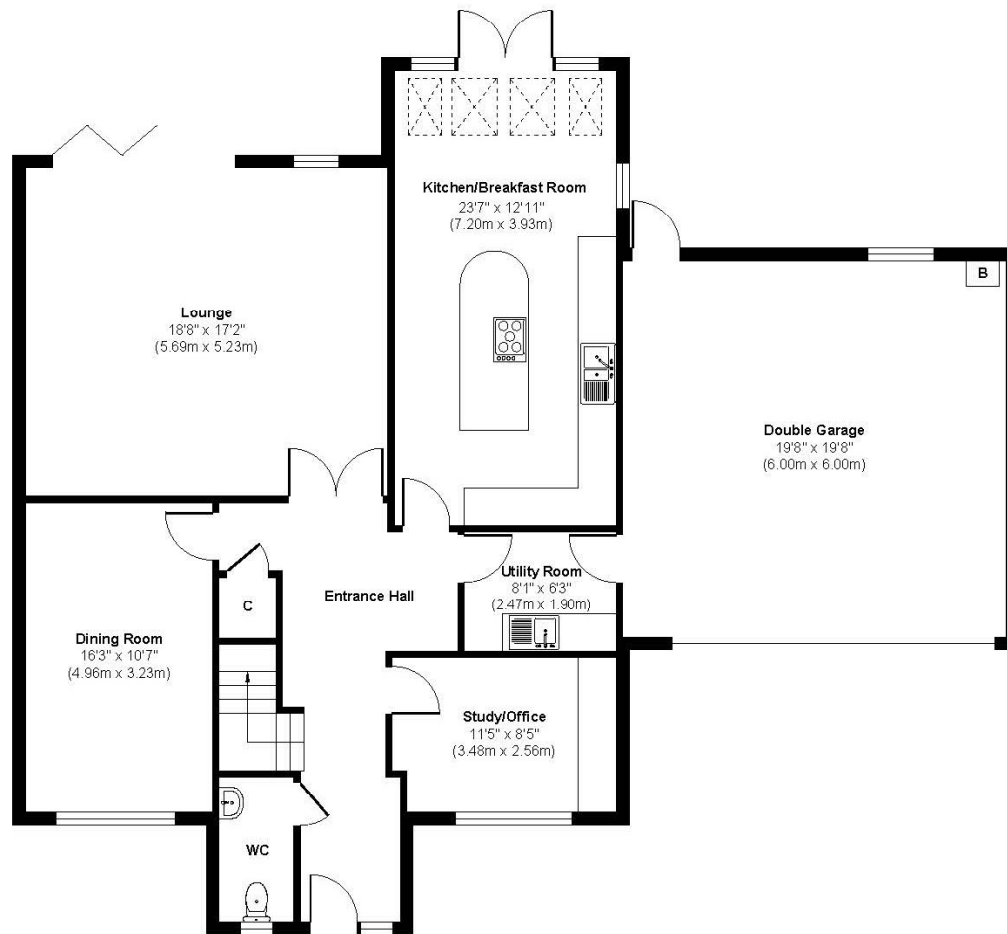
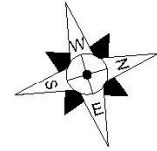




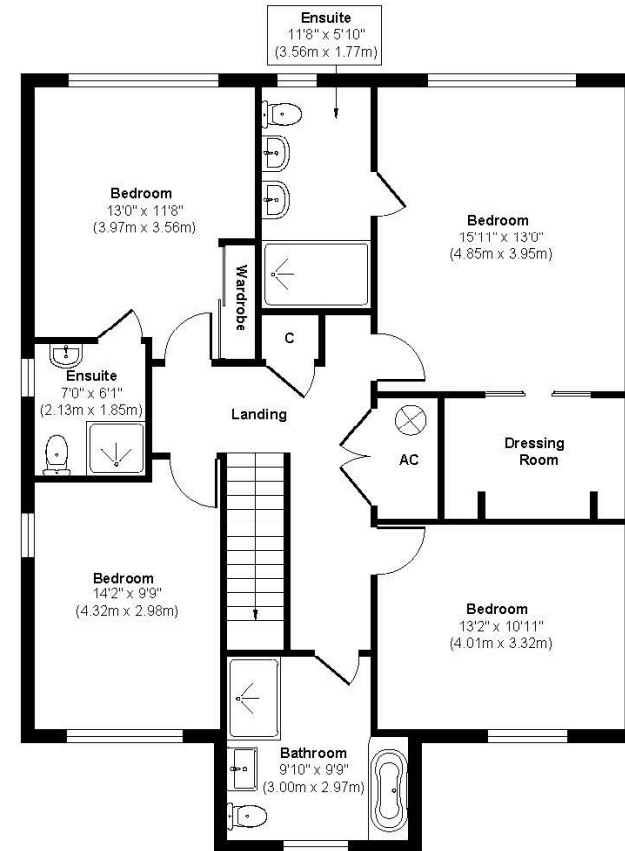




Dormy Crescent



Ground Floor
Approximate Floor Area
1510 sq. ft
(140.30 sq. m)



First Floor
Approximate Floor Area
1065 sq. ft
(98.90 sq. m)

Approx. Gross Internal Floor Area 2575 sq. ft / 239.20 sq. m.

Illustration for identification purposes only, measurements are approximate and not to scale, unauthorised reproduction is prohibited.



LOCATION

Dormy Crescent is a very sought after residential area, conveniently positioned approximately a 15 minute walk from Ferndown town centre, which features a range of shops, cafes and amenities including an M&S Foodhall. There is a championship Golf Course on nearby Golf Links Road and there are bus stops just a stone's throw away with buses to Poole, Wimborne and Bournemouth all of which have a wide range of amenities. Award winning beaches are just twenty minutes away and the A31 provides quick access to Southampton, London and beyond for the commuter by car.

Winkworth Ferndown

406 Ringwood Road, Ferndown, Dorset, BH22 9AU

01202 434365 | ferndown@winkworth.co.uk

winkworth.co.uk/ferndown

Winkworth