



AZURE COURT, 666 KINGSBURY ROAD, KINGSBURY, LONDON, NW9

£350,000 LEASEHOLD

ONE BEDROOM 4TH FLOOR APARTMENT WITH ALLOCATED PARKING

- **APPROX 109 YEARS LEASE REMAINING**
- **APPROX £2,000 SERVICE CHARGE**
- **APPROX £150 GROUND RENT**

Kingsbury | 020 8204 0000 | kingsbury@winkworth.co.uk

Winkworth

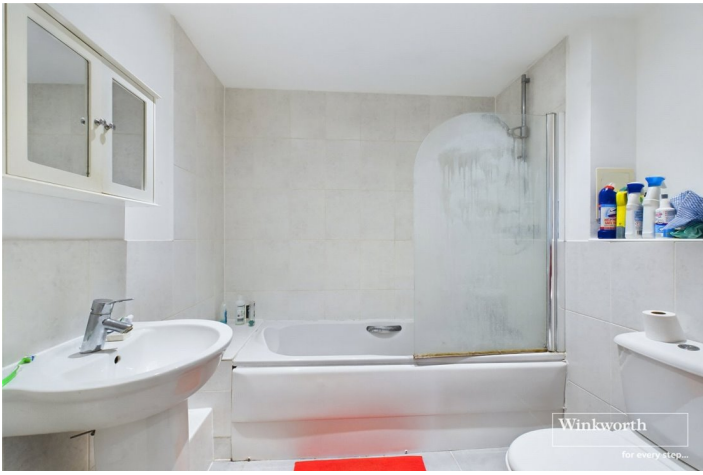
winkworth.co.uk

See things differently

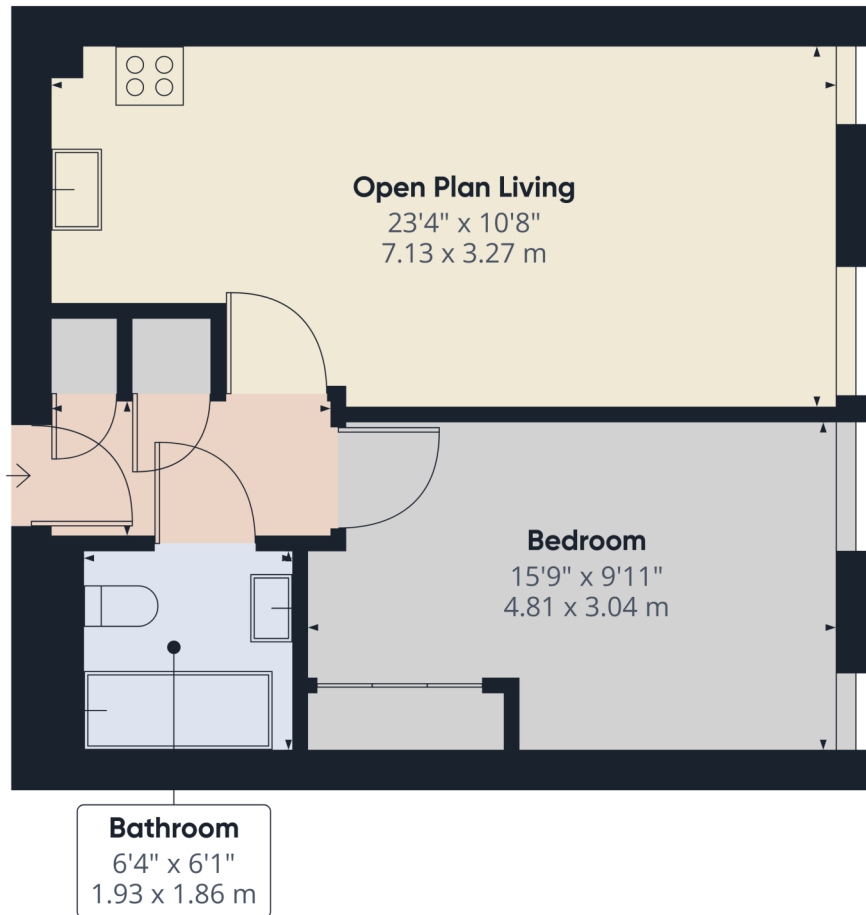


Welcome to Azure Court, a development epitomizing modern urban living. This PURPOSE-BUILT 4TH FLOOR flat boasts contemporary elegance and convenience, making it an ideal haven for both FIRST-TIME BUYERS and savvy INVESTORS seeking a BUY-TO-LET opportunity, and the best part -it comes CHAIN-FREE. A thoughtfully designed ONE-BEDROOM residence, you'll immediately be struck by its space and natural light. The OPEN-PLAN kitchen is a features MODERN APPLIANCES, sleek countertops, and plenty of storage. Large windows with picturesque views, provide a delightful backdrop to your daily life. Additional benefits of an allocated parking space for an extra layer of practicality to this residence. No more searching for parking – simply arrive home and effortlessly park in your DESIGNATED PARKING SPACE. The location of this property could not be better. Many amenities are within walking distance including KINGSBURY and QUEENSBURY tube stations both serving the Jubilee Line. Local supermarkets such as Tesco Express and Aldi are virtually at the doorstep. Internal viewing is highly advised to appreciate this home at its entirety.





Winkworth



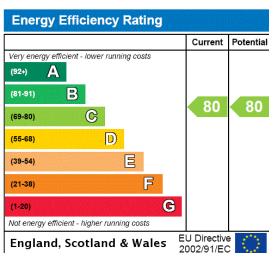
Approximate total area⁰¹
474.42 ft²
44.08 m²

Excluding balconies and terraces

While every attempt has been made to ensure accuracy, all measurements are approximate, not to scale. This floor plan is for illustrative purposes only.

GIRAFFE360

This floorplan is for illustration purposes only and is not to scale. The position and size of doors, windows, appliances and other features are approximate.



Kingsbury | 020 8204 0000 | kingsbury@winkworth.co.uk