



GRAY'S INN ROAD, LONDON, WC1X

£600,000 LEASEHOLD APPROX 120 YEARS REMAINING

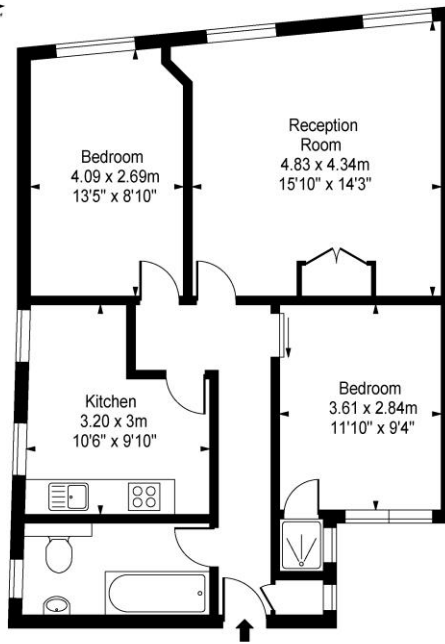
DESCRIPTION:

This late Georgian First-Floor conversion fronting both Frederick and Gray's Inn Roads is configured with a dine-in kitchen, a large reception room, two double bedrooms, one with ensuite shower, and a newly fitted family bathroom. The property well located giving good access to Kings Cross, St Pancras Eurostar, The City, West End Farringdon, Angel and Upper Street.

Leasehold: 120 Years Remaining | Service Charge: £700 P/A inc. Ground Rent | Council Tax: Camden E approx. £2,190 P/A

Clerkenwell & City | 0207 405 1288 | clerkenwell@winkworth.co.uk

Grays Inn Road, WC1



First Floor

Approx Gross Internal Area 735 Sq Ft - 68.28 Sq M

Measured in accordance with RICS guidelines. Every attempt is made to ensure accuracy
However all measurements are approximate.
The floor plan is illustrative purposes only and is not to scale

This floorplan is for illustration purposes only and is not to scale. The position and size of doors, windows, appliances and other features are approximate.