



HILLSIDE, NW10  
**£2,000 PER MONTH FURNISHED**

**SPACIOUS TWO BED, TWO BATHROOM  
 APARTMENT LOCATED IN A MODERN PURPOSE  
 BUILT DEVELOPMENT IN STONEBRIDGE.**

Kensal Rise & Queens Park | 0208 960 4947 |  
 kensalrise@winkworth.co.uk

**Winkworth**

for every step...

[winkworth.co.uk](https://www.winkworth.co.uk)





## DESCRIPTION:

New to the lettings market, this apartment offers spacious living to include two double bedrooms and two separate bathrooms. A beautiful open plan kitchen reception room with door leading to a terraced balcony. The modern kitchen is fitted with integrated appliances and hard wood flooring. In addition you will find a stylish fully tiled bathroom, low voltage ceiling lights, utility cupboard, entry phone system, private electric gated parking.

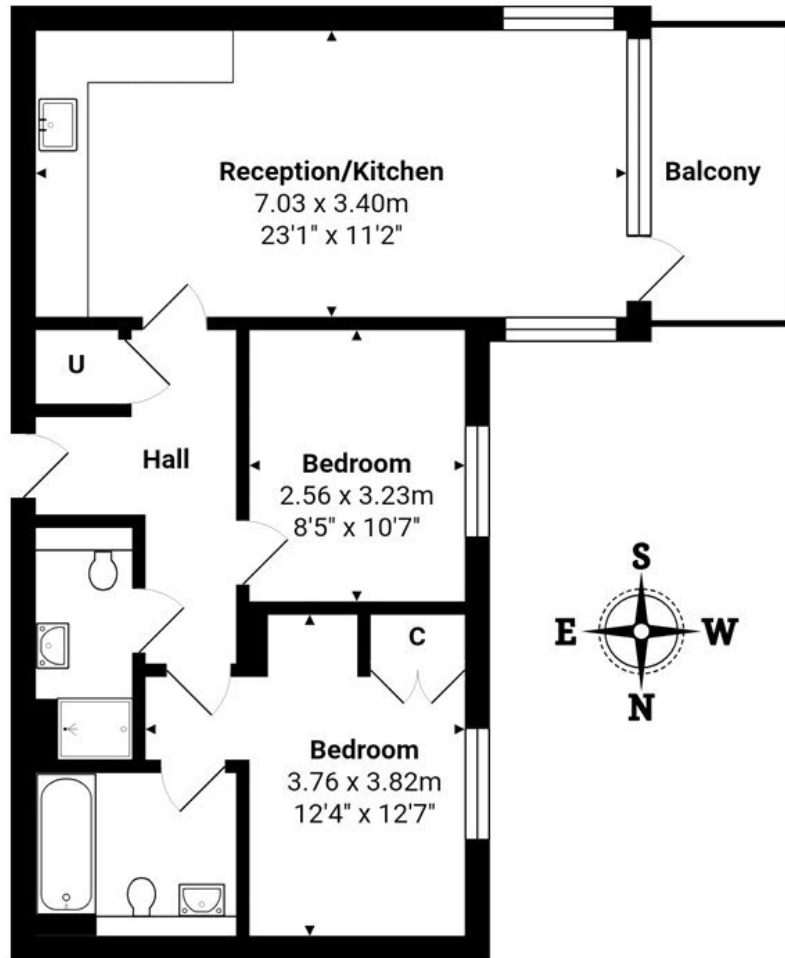
This apartment also comes with one allocated OFF STREET PARKING space which is included in the rent.

Council tax - (Band C)

Ward - Stonebridge







**2nd Floor**

**Total Area: 61.6 m<sup>2</sup> ... 663 ft<sup>2</sup> (excluding balcony)**

All measurements are approximate and for display purposes only

This floorplan is for illustration purposes only and is not to scale. The position and size of doors, windows, appliances and other features are approximate.

**Deposit: £0.00**

**Holding Deposit:**

**Council Tax Band: C**

where no figures are shown, we have been unable to ascertain the information. All figures that are shown were correct at the time of printing.

Energy Efficiency Rating		Current	Potential
Very energy efficient - lower running costs			
(92-100)	<b>A</b>		
(81-91)	<b>B</b>		
(69-80)	<b>C</b>		
(55-68)	<b>D</b>	63	63
(39-54)	<b>E</b>		
(21-38)	<b>F</b>		
(1-20)	<b>G</b>		
Not energy efficient - higher running costs			
England, Scotland & Wales		EU Directive 2002/91/EC	

**Kensal Rise & Queens Park | 0208 960 4947 | kensalrise@winkworth.co.uk**

**Winkworth**

**for every step...**

**winkworth.co.u**

winkworth wishes to inform prospective buyers and tenants that these particulars are a guide and act as information only. All our details are given in good faith and believed to be correct at the time of printing but they don't form part of an offer or contract. No Winkworth employee has authority to make or give any representation or warranty in relation to this property. All fixtures and fittings, whether fitted or not are deemed removable by the vendor unless stated otherwise and room sizes are measured between internal wall surfaces, including furnishings.