



FULHAM ROAD, SW6
£825,000 LEASEHOLD

Fulham & Parsons Green | 020 7731 3388 | fulham@winkworth.co.uk

Winkworth

for every step...

winkworth.co.uk



DESCRIPTION:

A lovely and spacious two-bedroom flat on the second floor of a handsome mansion block in the heart of Fulham.

The flat is located on the second floor and has two exceptionally large double bedrooms complete with inbuilt storage. The bathroom comprises a bath with shower above, sink with vanity mirror and light. There is a separate WC directly next door.

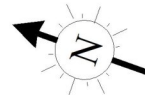
The reception room has lovely high ceilings with wooden floors running throughout, there is ample space for a large set of sofas and coffee table. The kitchen is accessed through the sitting room, it is modern and sleek with a kitchen island, breakfast bar, induction hob with oven below, and inbuilt fridge/freezer, dishwasher and washing machine. This is the perfect place to entertain and look out over Fulham's rooftops through the beautiful triple sash windows.

Kings Court Mansions is ideally located on the Fulham Road with easy access to Parsons Green which has a wealth of shops, restaurants, local supermarkets and pubs. There are also plenty of green spaces a short walk away such as Eel Brook Common, Parsons Green and Hurlingham Park. The area is well served with transport from Parsons Green tube station (District Line), Fulham Broadway (District Line), West Brompton (Overground) as well as having regular bus routes into central London and beyond.

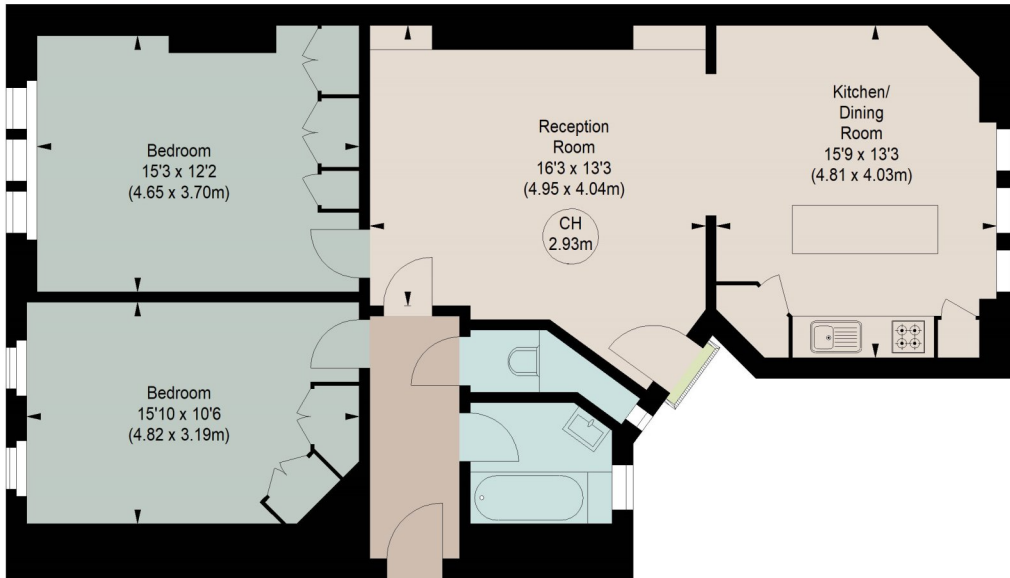


KINGS COURT MANSIONS, SW6

Approximate gross internal area
930 sq ft / 86.40 sq m



Key :
CH - Ceiling Height



SECOND FLOOR

Illustration For Identification Purposes Only.
All measurements and areas are approximate, not to scale.

This floorplan is for illustration purposes only and is not to scale. The position and size of doors, windows, appliances and other features are approximate.

Fulham & Parsons Green | 020 7731 3388 | fulham@winkworth.co.uk

Winkworth

for every step...

winkworth.co.uk

Winkworth wishes to inform prospective buyers and tenants that these particulars are a guide and act as information only. All our details are given in good faith and believed to be correct at the time of printing but they don't form part of an offer or contract. No Winkworth employee has authority to make or give any representation or warranty in relation to this property. All fixtures and fittings, whether fitted or not are deemed removable by the vendor unless stated otherwise and room sizes are measured between internal wall surfaces, including furnishings.