



SEREN PARK GARDENS, BLACKHEATH, LONDON, SE3 7RS  
**£550,000 LEASEHOLD**

**IN THIS FANTASTIC POSITION AND WITH INCREDIBLE VIEWS, IS THIS SUPERB TWO DOUBLE BEDROOM, TWO BATHROOM, EIGHTH FLOOR APARTMENT WITH A PRIVATE BALCONY WITHIN THIS SOUGHT AFTER DEVELOPMENT VERY CLOSE TO MAZE HILL STATION.**

Blackheath | 0208 8520999 | [blackheath@winkworth.co.uk](mailto:blackheath@winkworth.co.uk)

**Winkworth**





## DESCRIPTION:

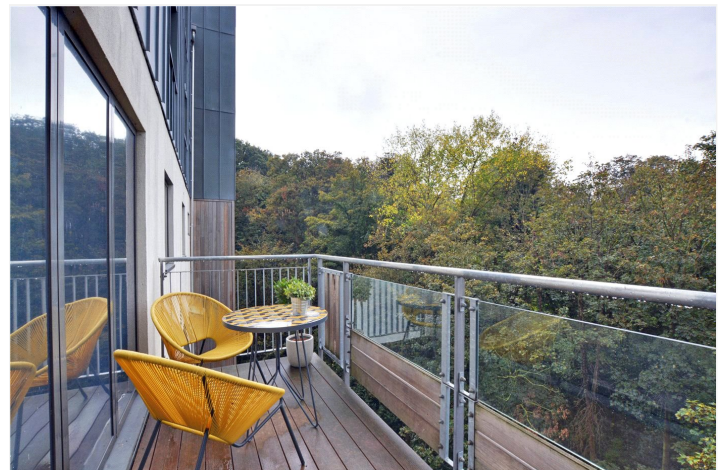
The accommodation comprises a superb reception room and modern open-plan kitchen, large master bedroom with ensuite shower room, a second double bedroom with built in wardrobes and a stunning modern bathroom. There is also ample storage and a utility cupboard. With access from the reception room onto a private terrace you will benefit from unrestricted views over Greenwich and towards Canary Wharf.

The property further benefits from a 24-hour concierge, fantastic communal roof terrace with panoramic views, secure bike cages, and zip car bays.

The development has undergone a significant overhaul in line with current legislation around ESW1 requirements which a new buyer will benefit from. The external aesthetics have been renewed and will have the feel of a brand new development. These works are due to be finished summer 2024. (Please note the external photos we have used are taken pre works)

This is one of the most sought-after positions within the development and early viewing is a must.

Seren Park Gardens is just moments away from Maze Hill Station, which has excellent transport links into the City of London, Canary Wharf, as well as London St Pancras. Greenwich Park is a few minutes walk. Walking south just 0.9 mile, you will arrive in Blackheath village which offers an array of boutique shops, bars and restaurants giving a genuine feeling of village life inside London. 0.4 miles to the west you will find the historic Greenwich town centre. Greenwich's covered market is one of London's best and attracts people from all over the capital. Finally, 0.5 miles to the east is Blackheath Standard, with daily conveniences including M&S Food Hall. The O2 arena is close by with the DLR, bus, riverboat, foot tunnel and cable car all within easy reach; and Canary Wharf, the City and central London are just minutes away via the Jubilee Line at North Greenwich (1.6 miles). Other amenities such as the Cinema, Ikea and other large stores can be found at Greenwich Peninsula which is a 4 minutes' drive.



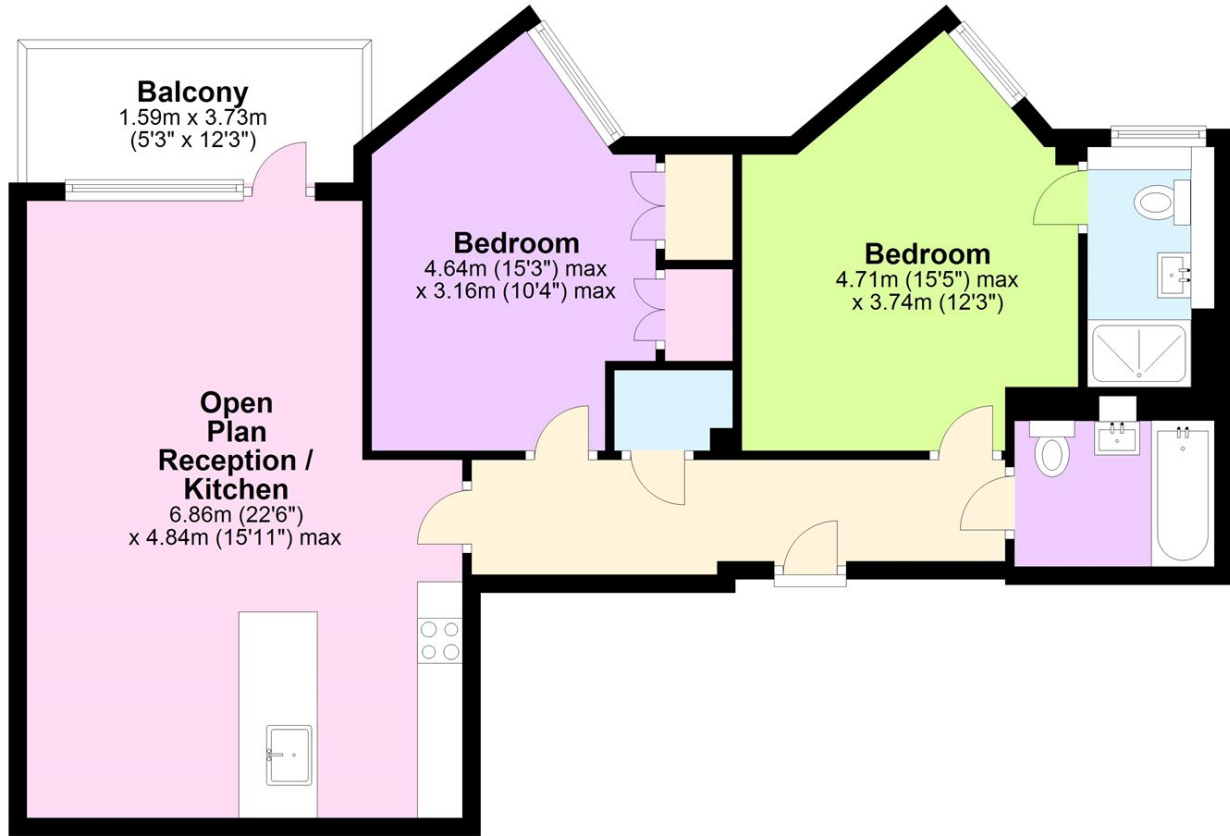






## Eighth Floor

Approx. 75.9 sq. metres (817.0 sq. feet)



Total area: approx. 75.9 sq. metres (817.0 sq. feet)

This floorplan is for illustration purposes only and is not to scale. The position and size of doors, windows, appliances and other features are approximate. Any lease and service charge details have been provided by the vendor. Any interest party should have these checked by a solicitor as part of the purchase process.

Energy Efficiency Rating		Current	Potential
Very energy efficient - lower running costs			
(92)	<b>A</b>		
(81-91)	<b>B</b>	84	84
(69-80)	<b>C</b>		
(55-68)	<b>D</b>		
(39-54)	<b>E</b>		
(21-38)	<b>F</b>		
(1-20)	<b>G</b>		
Not energy efficient - higher running costs			
England, Scotland & Wales		EU Directive 2002/91/EC	

Blackheath | 0208 8520999 | blackheath@winkworth.co.uk

**Winkworth**

[winkworth.co.uk](http://winkworth.co.uk)

See things differently

Winkworth wishes to inform prospective buyers and tenants that these particulars are a guide and act as information only. All our details are given in good faith and believed to be correct at the time of printing but they don't form part of an offer or contract. No Winkworth employee has authority to make or give any representation or warranty in relation to this property. All fixtures and fittings, whether fitted or not are deemed removable by the vendor unless stated otherwise and room sizes are measured between internal wall surfaces, including furnishings.