



HALLIFORD STREET, LONDON, N1
£575,000 SHARE OF FREEHOLD

A BEAUTIFUL ONE BEDROOM FLAT WITH ROOF TERRACE IN ISLINGTON

Islington | 0207 354 2480 | islington@winkworth.co.uk



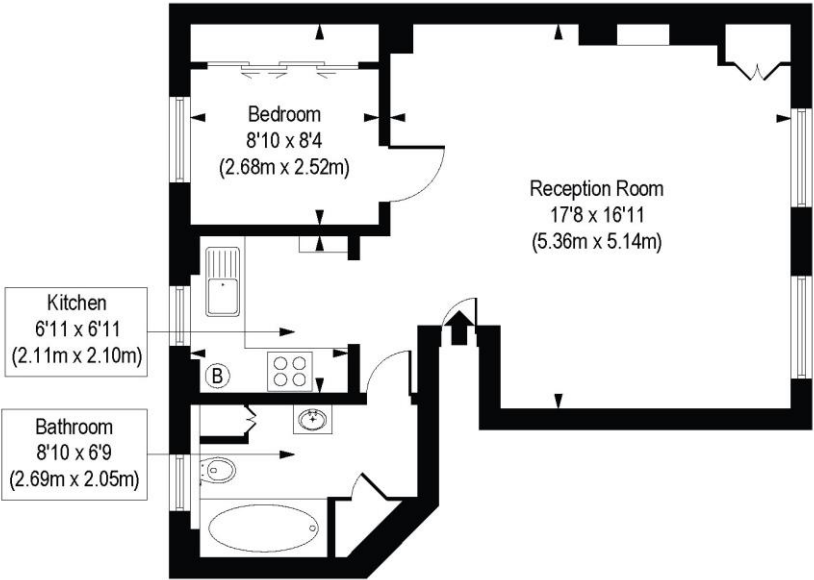
DESCRIPTION:

A lovely one bedroom flat on a quiet tree lined street in the heart of Islington. This property boasts a large reception room with separate kitchen, a modern bathroom, and a double bedroom with built in storage. It has a wood burning stove, wooden floors and also has access to a wonderful, shared roof terrace. The property further benefits from a share of the freehold and is offered to the market chain free.

Halliford Street is a residential street located between Essex Road and De Beauvoir and is within easy reach of the restaurants, bars and boutique shops on Upper Street. Transport to the City and Canary Wharf is easily facilitated by the overground services from Essex Road and various bus routes along New North Road, whilst the frequent buses on Essex Road provide easy access to the West End. Angel station offers the closest underground service on the Northern line whilst international transport is facilitated from St Pancras.



Halliford Street, N1
Approx. Gross Internal Floor Area 491 sq. ft / 45.61 sq. m



Second Floor

COMPLIANT WITH RICS CODE OF MEASURING PRACTICE. Floorplan is for illustrative purposes only and is not to scale. Every attempt has been made to ensure the accuracy of the floorplan shown, however all measurements, fixtures, fittings and data shown are an approximate interpretation for illustrative purposes only. Liability for errors, omissions or mis-statement through negligence or otherwise is hereby excluded.

This floorplan is for illustration purposes only and is not to scale. The position and size of doors, windows, appliances and other features are approximate.

