



OVERHILL ROAD, EAST DULWICH, SE22
OIEO £1,000,000 FREEHOLD

A VERY WELL-PRESENTED, SPACIOUS, FOUR-BEDROOM TERRACED FAMILY HOME SITUATED IN A POPULAR RESIDENTIAL LOCATION.

Dulwich | 020 8299 2722 | dulwich@winkworth.co.uk

Winkworth

winkworth.co.uk

See things differently

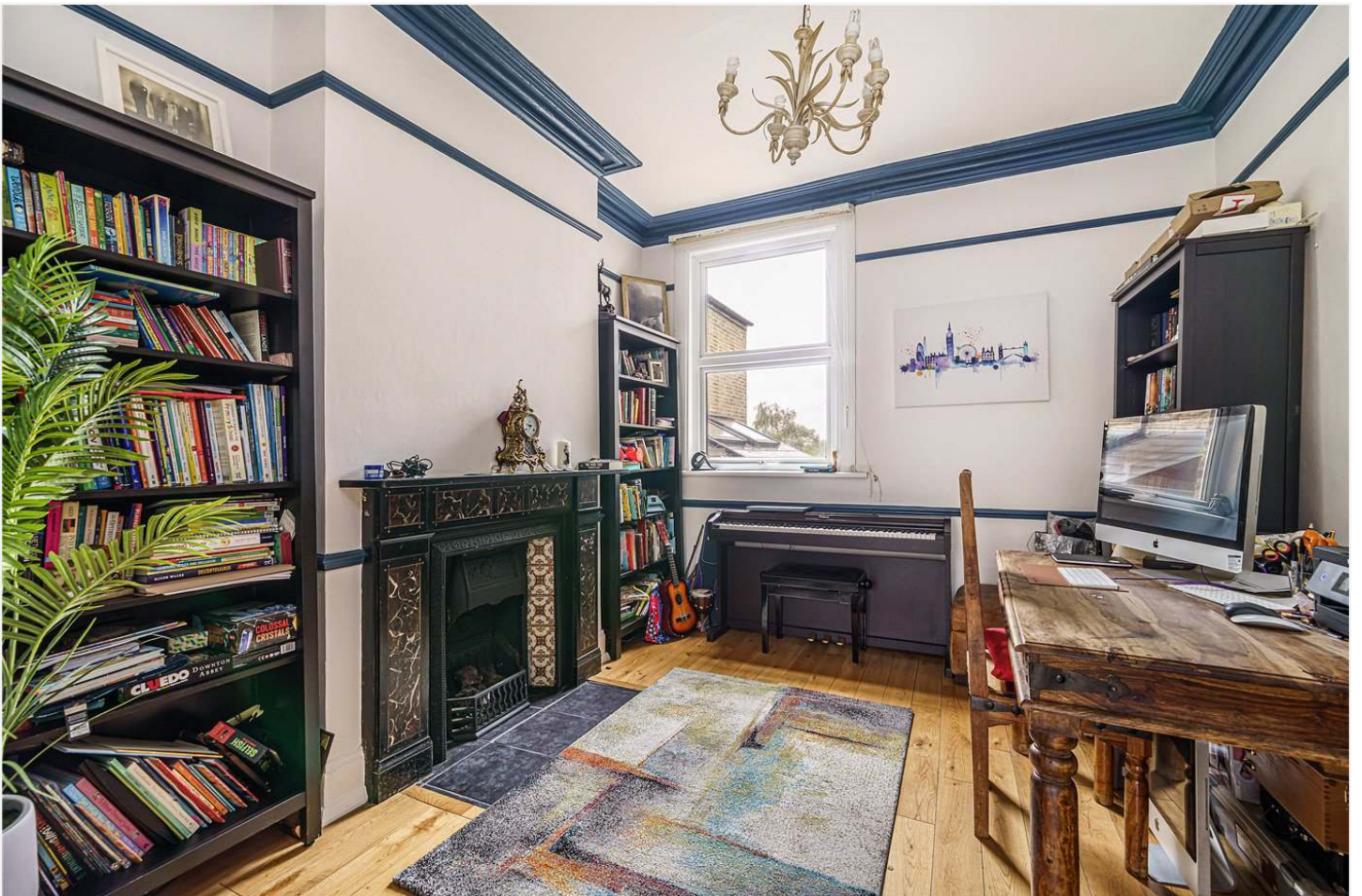


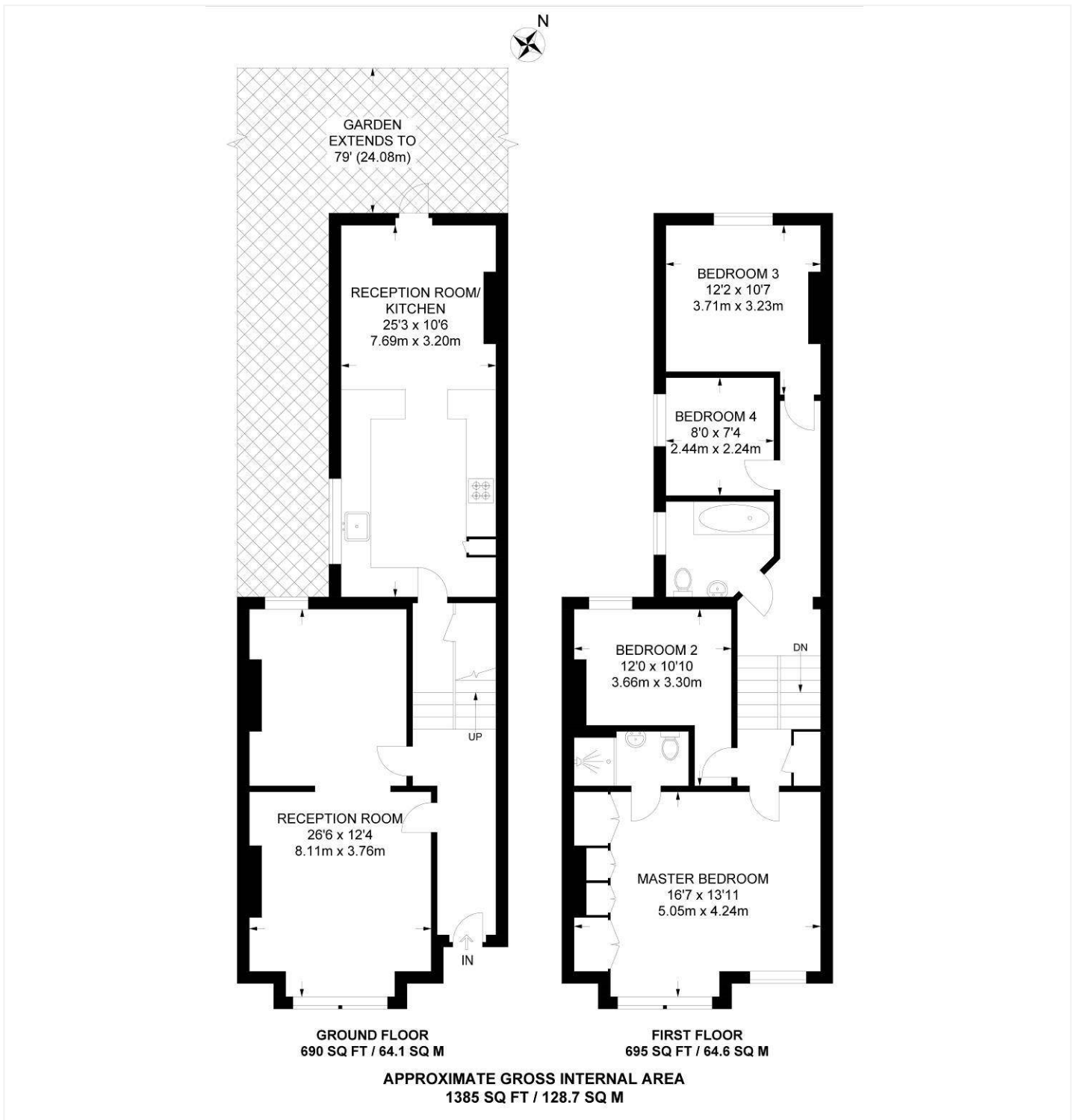
DESCRIPTION:

A large period home with arguably the best views of London. A very well-presented, spacious, four-bedroom terraced family home situated in a popular residential location in East Dulwich, within close proximity to Dulwich Village and the heart of Lordship Lane. The property offers a large double reception with original oak dividing doors and a family kitchen-diner with doors leading out to a large North/ West facing garden to the rear. The first floor comprises four well-proportioned bedrooms and a family bathroom, with a further en-suite situated in the master bedroom. The outdoor area boasts a large terrace with impeccable views across the ever-expanding London Skyline, furthermore incorporating a large lawned area. Further benefits include private off-street parking as well as the potential to extend into the loft and side return STPP. The location offers easy access to Lordship Lane with its impressive array of shops, bars, and restaurants. A short bus journey to Forest Hill gives access to the East London line, with further rail networks at West Dulwich and direct links to London Bridge from East Dulwich station.

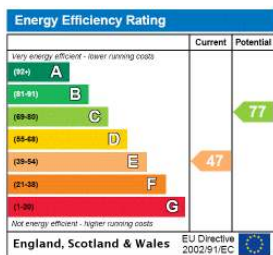
AT A GLANCE

- Four Bedrooms
- Victorian Terraced House
- Double Reception Room
- Kitchen-Diner
- Bathroom & Ensuite Shower Room
- North-West Facing Garden
- Freehold
- Potential to Extend into the Loft & Side Return STPP





This floorplan is for illustration purposes only and is not to scale. The position and size of doors, windows, appliances and other features are approximate.



Dulwich | 020 8299 2722 | dulwich@winkworth.co.uk



winkworth.co.uk

See things differently

Winkworth wishes to inform prospective buyers and tenants that these particulars are a guide and act as information only. All our details are given in good faith and believed to be correct at the time of printing but they don't form part of an offer or contract. No Winkworth employee has authority to make or give any representation or warranty in relation to this property. All fixtures and fittings, whether fitted or not are deemed removable by the vendor unless stated otherwise and room sizes are measured between internal wall surfaces, including furnishings.