



LAMBTON ROAD, SW20
£850,000 LEASEHOLD

Winkworth



LAMBTON ROAD, SW20

This modern two-bedroom purpose-built apartment features a bright and spacious open-plan kitchen and reception room, complete with tiled flooring, recessed lighting, and three Juliet balconies. The contemporary kitchen includes an island, a range of sleek gloss wall and base units with tiled splashback, white countertops, and integrated Siemens appliances.

The master bedroom boasts tiled flooring, recessed lighting, built-in wardrobes, and a stylish fully tiled en suite shower room with a modern three-piece suite. It also enjoys the added benefit of a private terrace, perfect for relaxing. The second bedroom is equally bright, offering tiled flooring, two Juliet balconies, recessed lighting, and built-in wardrobes.

The main bathroom is fully tiled and fitted with a contemporary three-piece suite, a walk-in shower, and modern fixtures. There is also an additional WC conveniently located in the hallway.

Further benefits include air conditioning, underfloor heating throughout, secure underground parking, and dedicated bike storage.

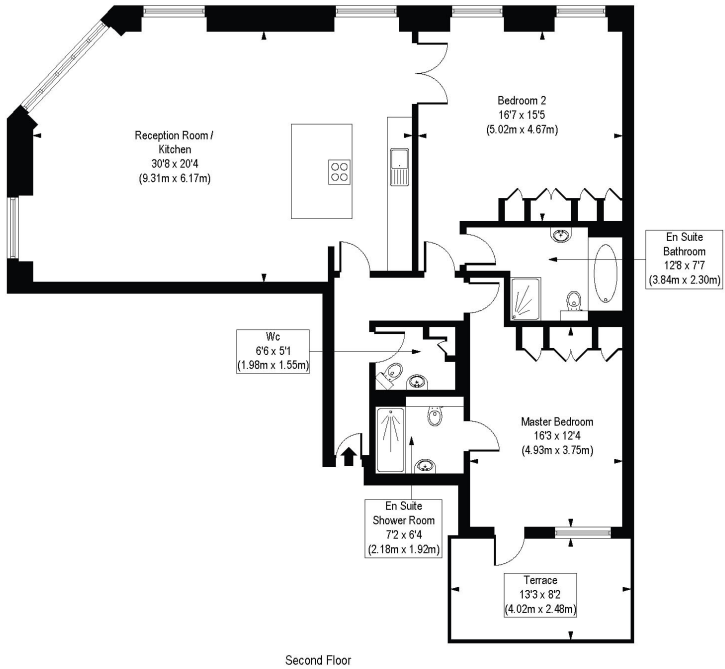
Lambton Road is located in the desirable Raynes Park area of the London Borough of Merton, close to Wimbledon. This leafy, well-connected neighbourhood offers an appealing mix of suburban tranquillity and city convenience, with a variety of shops, cafés, and restaurants nearby. Excellent transport links provide quick access into central London, while green spaces such as Wimbledon Common and Cannon Hill Common are within easy reach. The area is known for its strong community feel, attractive period and modern homes, and a selection of well-regarded schools, making it a sought-after location for both professionals and families. No onward chain.

Merton Council Tax Band: F





Lambton Road, SW20
Approx. Gross Internal Floor Area 1172 sq. ft / 128.25 sq. m



COMPLIANT WITH RICS CODE OF MEASURING PRACTICE. Floorplan is for illustrative purposes only and is not to scale. Every attempt has been made to ensure the accuracy of the floorplan shown, however all measurements, fixtures, fittings and data shown are an approximate interpretation for illustrative purposes only. Liability for errors, omissions or mis-statement through negligence or otherwise is hereby excluded.

Score	Energy rating	Current	Potential
92+	A		
81-91	B	84 B	84 B
69-80	C		
55-68	D		
39-54	E		
21-38	F		
1-20	G		

Tooting | 020 8767 5221 | tooting@winkworth.co.uk

winkworth.co.uk

Winkworth wishes to inform prospective buyers and tenants that these particulars are a guide and act as information only. All our details are given in good faith and believed to be correct at the time of printing but they don't form part of an offer or contract. No Winkworth employee has authority to make or give any representation or warranty in relation to this property. All fixtures and fittings, whether fitted or not are deemed removable by the vendor unless stated otherwise and room sizes are measured between internal wall surfaces, including furnishings.

