



HURLINGHAM COURT MANSIONS, LONDON, SW6

£850,000 SHARE OF FREEHOLD

A beautifully presented, first floor, two double bedroom flat in Parsons Green with fabulous views over Hurlingham Park.

Fulham & Parsons Green | 020 7731 3388 | fulham@winkworth.co.uk

Winkworth

for every step...

winkworth.co.uk



DESCRIPTION:

Spanning 741 sq. ft, the flat comprises a spacious reception room, two double bedrooms, a bathroom and an eat-in kitchen. The property also benefits from a lock up shed which is very useful for bikes and storage.

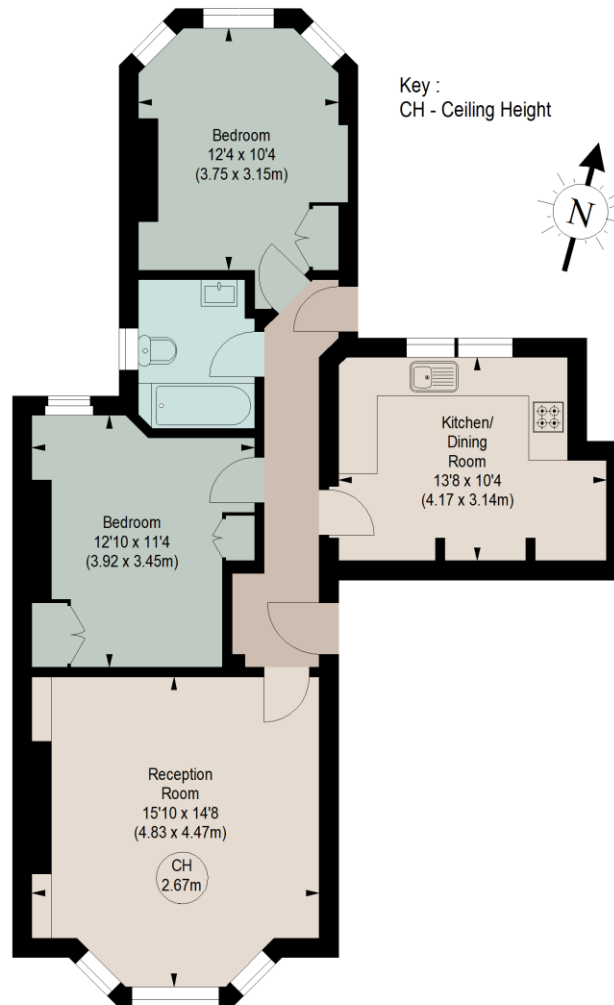
Hurlingham Court Mansions is one of the best maintained mansion blocks in Fulham. Located on the corner of Hurlingham Road and Linver Road, the flat overlooks Hurlingham Park, close to Parsons Green underground station and the shops and restaurants along New Kings Road from where the 22 bus takes you up to Sloane Square.





HURLINGHAM COURT MANSIONS, SW6

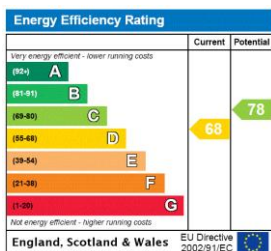
Approximate gross internal area
741 sq ft / 68.84 sq m



FIRST FLOOR

The floor plan is not to scale and measurements and areas shown are approximate and therefore should be used for illustrative purposes only. The plan has been prepared in accordance with the RICS code of Measuring Practice and whilst we have confidence in the information produced, it must not be relied on. If there is any aspect of particular importance, you should carry out or commission your own inspection of the property.

This floorplan is for illustration purposes only and is not to scale. The position and size of doors, windows, appliances and other features are approximate.



Tenure: Share of Freehold

Term: 0 year and 0 months

Service Charge: £0 per annum

Ground Rent: £ 0 Annually (subject to increase)

Council Tax Band: E

Where no figures are shown, we have been unable to ascertain the information. All figures that are shown were correct at the time of printing.

Winkworth

Fulham & Parsons Green | 020 7731 3388 | fulham@winkworth.co.uk

for every step...

winkworth.co.uk

Winkworth wishes to inform prospective buyers and tenants that these particulars are a guide and act as information only. All our details are given in good faith and believed to be correct at the time of printing but they don't form part of an offer or contract. No Winkworth employee has authority to make or give any representation or warranty in relation to this property. All fixtures and fittings, whether fitted or not are deemed removable by the vendor unless stated otherwise and room sizes are measured between internal wall surfaces, including furnishings.