



27 FIR AVENUE, BOURNE, PE10 9RY
£375,000 FREEHOLD

Winkworth



27 FIR AVENUE, BOURNE, PE10 9RY

Offered for sale with no ongoing chain this impressive four bedroom detached bungalow offers huge potential and is set on a large plot with space to extend (STPP) Located in a highly sought after location giving easy access to Bourne woods and the town centre the property offers excellent accommodation benefiting from, lounge, family room and dining room, kitchen with utility porch off, master bedroom with bay window overlooking the garden, three further bedroom and wet room with separate WC. Outside there is a generous driveway providing ample off road parking which leads to a single garage with space to convert to a double garage (STPP) The property sits on a generous plot with established trees and shrubs and well maintained lawned garden with gate giving access to West Road. Please call 01778 392807 for more information.

ENTRANCE HALL

LOUNGE 19'4" X 12'2"

FAMILY ROOM 10'6" X 9'0"

DINING ROOM 12'0" X 9'0"

KITCHEN 13'2" X 9'0"

UTILITY/PORCH 9'0" X 5'1"

BEDROOM ONE 12'9" X 12'2"

BEDROOM TWO 11'7" X 8'8"

BEDROOM THREE 10'9" X 8'8"

BEDROOM FOUR 9'7" X 9'2"

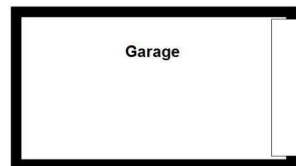
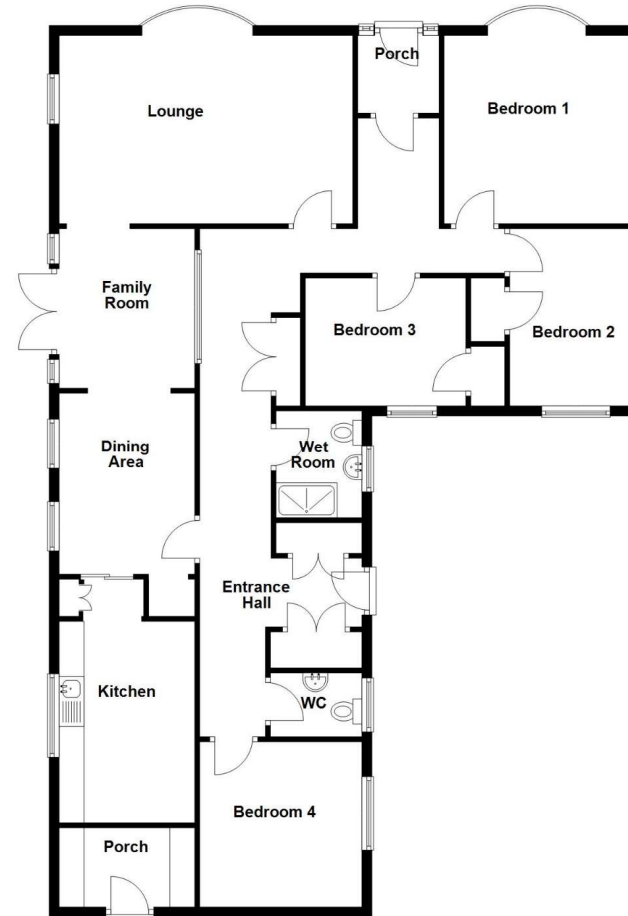
WETROOM 7'5" X 5'7"

SEPARATE WC





Ground Floor
Approx. 163.7 sq. metres (1761.6 sq. feet)



Total area: approx. 163.7 sq. metres (1761.6 sq. feet)

Bourne | 01778392807 | bourne@winkworth.co.uk

winkworth.co.uk

Winkworth wishes to inform prospective buyers and tenants that these particulars are a guide and act as information only. All our details are given in good faith and believed to be correct at the time of printing but they don't form part of an offer or contract. No Winkworth employee has authority to make or give any representation or warranty in relation to this property. All fixtures and fittings, whether fitted or not are deemed removable by the vendor unless stated otherwise and room sizes are measured between internal wall surfaces, including furnishings.

Winkworth